

CMS Installation & Usage Guide

1.1 CMS Installation

System Requirement:

Intel Pentium 4 processor or equivalent.

Microsoft Windows Vista、Windows XP、Windows 2003 Server.

512MB memory above.

20MB HD space. Recording and image capturing require extra space for storage.

Installation Guide:

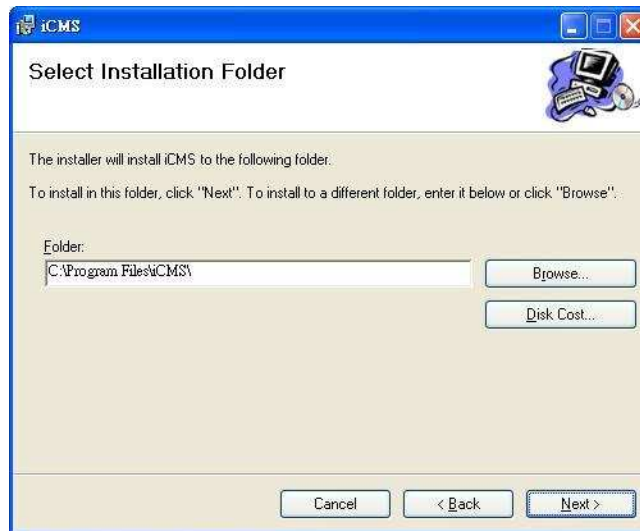
Step 1 : Install the CD that is packed with the DVR and download the CMS software.

Step 2 : Decompress and execute “**setup.exe**”.

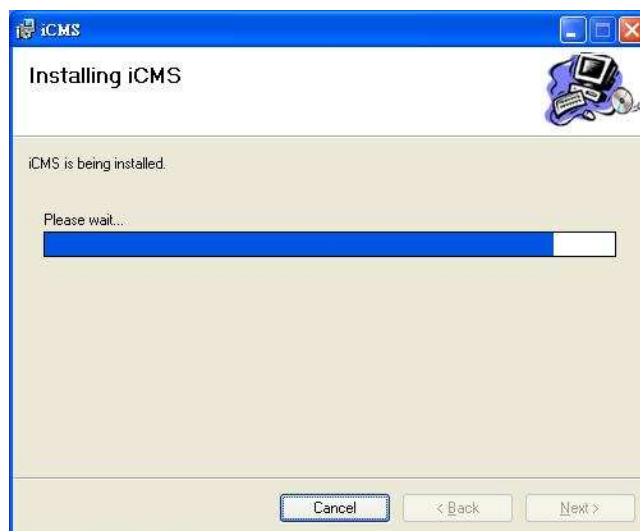
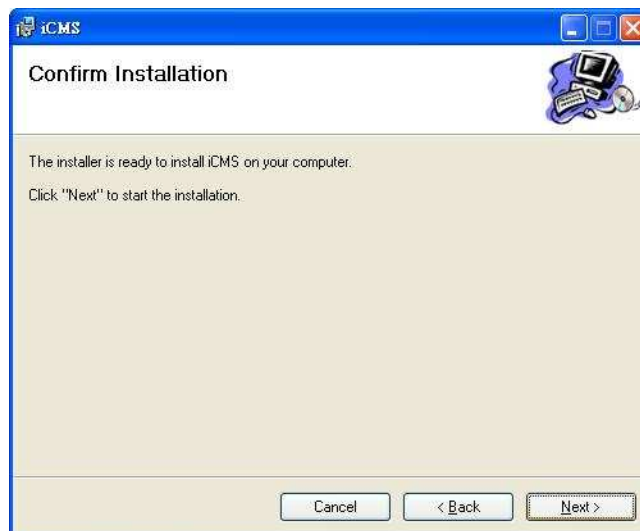
Step 3 : Select “**Next**”



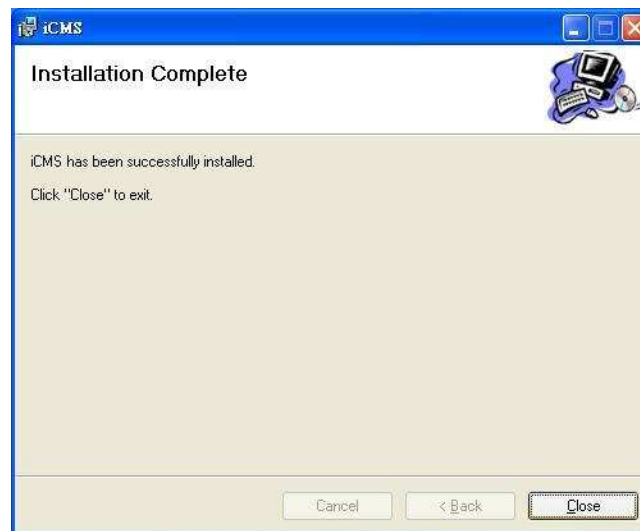
Step 4 : Select **"Browse"** to change installation path if needed. To check available space on hard disk, please select **"Disk Cost"** then please select **"Next"** to the next step.



Step 5 : "Confirm Installation" window shows. Select **'Next'** then the installation starts.



Step 6 : Select '**Close**' to finish installation when the "**Installation Complete**" window shows.

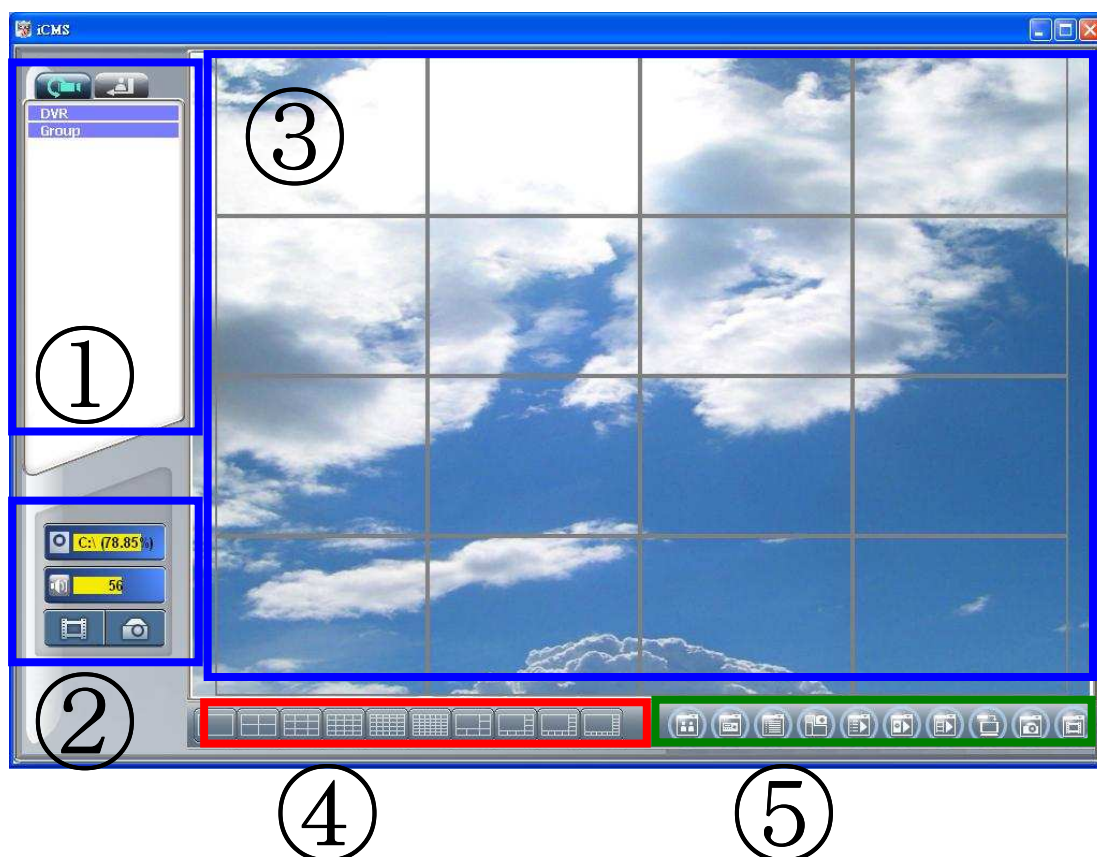


1.2 CMS Login and Environment

To enter CMS, the administrator's user name and password are required. The defaults are 'admin' and '123456'.





After successful login, the following image is shown on your screen:



① DVRs, Groups & Events	Information about DVRs, groups and events. See “1.3 Groups & Events” for more details.
② PC information and control	Information about local PC’s hard disk, volume, recording...etc. See “1-6 Local PC Information and Control” for more details.
③ Main Display	Live image display area. See “1.7 Main Display” for more details.
④ Display Modes	Several choices of display modes supported by CMS.
⑤ Operation Bar	A set of 10 operations are provided by CMS. See “1.11 Operation Bar” for more details.

1.3 Groups & Events

Icon	Description
	View list of logged in DVR / Group.
	View Logs : DVR event information list.




1.4 View DVR/ Group List

Single left click on 'DVR' or 'Group' will expand/ shrink the entire DVRs and groups list.

On the DVR list, double left click on a connected DVR will show its image in the main display. See "1.13 User Administration" for further information.

On the Group list, double left click on a group will show live image from the channels of the group in the main display. See "1.14 Group Administration" for further information.

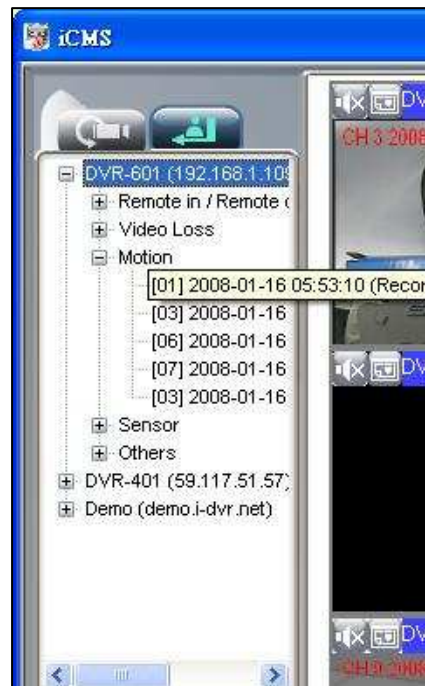


Icon	Description
	Video Loss
	Motion
	Sensor







1.5 Event View

This window lists all the events recorded on the DVR. Each DVR has a list of different categories of events. According to Remote in/ Remote out, Video Loss, Motion, Sensor, and Other (Power Reset, Key lock, Key unlock, HD Full) .



1.6 Local PC Information and Control

Located on the left lower corner of the screen, please see the chart below:

Icon	Function	Description
	HDD info	Shows the ratio of available space / HDD capacity of C:\ drive (where CMS is installed).
	Volume	PC volume or playback volume control bar.
	Recording	Record live image to local PC storage. To view locally stored data, use "Record" under the operation bar. Also see "1.21 Recording data" for detail.
	Snapshot	Take snapshot to save in local PC storage. To view all the snapshots you've taken; please go to "Snapshot" under the operation bar. See "1.20Snapshot data" for detail.



1.7 Main Display

The main display area is where the live image of DVR is shown. You can drag to change the location of the screen for each channel and turn On/ Off audio signal by clicking the mouse.

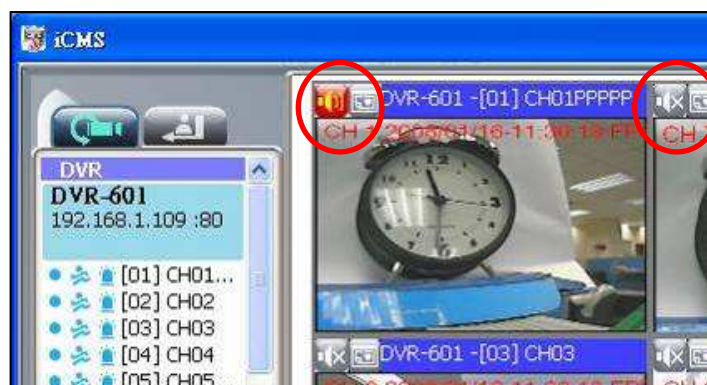


1.8 Audio Control


In live mode, you can turn On/ Off the audio signal of Ch1~Ch4 (4CH DVR supports only 1Channel audio recording):

- 「」 Audio signal is On
- 「」 Audio signal is Off

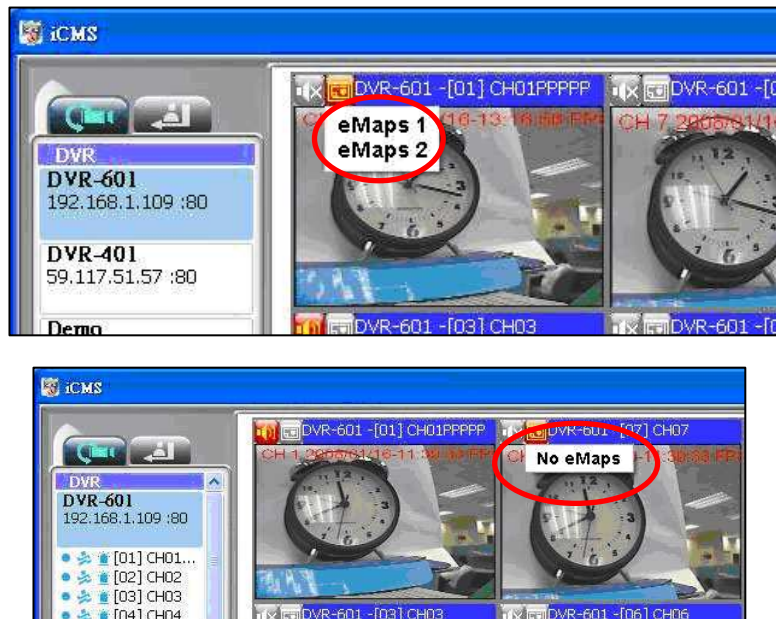
Turn On/ Off by clicking on the graphical icon, please note that each time only one audio signal channel is allow turned on.



1.9 eMaps Setup







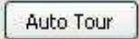

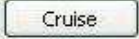

In LIVE view, press 「」 to show eMap window. If a channel has e-Map settings added, a drop-down menu will appear showing the related e-Map names added in this channel. The channel that has not been added with any e-Map settings will have "No eMaps" shown on the screen.

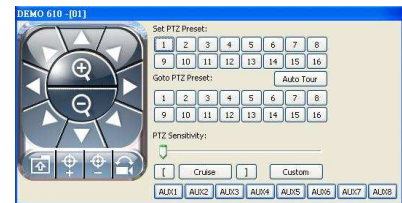
For more information about e-Map setup, please refer to “1.15 eMap Setup” .



1.10 PTZ Control

Right mouse click on the screen, PTZ control icon will appear, as shown below:





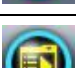





Icon	Description
8 Directional Button	PTZ Movement
	ZOOM+ : Zoom In
	ZOOM- : Zoom Out
	Preserved Function
	FOCUS+ : Focus Near
	FOCUS- : Focus Far
	Preserved Function
Set PTZ Preset	16 PTZ Preset Points
Goto PTZ Preset	16 PTZ Goto Preset Points
	Activate Auto Tour
PTZ Sensitivity	PTZ Sensitivity Setup
	Set the start and the end point of Cruise function
	Activate Cruise Mode
	Preserved Function
AUX 1~8(Customize)	AUTO+1 - AUTO+8



1.11 Operation Bar



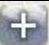

10 Operations listed as below:

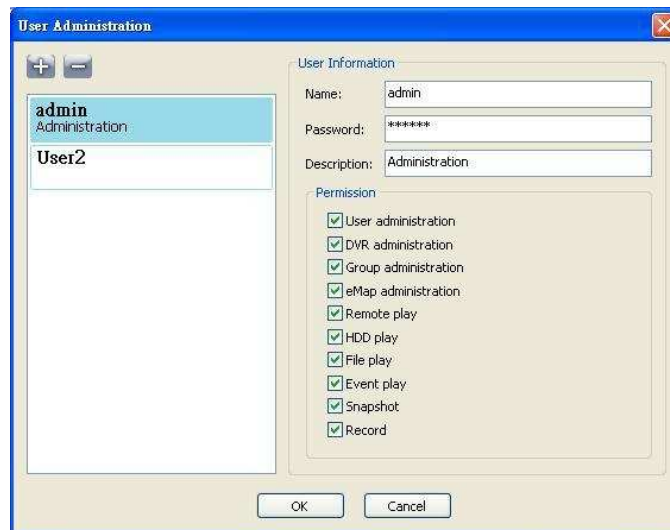
Icon	Description
	User Administration. Please see 「1.12 User administration」
	DVR Administration. Please see 「1.13 DVR Administration」
	Group Administration. Please see 「1.14 Group Administration」
	eMap Administration. Please see 「1.15 eMap Setup」
	Remote Playback. Please see 「1.16 Remote-Site Playback」
	HDD Playback. Please see 「1.17 HDD Playback」
	File Playback. Please see 「1.18 File Playback」
	Event Playback. Please see 「1.19 Event Playback」
	Snapshot Data. Please see 「1.20 Snapshot Data」
	Recording Data. Please see 「1.21 Recording Data」

1.12 User administration

Before the CMS can be used on a PC, user accounts should be added with proper authority. Each user should be assigned with a password and optionally a description. If a user does not have certain authority assigned, he/ she will not be able to operate the corresponding function on the Operation Bar. The default is none of the authority assigned. The administrator should assign proper authority to each user. These user accounts can be deleted or edited later on.

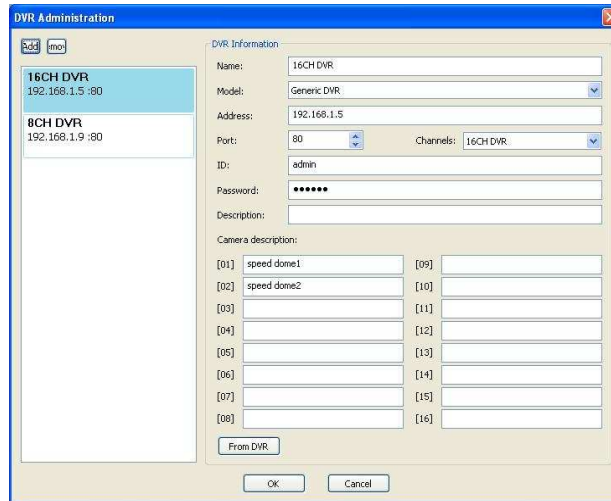
Select “**OK**” to save the setup.

Icon	Description
	Add a user account. The default authority has none permission.
	Delete a user account.



1.13 DVR Connection Information Setup

You can add or delete the DVR connection, information and description editing, also enter names of the channels (Please select Generic DVR for DVR Model). After setup, please click "OK" to store setup.



1.14 Group Administration

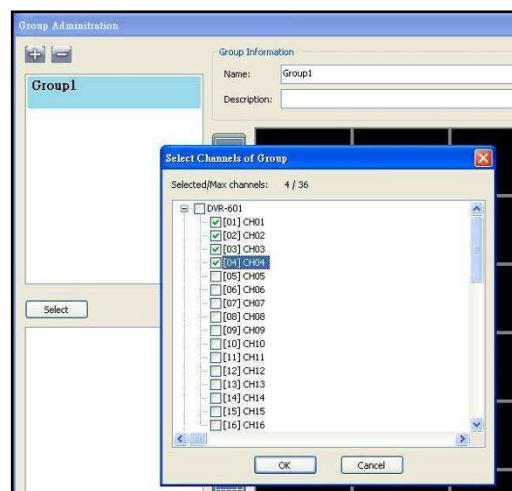
A 'Group' means a set of video channels from one or many DVRs, which means, user can organize channels from different DVRs to be set in a group. This function allows you to monitor and manage channels from multiple DVRs easily and flexibly.

Steps:

Step 1 : Add a new group and set its name and description.

Step 2 : Click '**Select**' which will bring up a new window.

Step 3 : Check the specific channels that you'd like them to be included in the group. To include all channels of a DVR, just ☐ check the DVR.



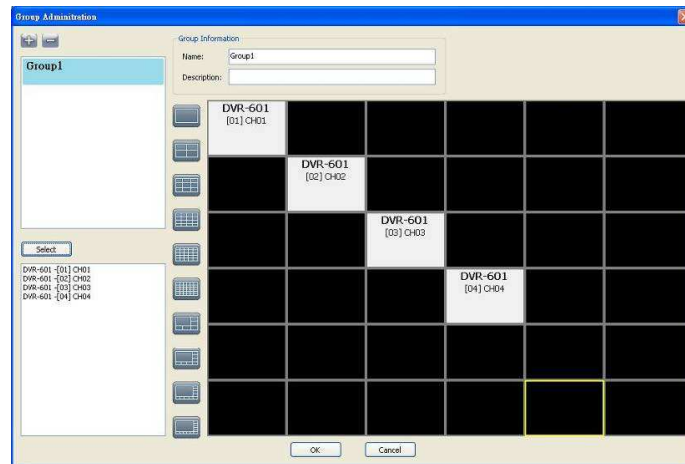
Step 4 : Click "OK" to return to the previous window.

Step 5 : Select a display mode, system will auto select.

Step 6 : Drag a channel from the lower left panel into the main display to a preferred location. Or, change the channel location in the main display by mouse dragging.

Step 7 : You can 'Select' again to add other channels, but the un-saved channel locations will be lost.


Step 8 : Click "OK" to save the setup.

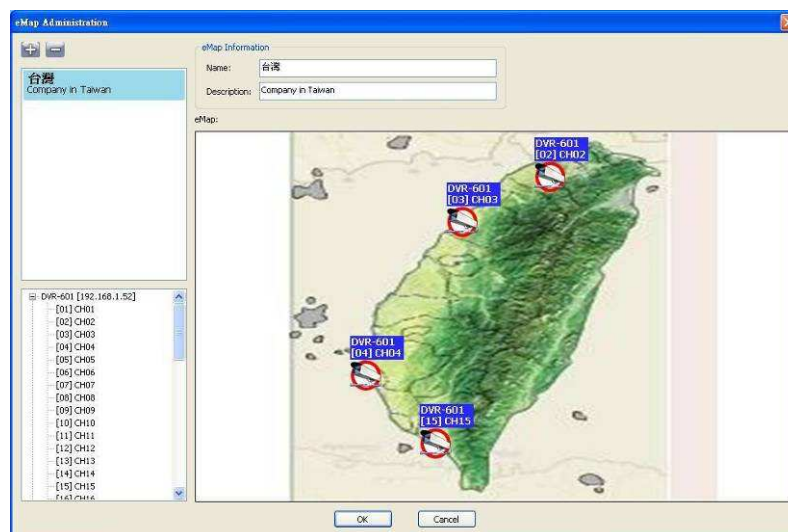


1.15 eMap Setup

If the DVR has the sub-region, or would like to have a picture on the background to monitor the channel, you can use the eMap.

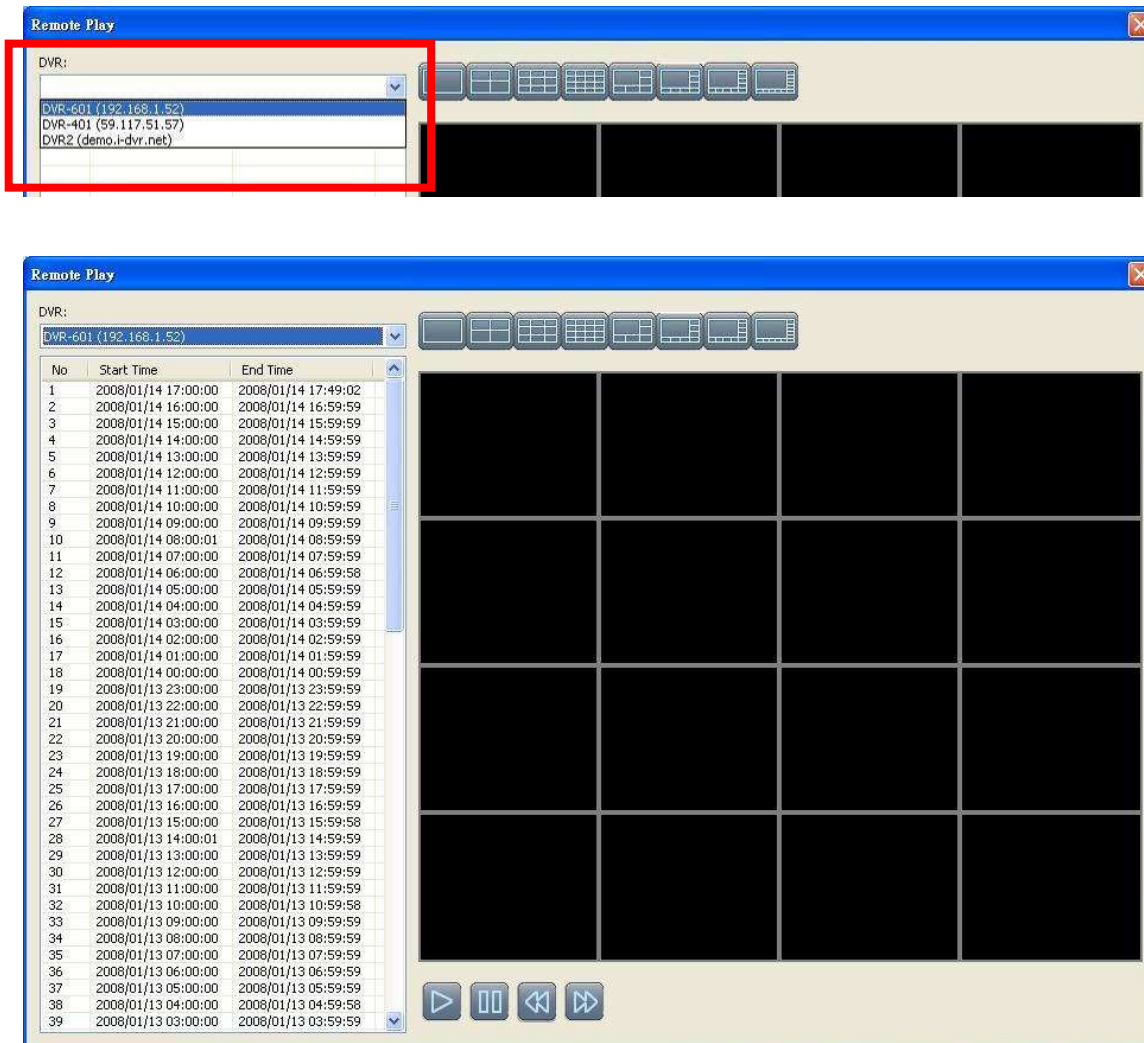
Steps:






1. Click [] icon to select a path of the window picture.
2. Click [OK] button after selecting a picture, a window will show on the right picture content.
3. Use left mouse button to drag to any location.
4. To delete a channel, please right-mouse click on the channel icon (CH1-CH16), and select item option "Remove".
5. Click [OK] button after setup has been completed to store setup.



1.16 Remote-Site Playback

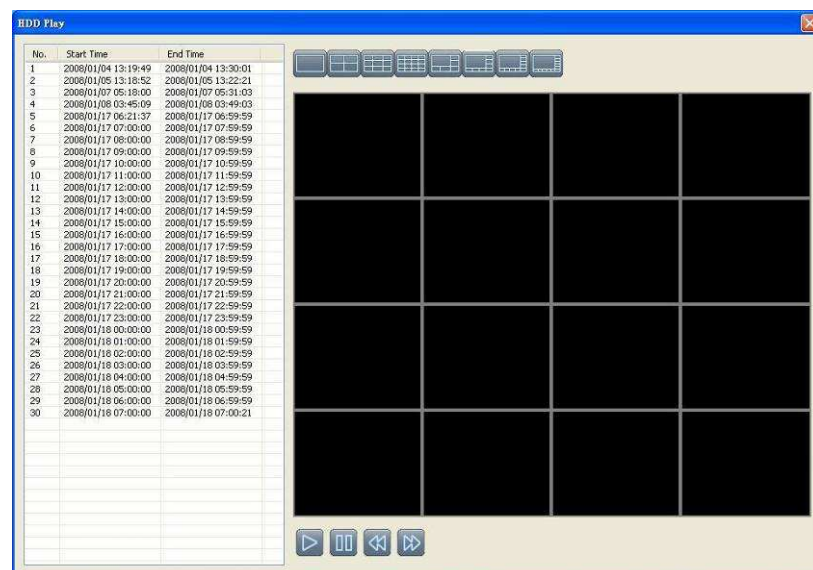
You can playback recorded images of the DVR on the remote-site. First select a DVR, DVR recording information list appears below, double-click to playback selected video time period, a video information screen will appear on the right. There are different split-screen options to select from, as shown below.



Icon	Description
	Start Playback.
	Pause.
	Stop playback.
	Fast forward.
	Fast rewind.

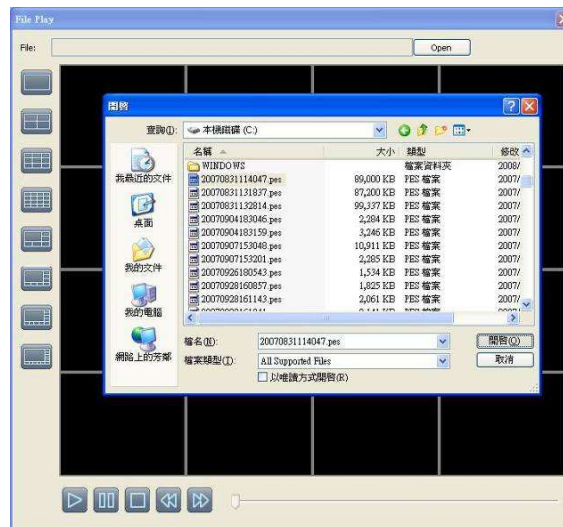
1.17 HDD Playback






You can directly play the recording data in the HDD that's uninstalled from DVR by CMS. See the picture below, the left part of the screen shows the recording data in a list form that's separated by hour and the right part is the main display. You can change the display modes and play files fast forward or rewind.



1.18 File Playback

You can play the recorded .irf files by “File Play” in CMS. It allows you to change the display mode, forward or rewind the file and drag the time bar.



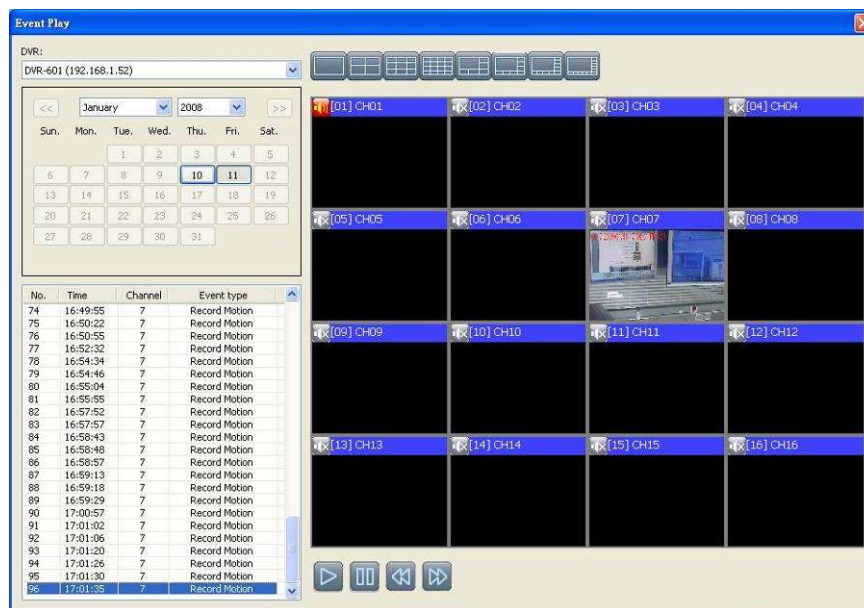
Icon	Description
	Start Playback.
	Pause.
	Stop playback.
	Fast forward.
	Fast rewind.

1.19 Event Playback

You can play the event recorded by the DVR.

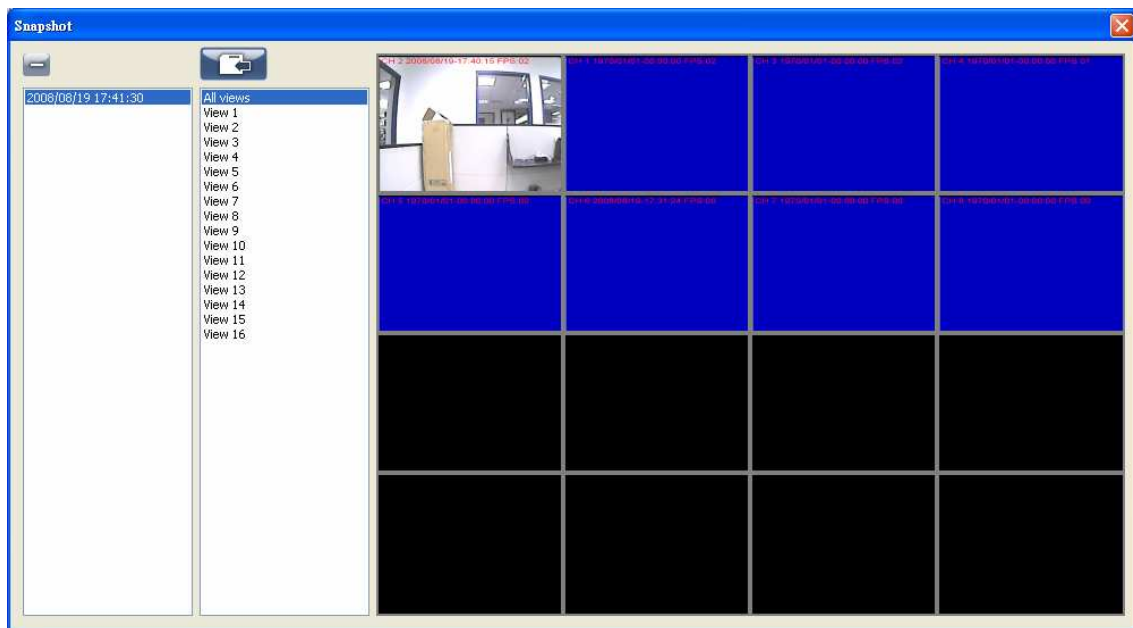
Steps:

1. Select DVR.
2. Select date.
3. Double-click on the selected “Event type” (table on the left hand side, bottom row), video will be shown on the right side of the screen.
4. Select split-screen.
5. Use the 4 icon functions on the bottom of the screen to operate video playback.



1.20 Snapshot Data

It can display all the snapshots you've taken, into "Snapshot Data". You can review, delete or save as other files.



1.21 Recording Data

It can play all the recording files you've recorded, into "Recording Data". You can play or delete them.

Steps:

Step 1 : Choose the recording time at upper left corner, it will be played on the main display.

Step 2 : You can choose the display mode.

Step 3 : Time bar will be shown on the right lower corner, please drag the time bar to specify the recording time you'd like to play.

