



# TIVE

## Android Mobile Viewer Illustration





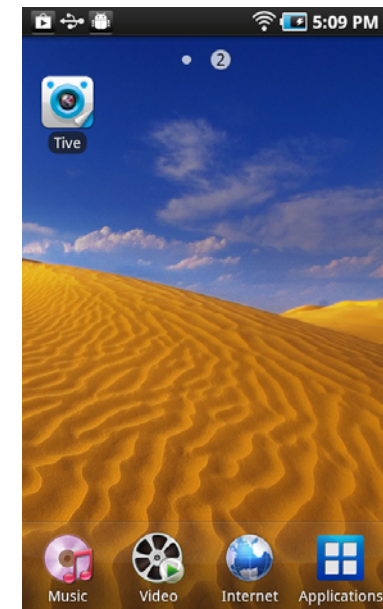
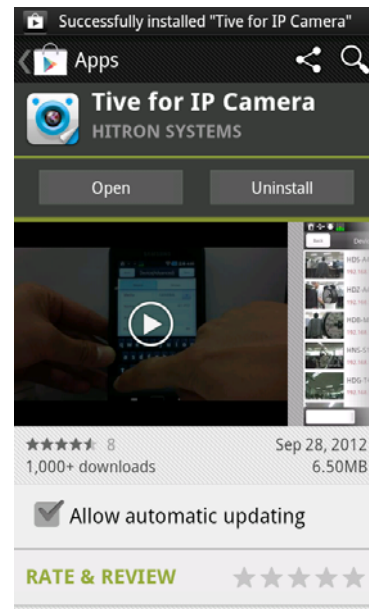
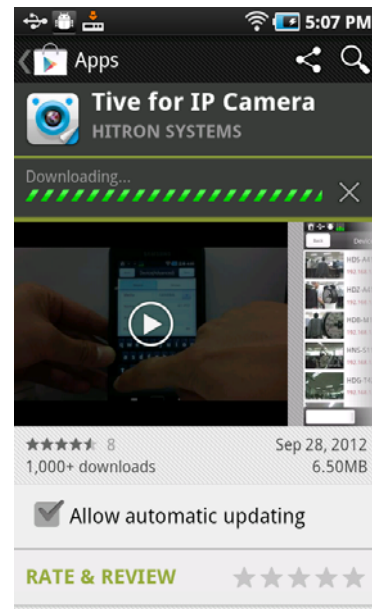
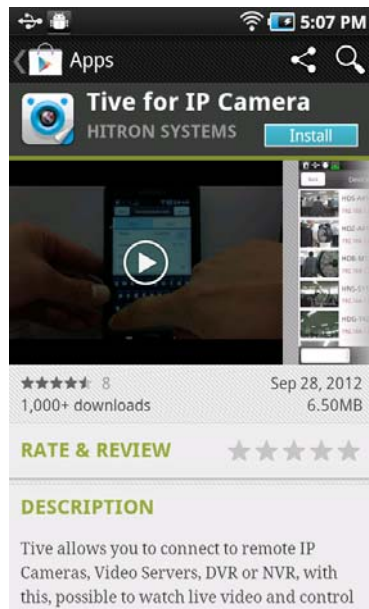
---

TIVE Android Mobile version 1.1.2

Manual version 1.2

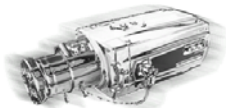


## Installation





## First Display

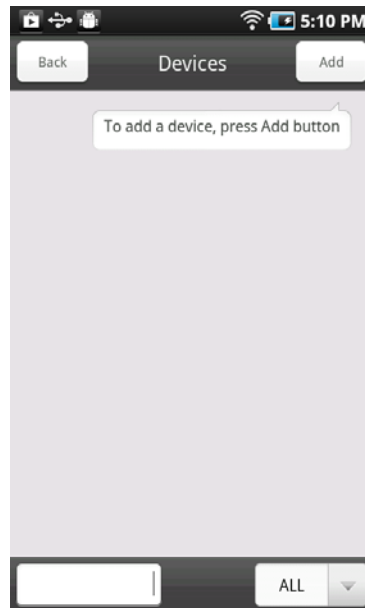


Start !!

Setup

About

=> Push Start



Devices can be registered here

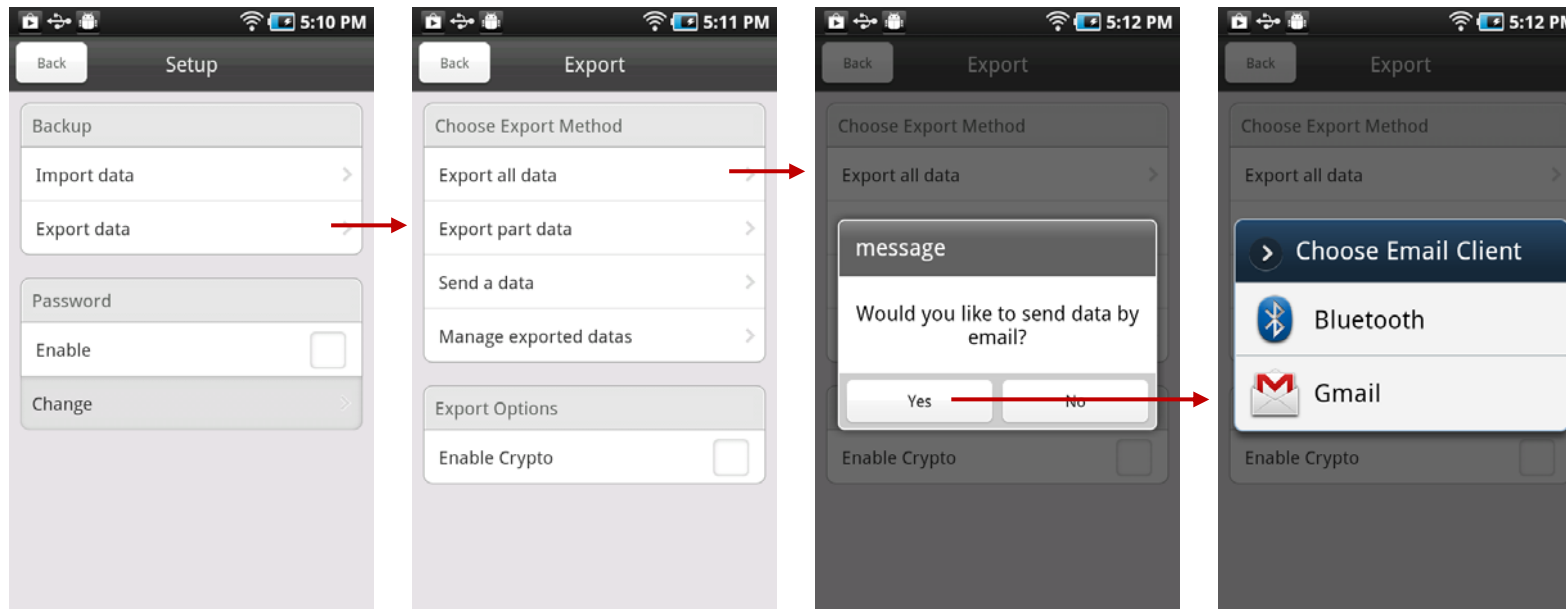


## Setup

### Export

#### (1) Export all data

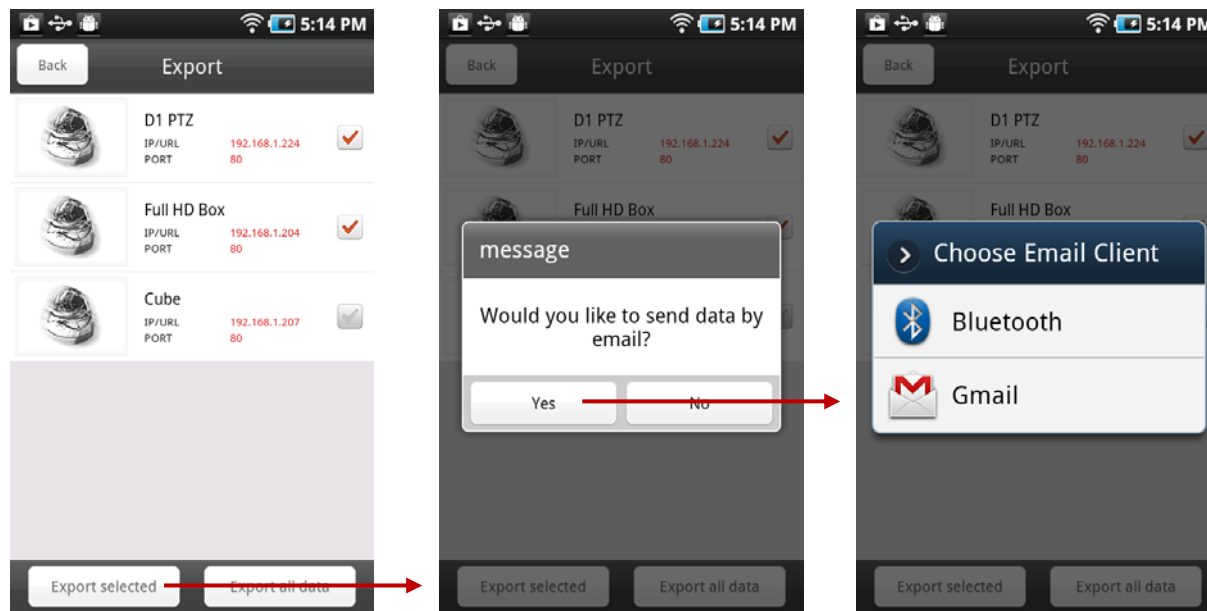
All the registered Network Devices' data can be exported to the selected e-mail address, and the exported data is automatically saved in the mobile storage.





## (2) Export part data

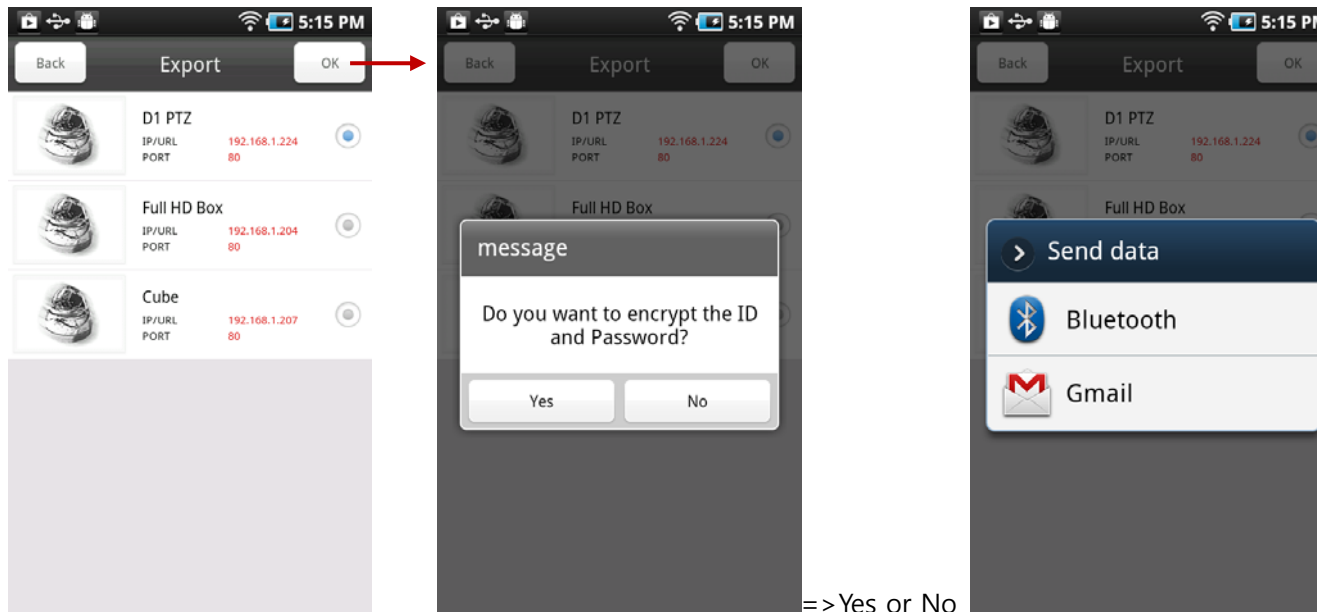
Selected Network Devices' data out of all the registered Network Devices can be exported to the selected e-mail address, and the exported data is automatically saved in the mobile storage.





### (3) Send a data

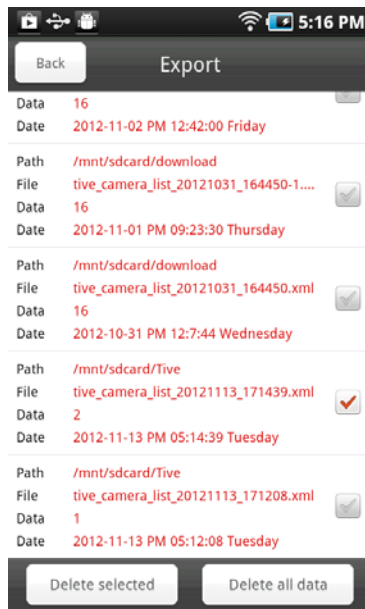
Selected Network Devices data out of all the registered Network Devices can be sent by Text to a selected e-mail address





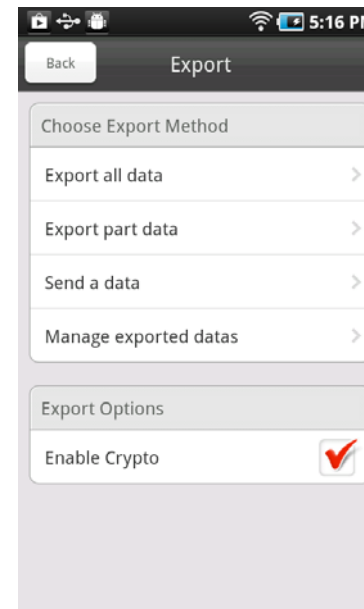
## (4) Manage exported datas

The exported Network Device Data can be deleted selectively.



## (5) Enable Crypto

Encryption can be enabled for the Exported data.



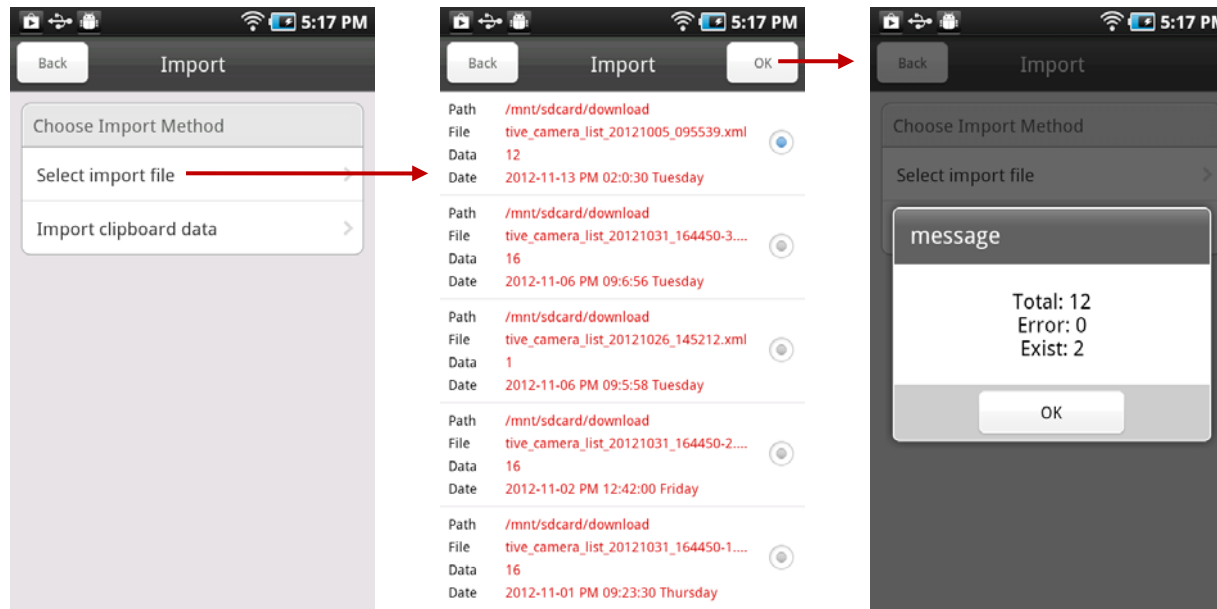




## Import

### (1) 'Select import file

The exported data that has been saved in the mobile storage can be imported to the TIVE.



### (2) Import clipboard data

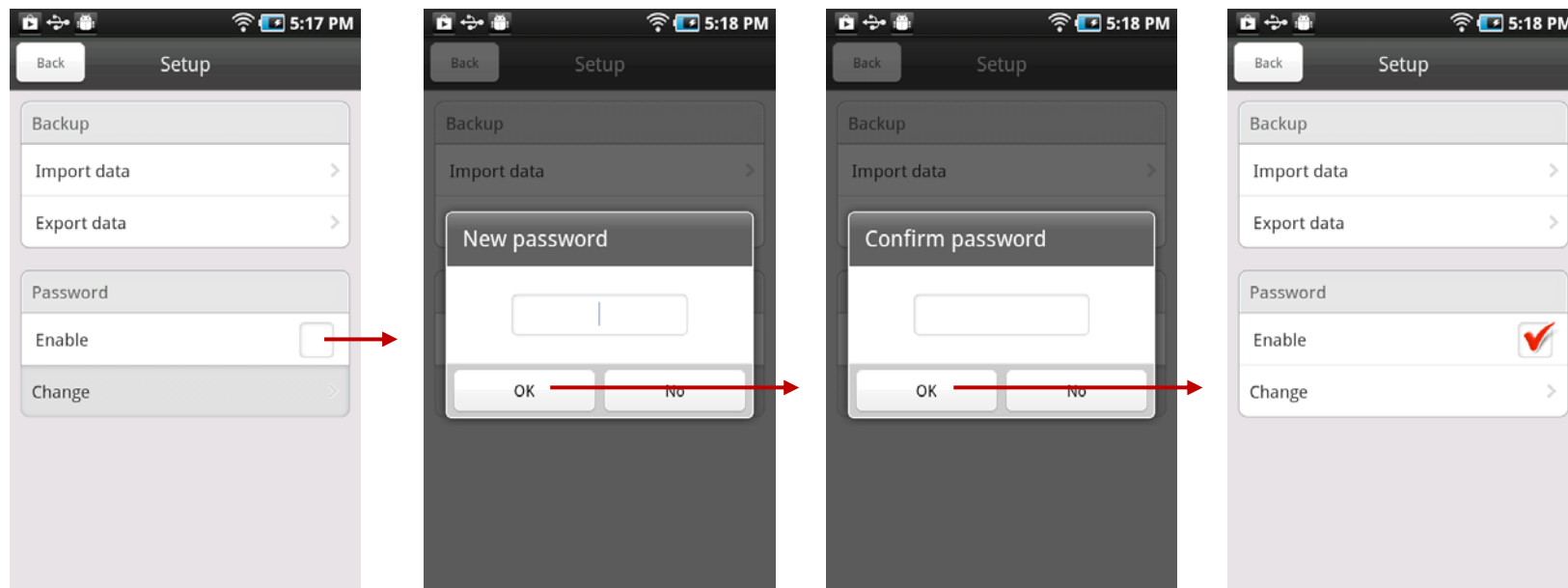
The Network Device data saved in the Clipboard is to be imported.



## Password

Password can be set up for execution of the TIVE.

(1) Enable

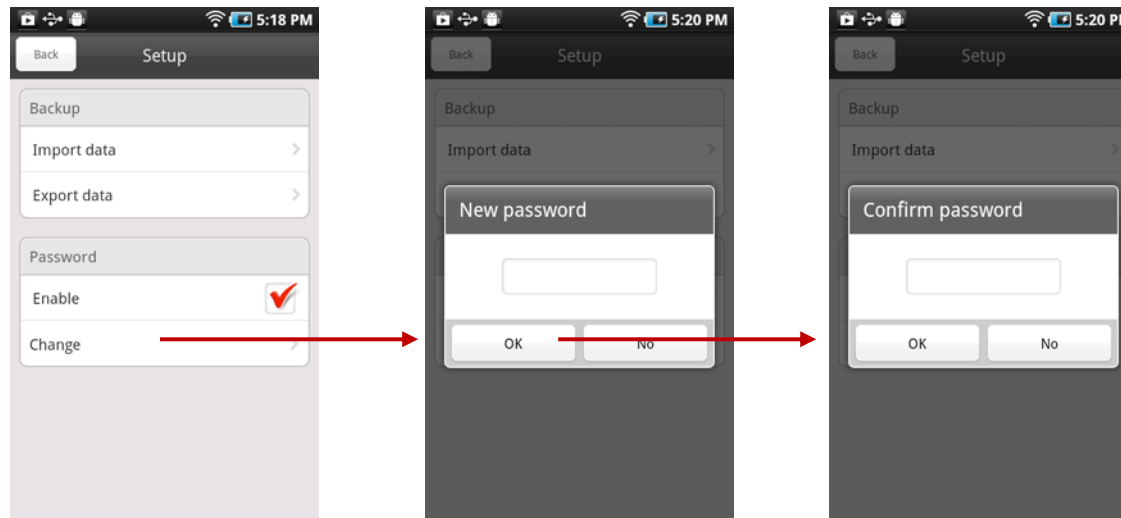


If password is set up, the check mark is displayed in the Enable menu as like above last image.

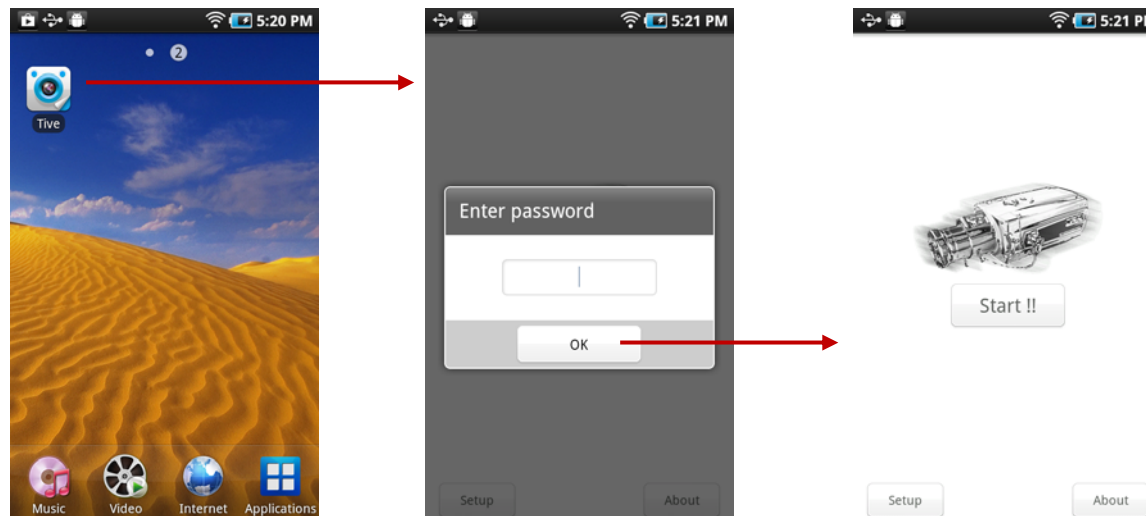


## (2) Change

The existing/current password can be changed.



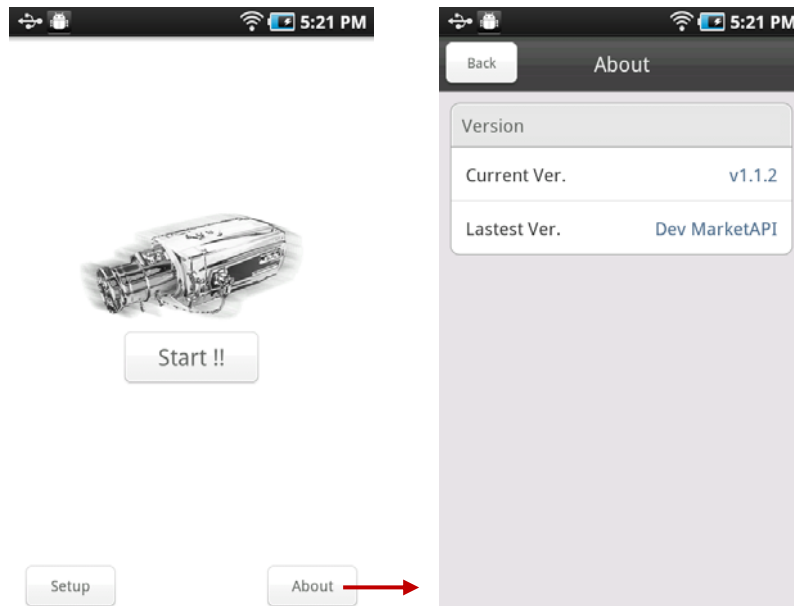
## (3) Execute TIVE after setting up password





## About

The current TIVE version can be checked

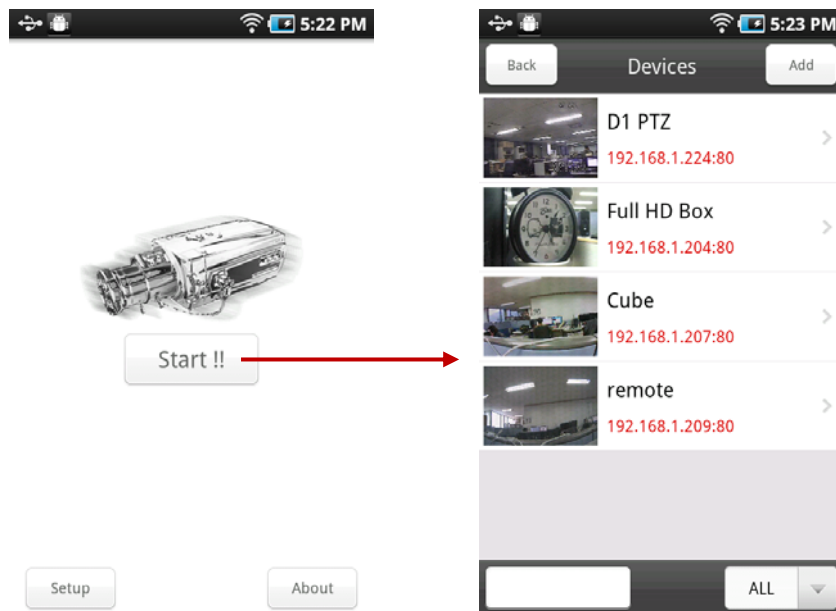




## Devices

Registered Devices and Group data is displayed.

- Main functions
  - Add / Edit / Delete Network Devices and Group
  - Real time video display and Audio
  - Control Network devices
  - Search and Playback video & Audio recorded in the Network devices





## Device Management

### Device List

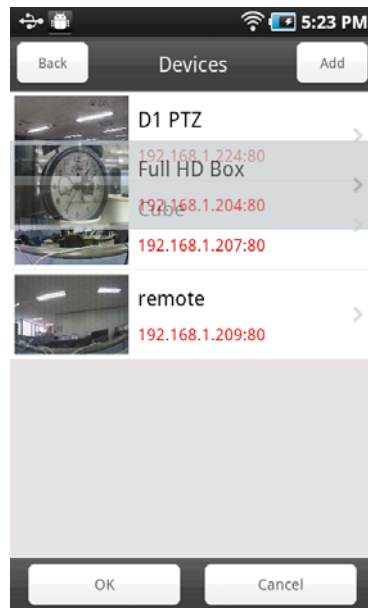
Display Network Device and Group information

- Network Device : Thumbnail image, Device name, IP Address & Port
- Group : Thumbnail image, Group name, Max camera number

(Thumbnail: the last still image of real time video)

### Change Device List

Keep touching Device for 2~3 seconds and move up and down the list by dragging it to the desired location in the list, and push OK to save the changed list.



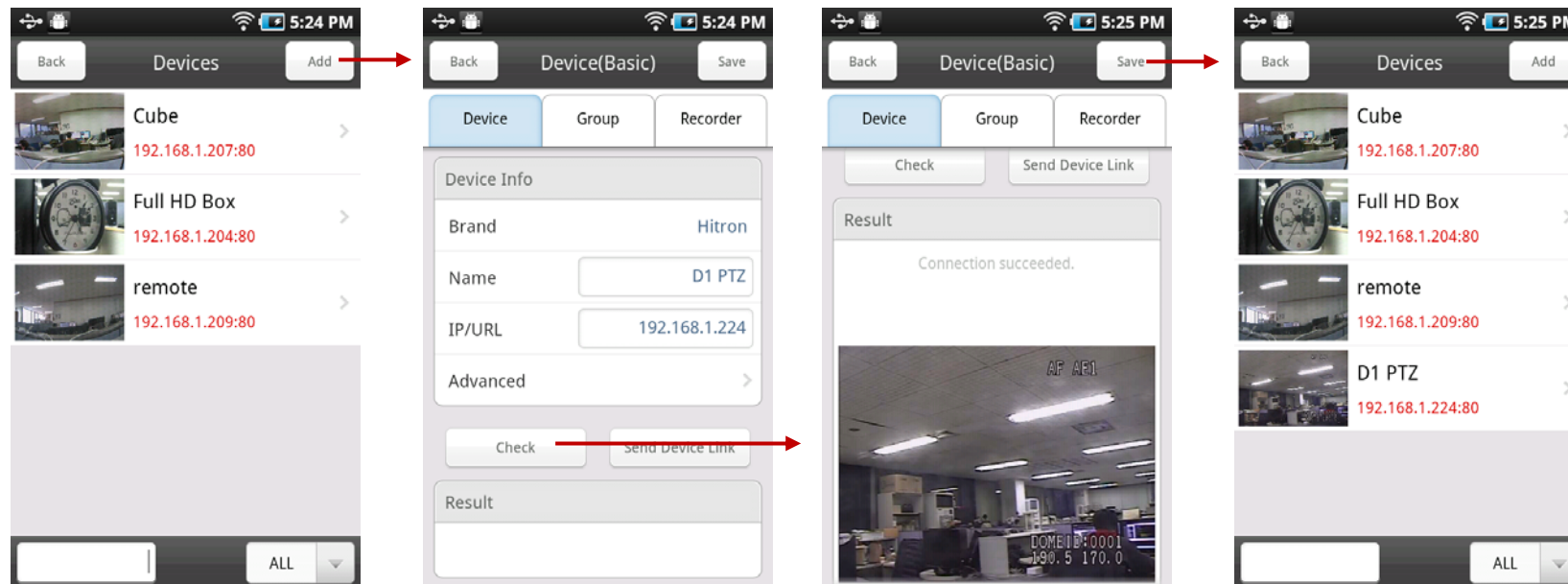


## Device Add

There are two modes – basic and Advanced for addition of Network Device.

- Basic: input Device name and IP Address
- Advanced: input Brand, Model Type, Model, Media, device name, IP Address, Port, ID, Password, Fps, and support searching Network Device in the LAN.

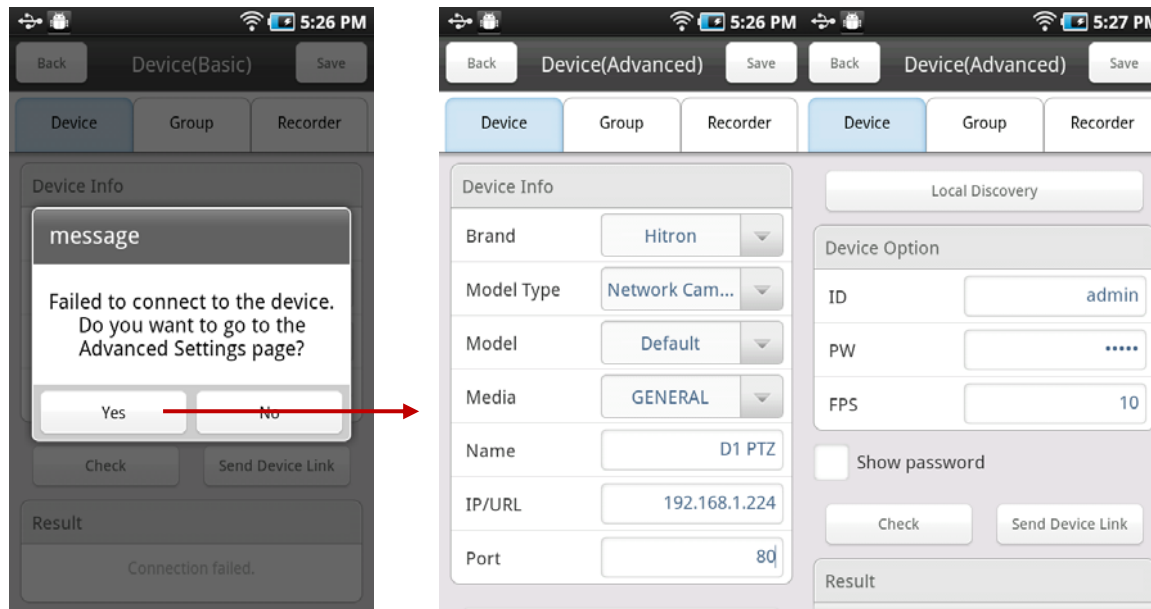
### Basic Mode



If network access is successful, the still image of the device is displayed.



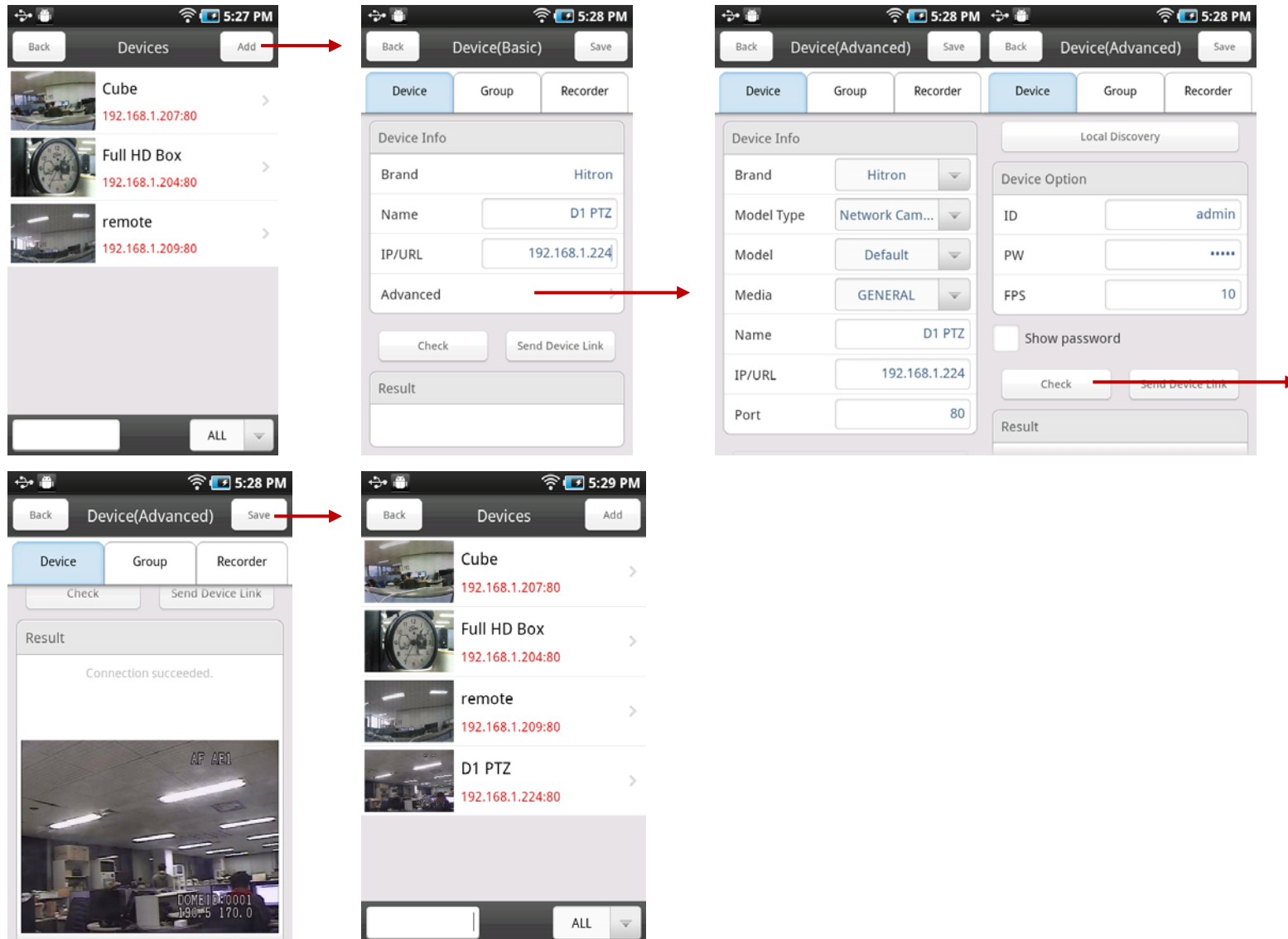
If network access fails, the below selection guide is displayed.







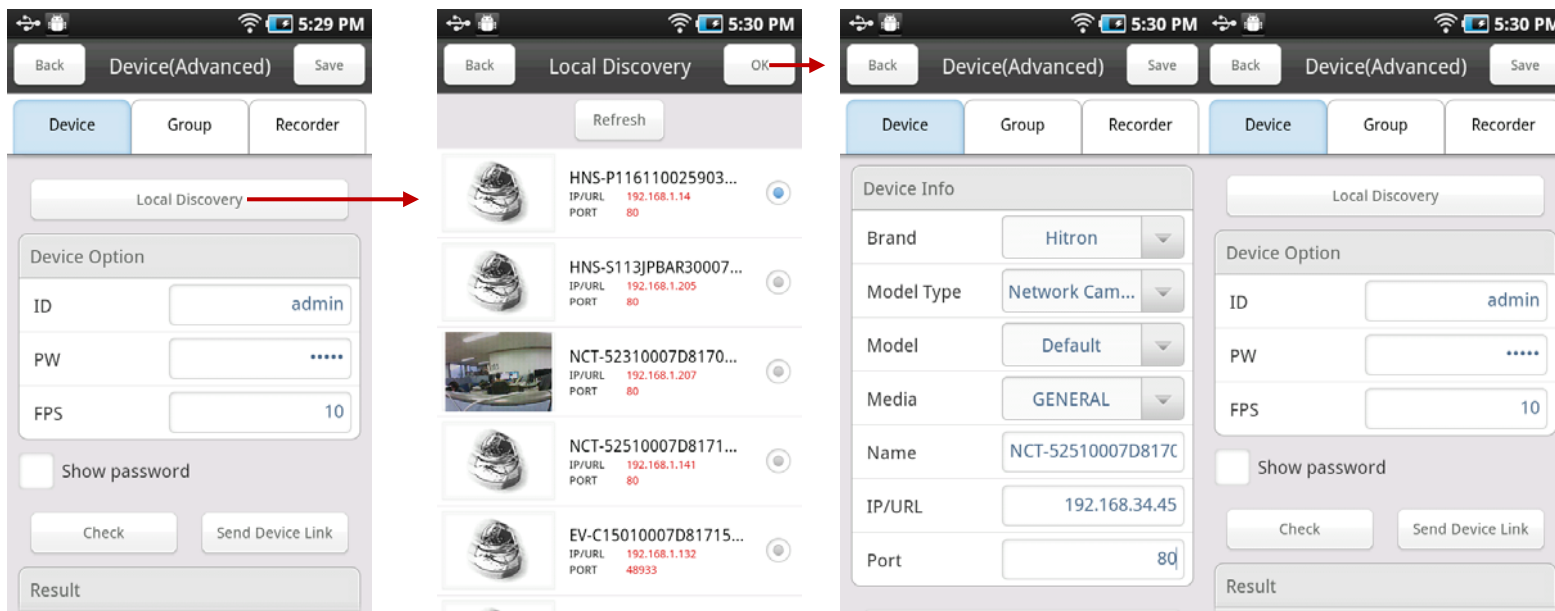
## Advanced Mode





### Local Device Discovery

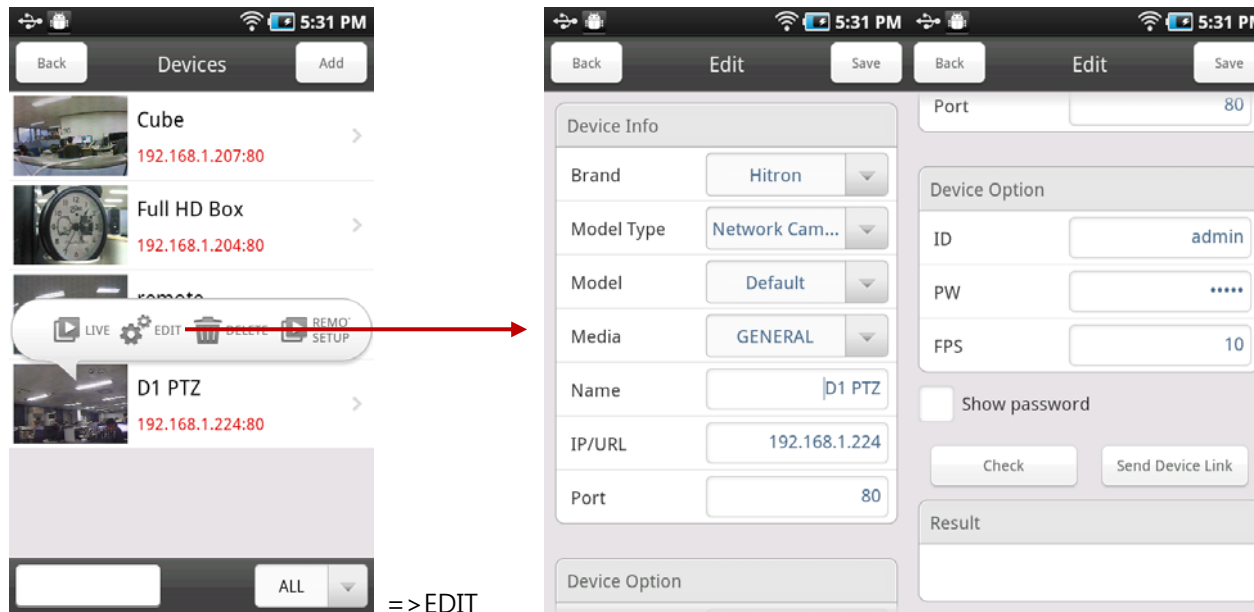
Advanced mode supports searching Network Device in the LAN(Local Area Network), and the selected device data can be automatically imported to the Device(Advanced) Info menu.





## Device Edit / Delete

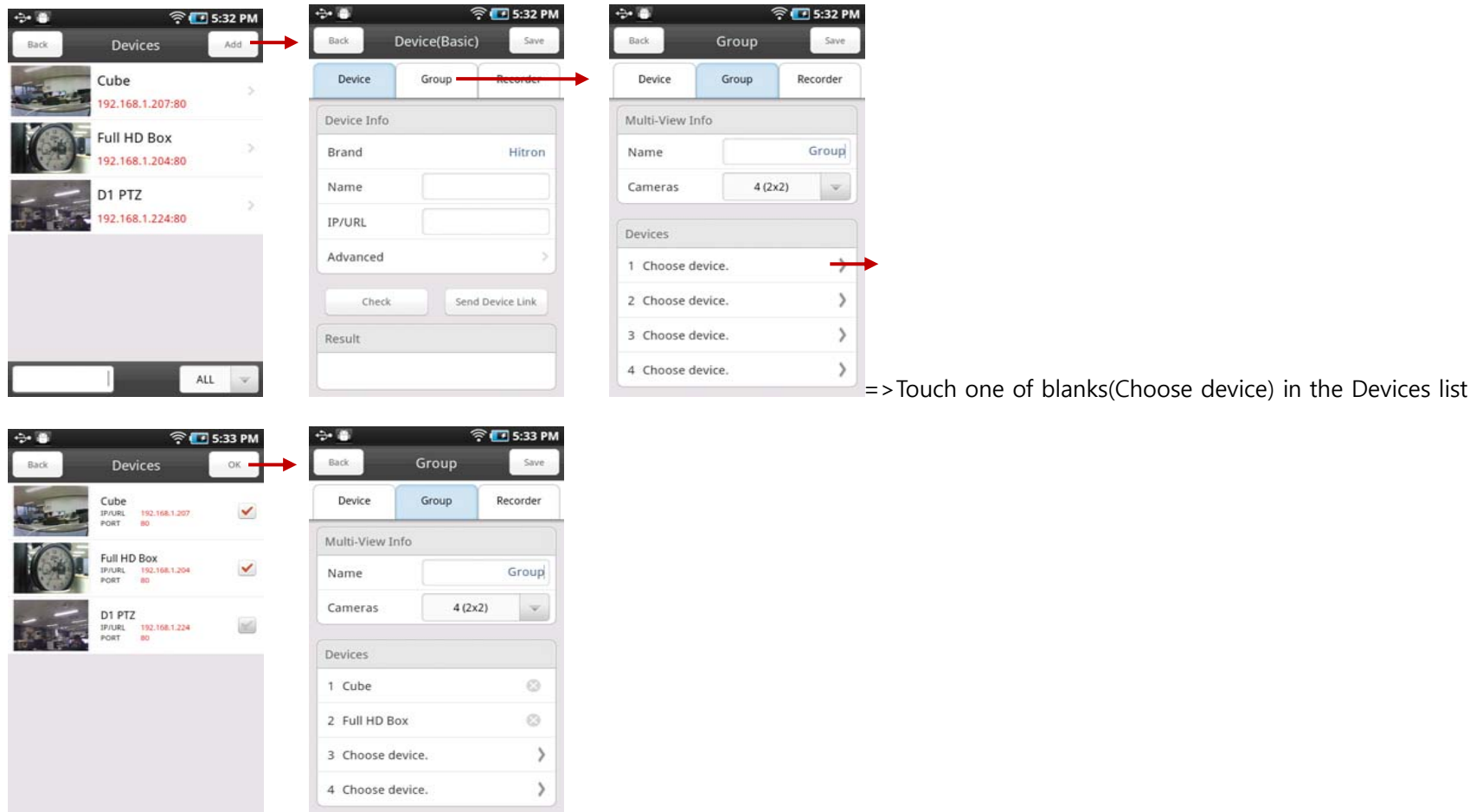
Device information can be edited or the device can be deleted from the quick menu that pops up by touching the thumbnail in the Device List.





## Group Add

After moving to the Group menu, input Group name and select max cameras (channel) number.



=> Touch one of blanks(Choose device) in the Devices list

Check Devices up to the selected max camera number, and touch "OK" to add the selected devices in the Group.

(The selected max cameras (channel) or Devices can be added one by one or up to max number at one time.)

After adding the max number of cameras, touch "Save", then the newly added Group is to be displayed in the Device List.



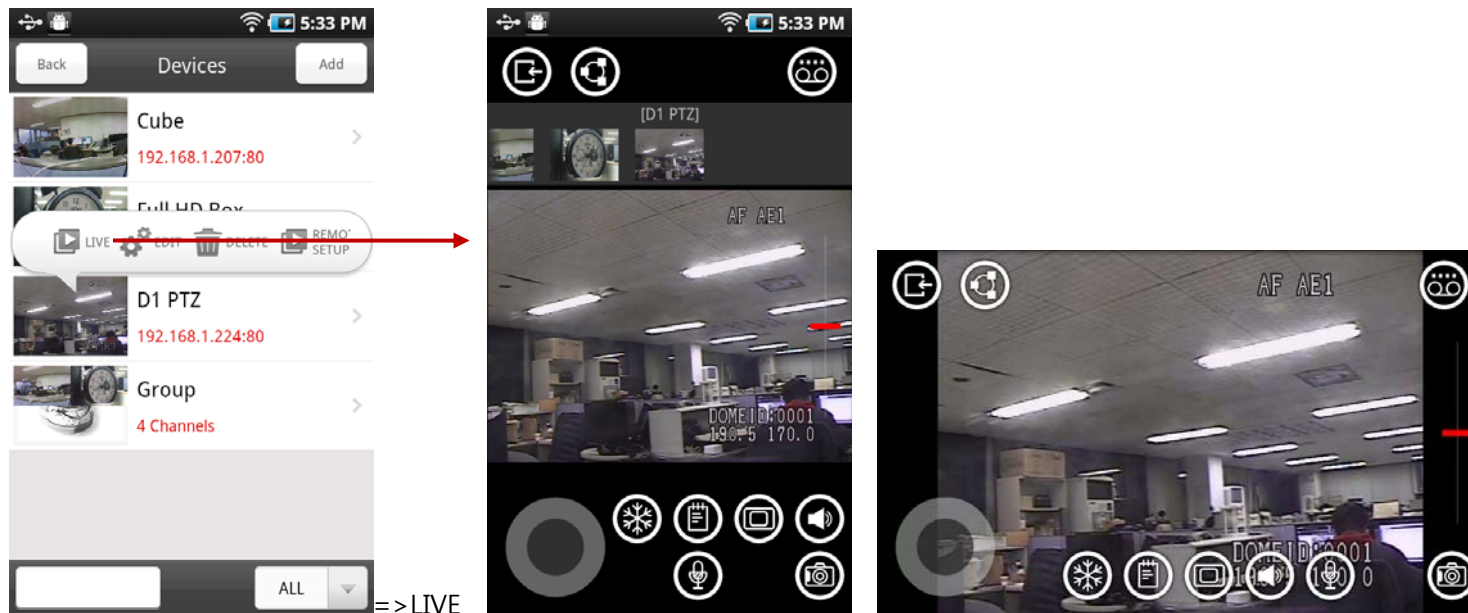
## Group Edit / Delete

As like Device Edit / Delete, Group information can be edited and deleted from the quick menu that pops up by touching the thumbnail of Group.

## Live View

### View

Real time video can be displayed by touching a wanted Device in the Device List or by touching LIVE in the quick men.





## Digital PTZ

Digital PTZ can be executed in the Live View mode by double-touching the screen or by multi-touch with two fingers.



→ double touching



→ double touching





## Basic Function

Basic function icons are appeared by touching the Live View screen.



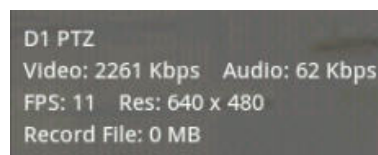
Freeze



Status



Display Device Name, Video/Audio traffic, fps, and resolution.





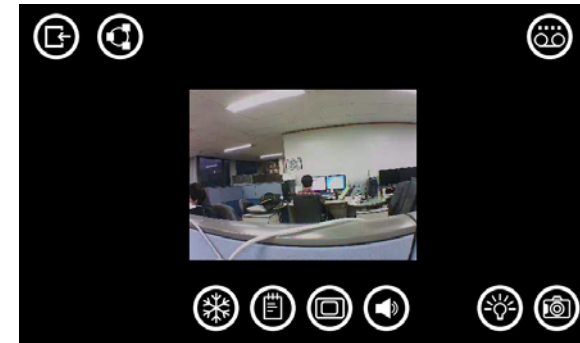


### Screen Scale



Display scale can be selected.

Screen Fit -> Full Screen -> Original Fit -> Screen Fit



### Speaker



Audio can be played.







Mic



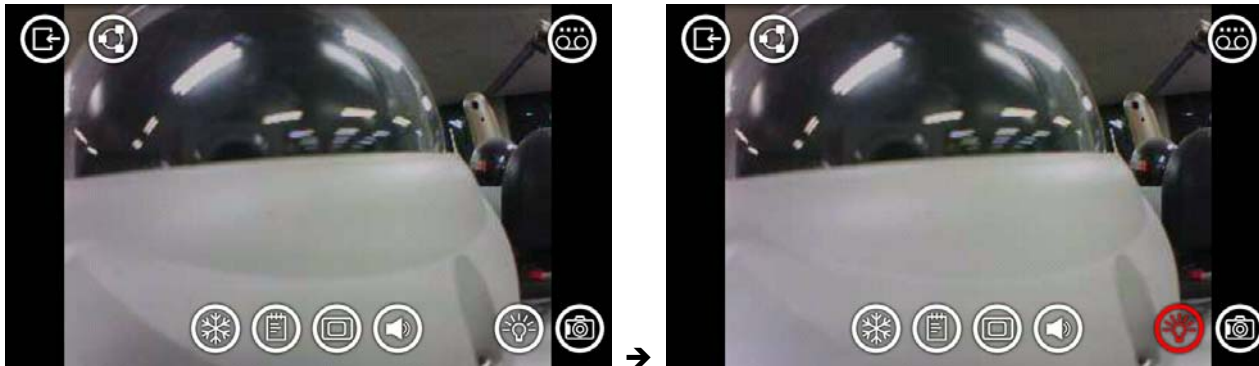
Audio can be transferred to the Device.



LED



White LED of the Device can be on or off.(Cube camera only)





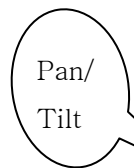
## Snapshot



A still image of the Device is to be saved in the Mobile device storage.



## PTZ



Pan/  
Tilt



Pan – right/left    Tilt – up/down



Zoom – in(drag up) / out(drag down)



Zoom



### Local Record

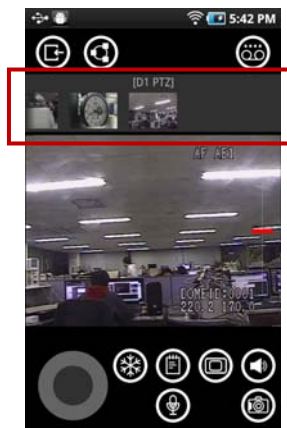


The played video and audio of the Device can be recorded in avi format in the Mobile device storage. The recorded data file size is displayed on the screen.



### Device Gallery

In the Vertical display mode of the mobile device, user can select other Network Devices on top of the screen during the displaying mode of the current Network Device without going back to the Device list.

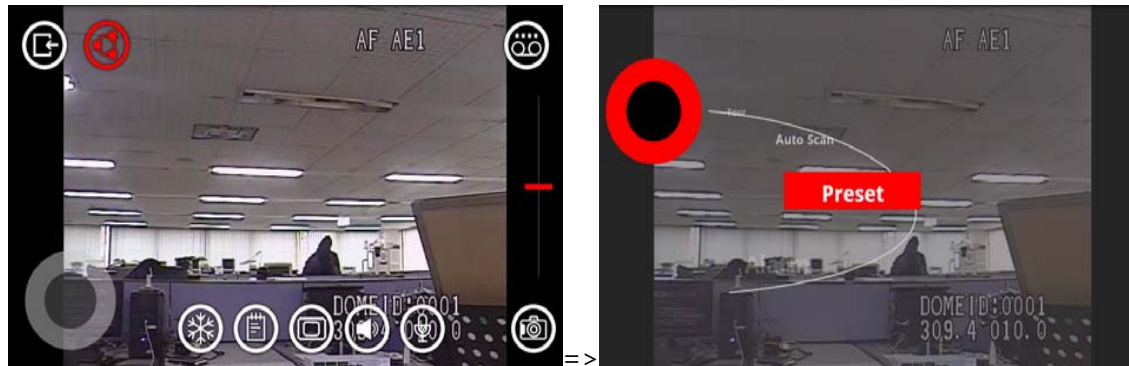




## Advanced Function



Additional PTZ control can be done to the PTZ Network Device. The advanced function menu is to be changed by the red round button on the below right image.



## Alarm Trigger

The device's Alarm can be triggered manually.





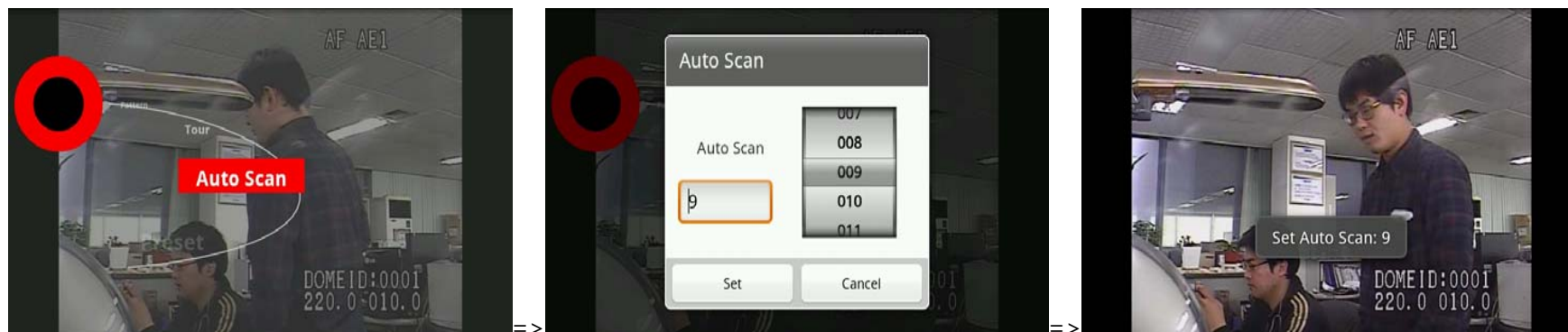
### Preset

A specific preset of the Device can be executed by the following process.



### AutoScan

A specific AutoScan of the Device can be executed by the following process.

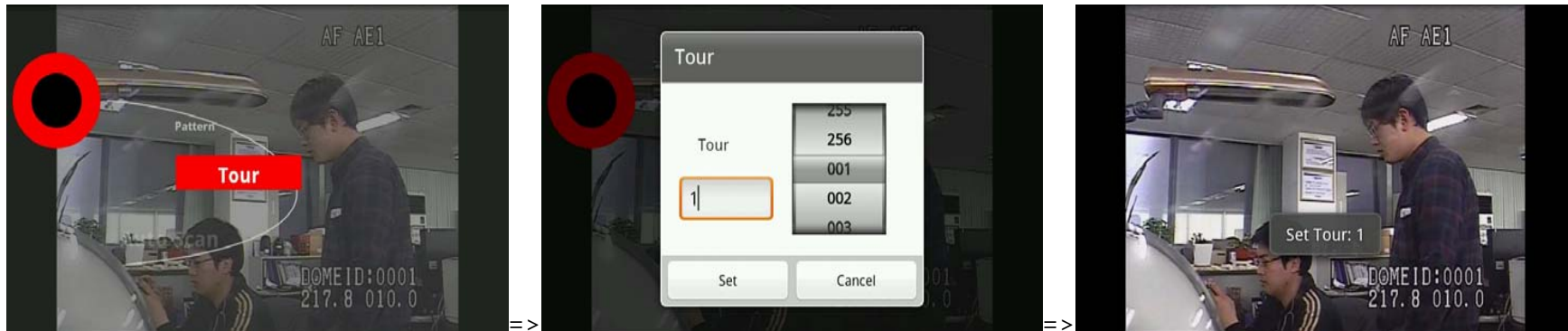






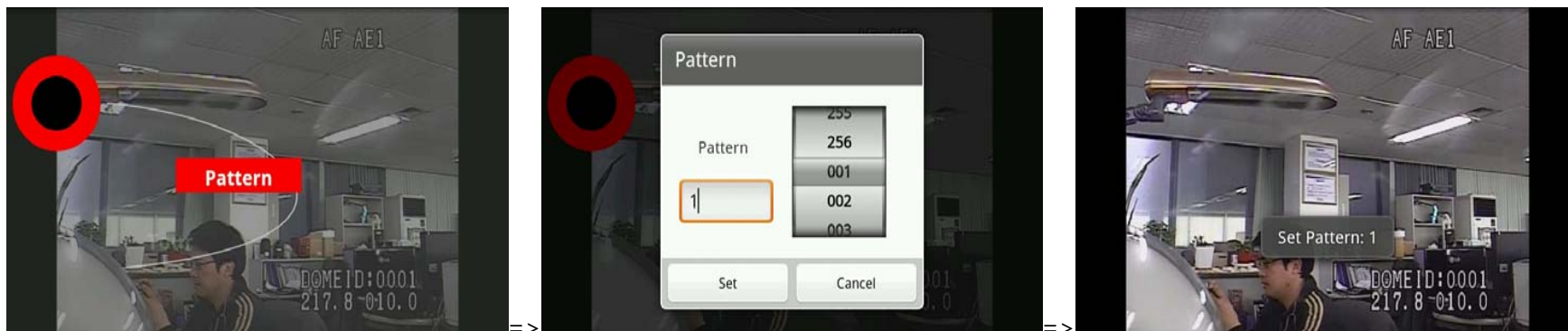
### Tour

A specific AutoScan of the Device can be executed by the following process.



### Pattern

A specific Pattern of the Device can be executed by the following process.

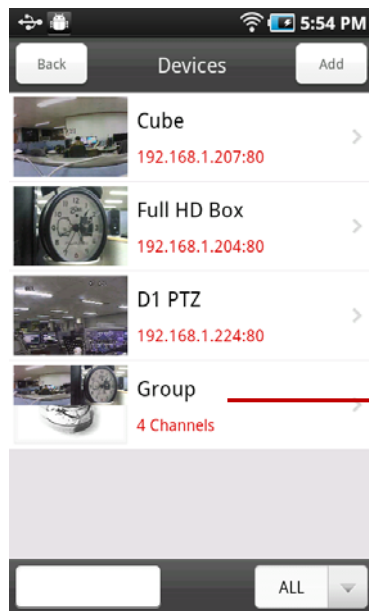




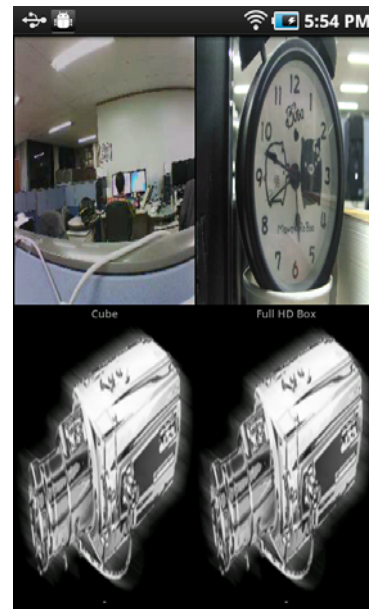
## Group View

The live view of Network Devices registered in a specific Group can be displayed.

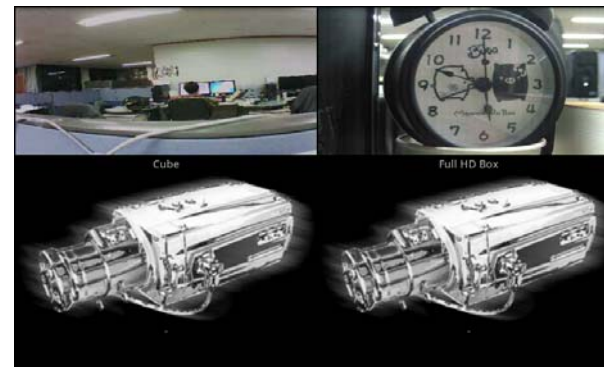
### Group Live View



=> LIVE



or





### A specific Device's Live View in full screen

One of the Devices in a Group can be displayed in full screen by touching the screen.



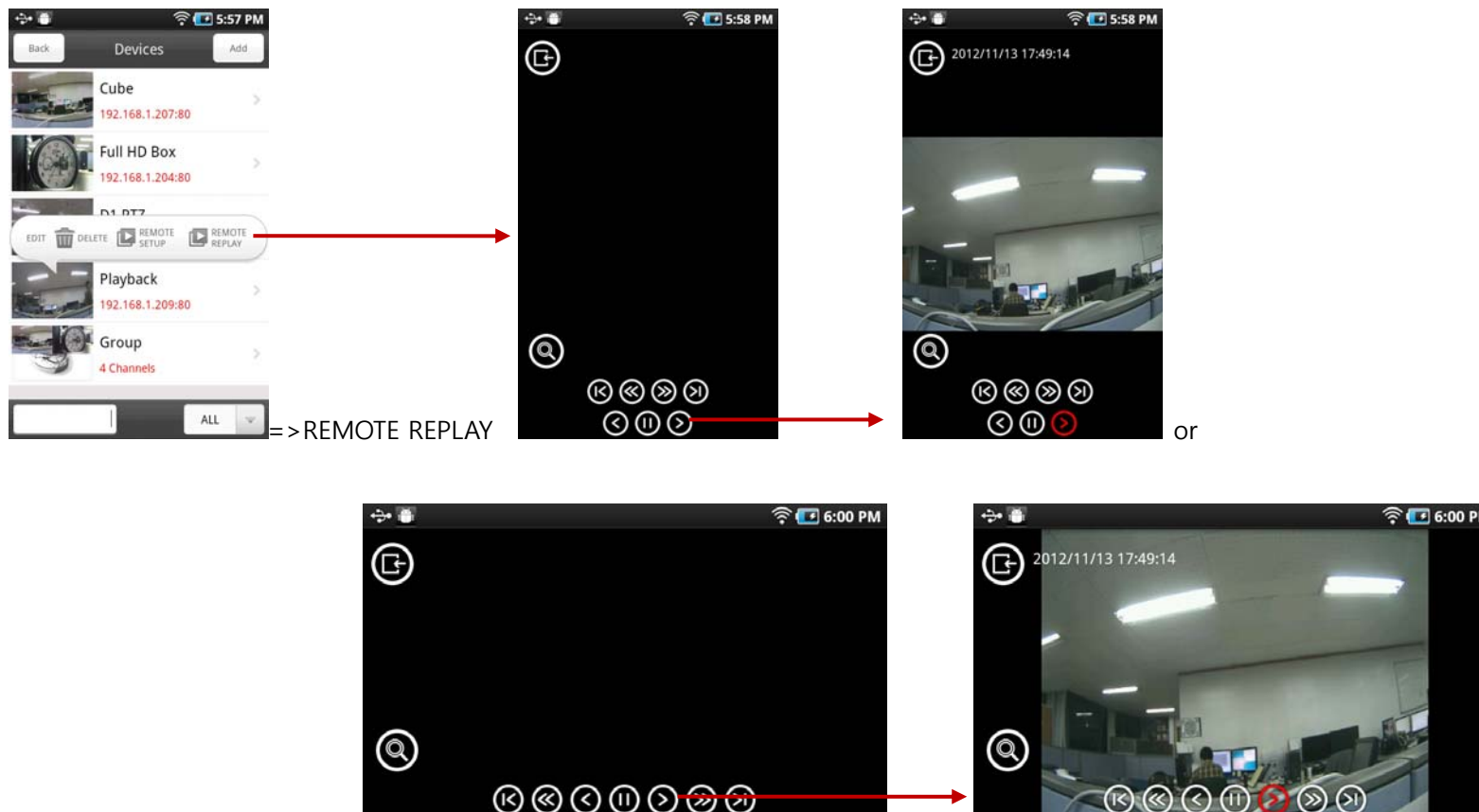




## Remote Replay

The recorded Video & Audio in the selected Network Device can be searched and played. This function can be executed only for the Network Device that has a built-in storage media.

### Replay View

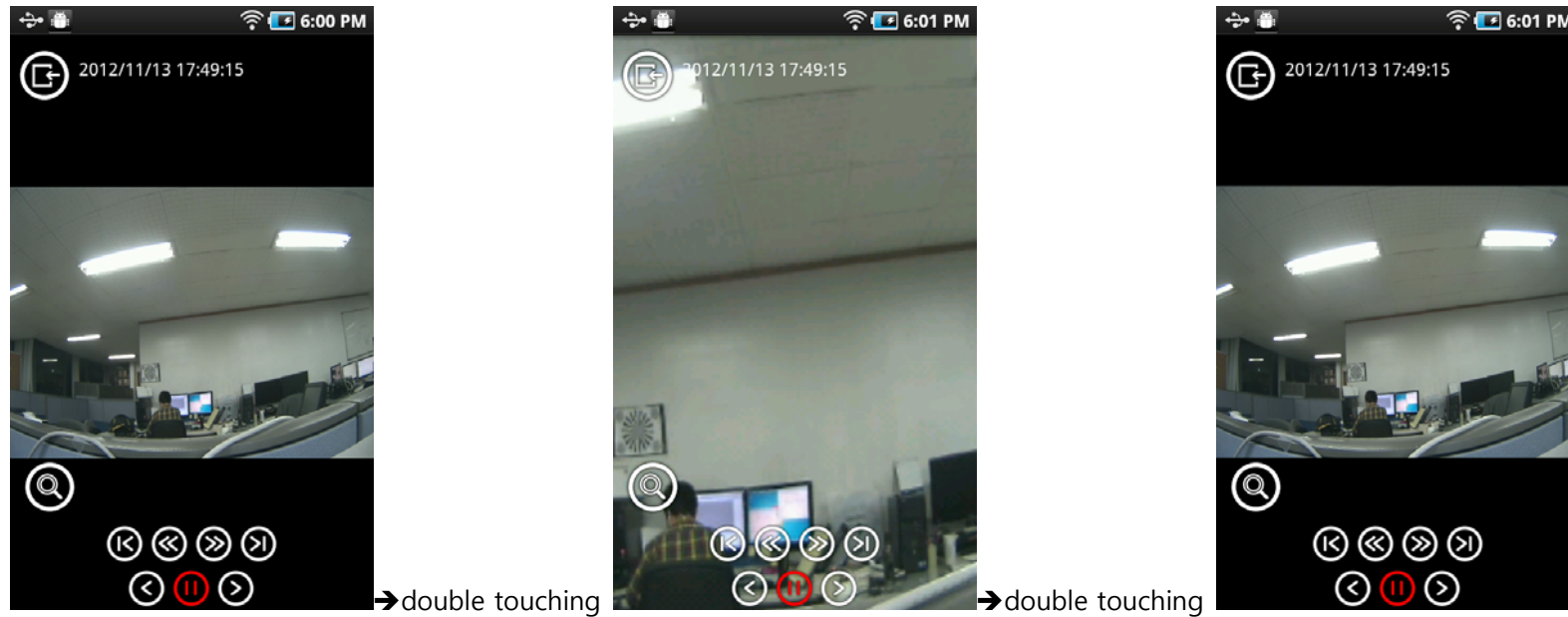


The last recorded video is to be played. If there is no video, the recorded video can be found with Search function.




## Digital PTZ during playback

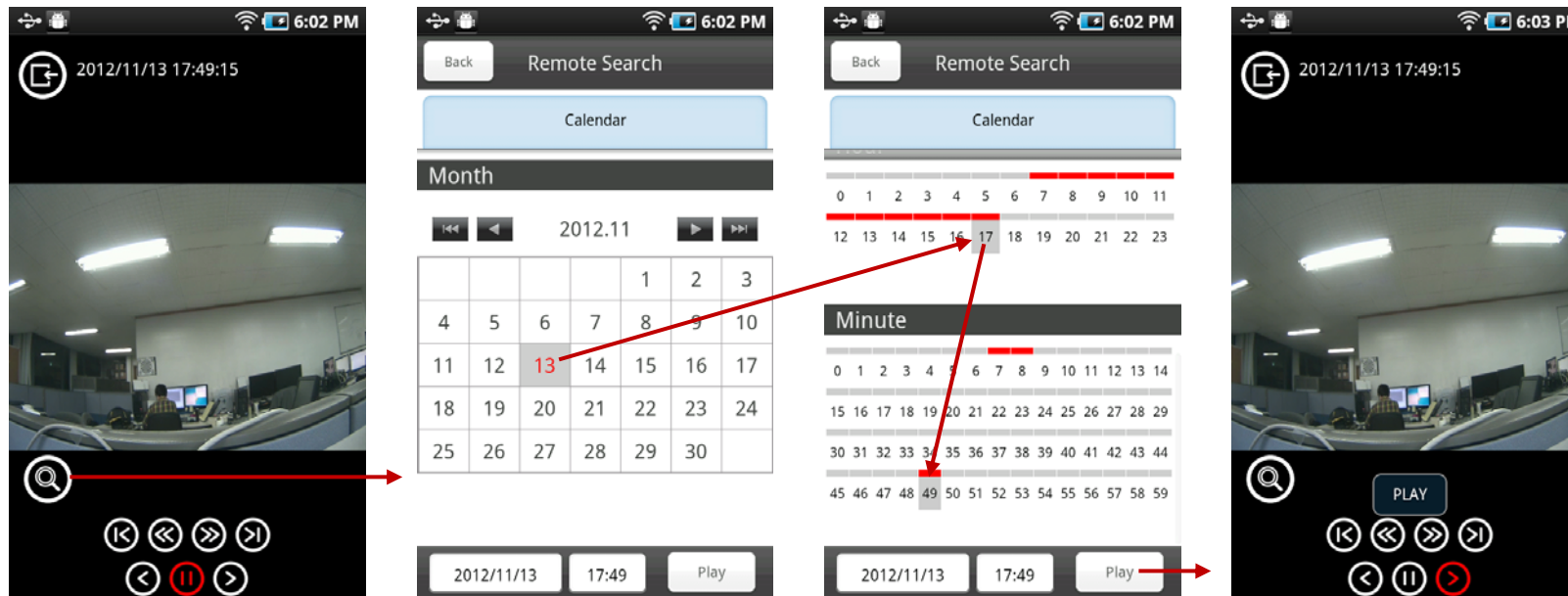
Digital PTZ can be executed during playback mode by double-touching the screen or by multi-touch with two fingers.





## Calendar Search

The recorded video can be searched by selecting date, hour and minute after touching  button.

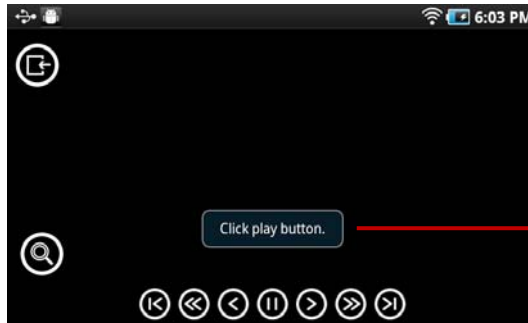
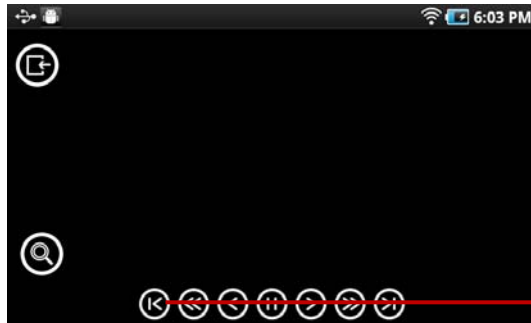




## Playback Control



Go to First



Fast Backward Play



Backward Play



Pause





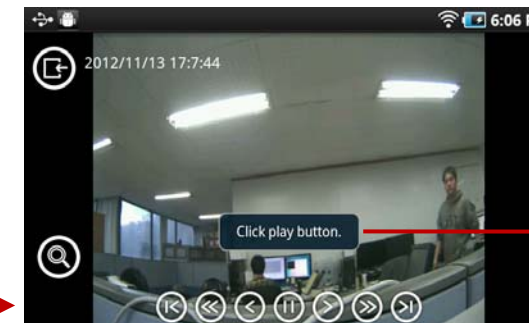
Forward Play



Fast Forward Play



Go to Last



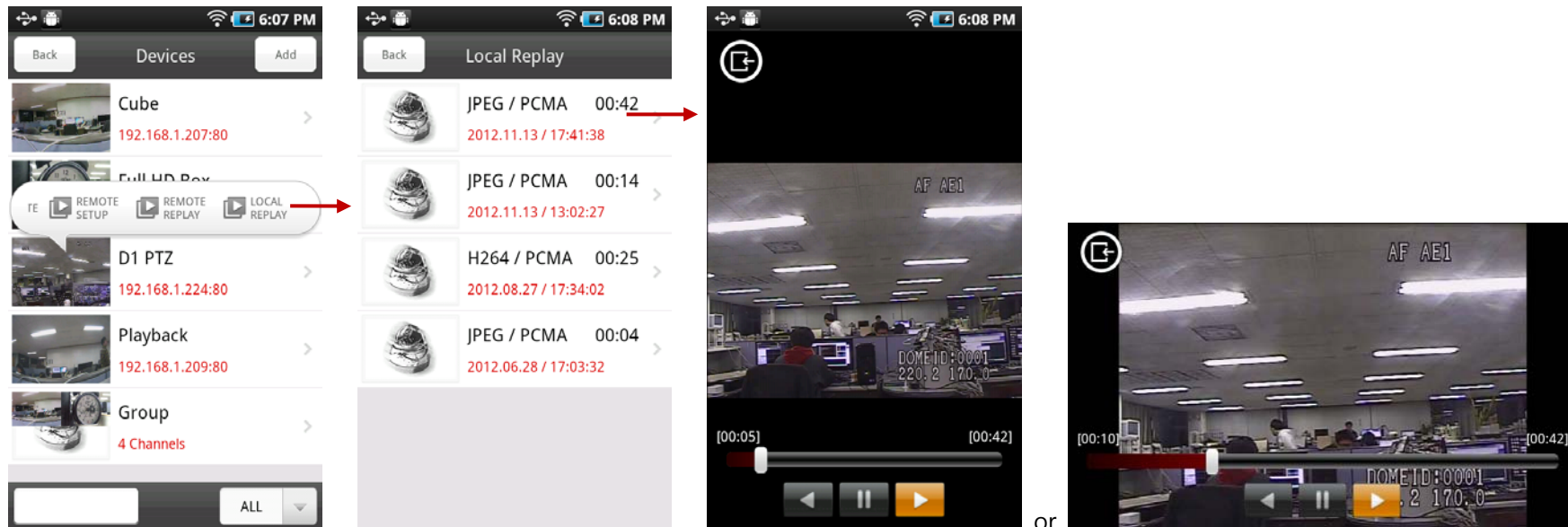


## Local Replay

Network Devices' live video & audio can be recorded in avi format in the mobile storage during Live View mode, and the recorded avi file can be searched and played.

### AVI List & View

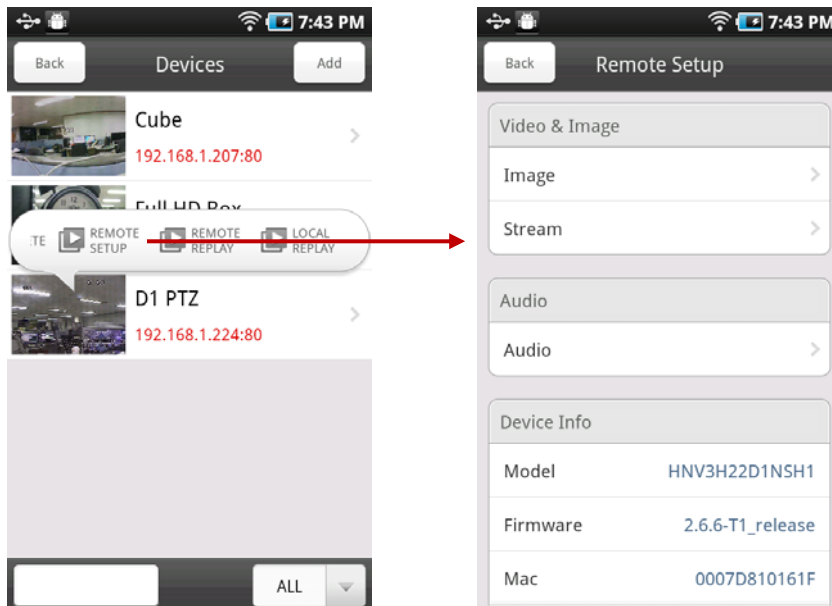
The avi file list can be shown by touching the Local Replay on the quick menu of the selected Network Device, and the touched avi file can be played back.





## Remote Setup

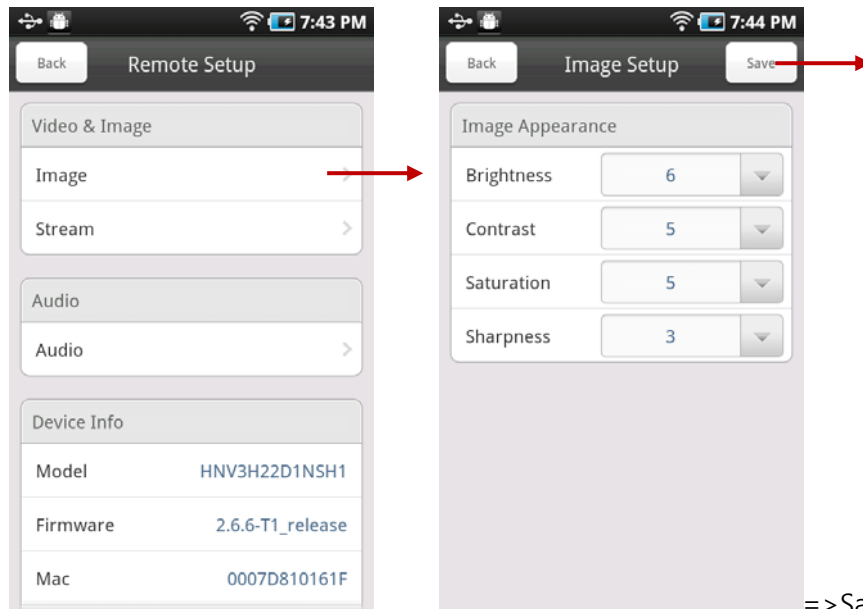
The Video & Image and Audio setup data of the selected Network Device can be adjusted from the mobile device.





## Image Setup

Brightness, Contrast, Saturation, Sharpness value can be adjusted, and the changed value is saved in the Network Device by touching Save.



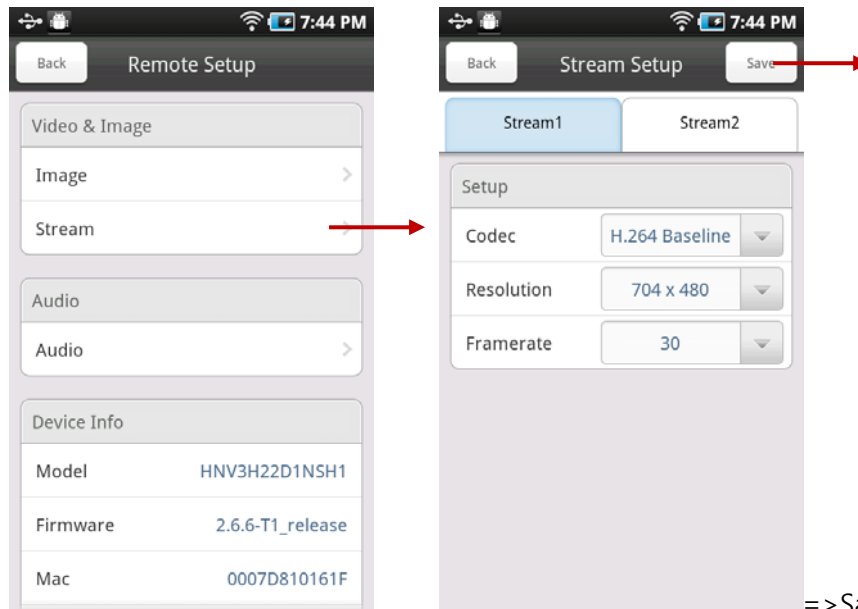
=> Save the changed value in the Network Device





## Stream Setup

Codec, Resolution and Framerate can be adjusted, and the changed value is saved in the Network Device by touching Save.

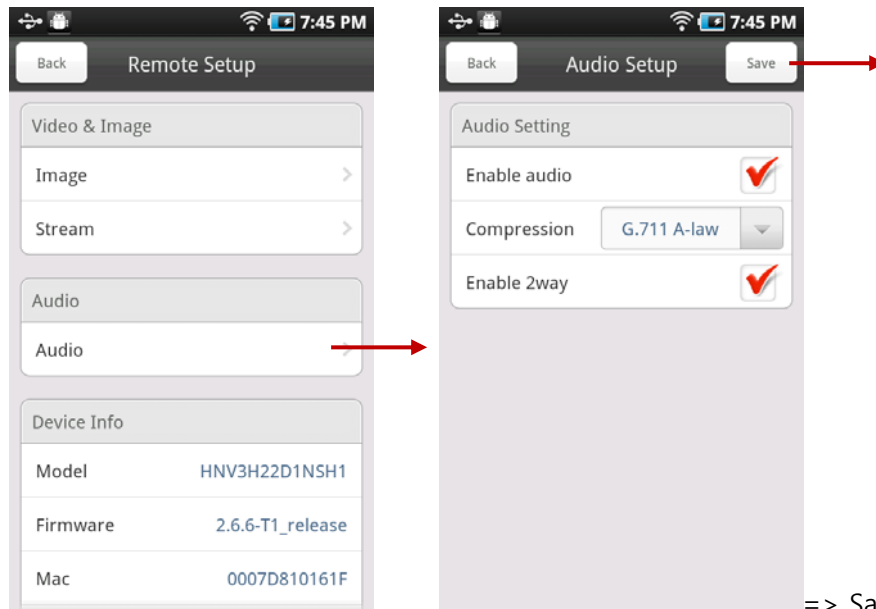


=> Save the changed value in the Network Device



## Audio Setup

The audio option and the compression option can be changed and saved in the Network Device by touching Save.



=> Save the changed value in the Network Device



## Restart

If the accessed Network Device seems to be abnormal, it can be restarted by the Mobile device remotely.

