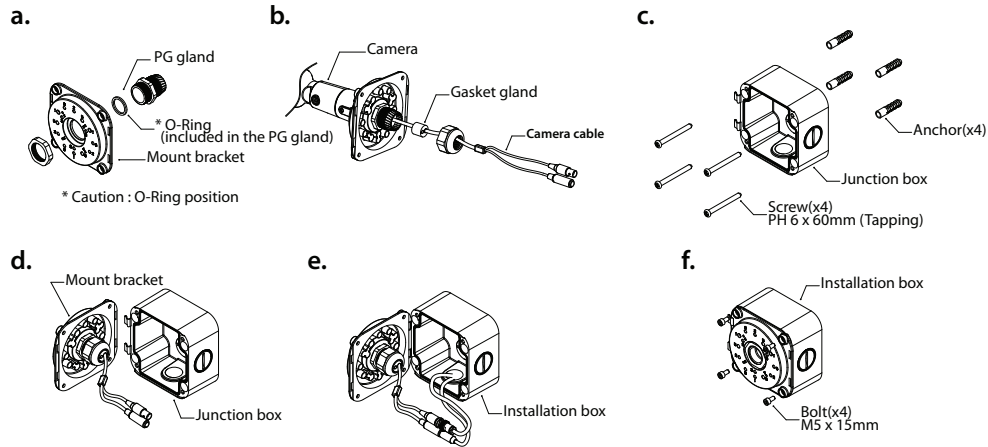
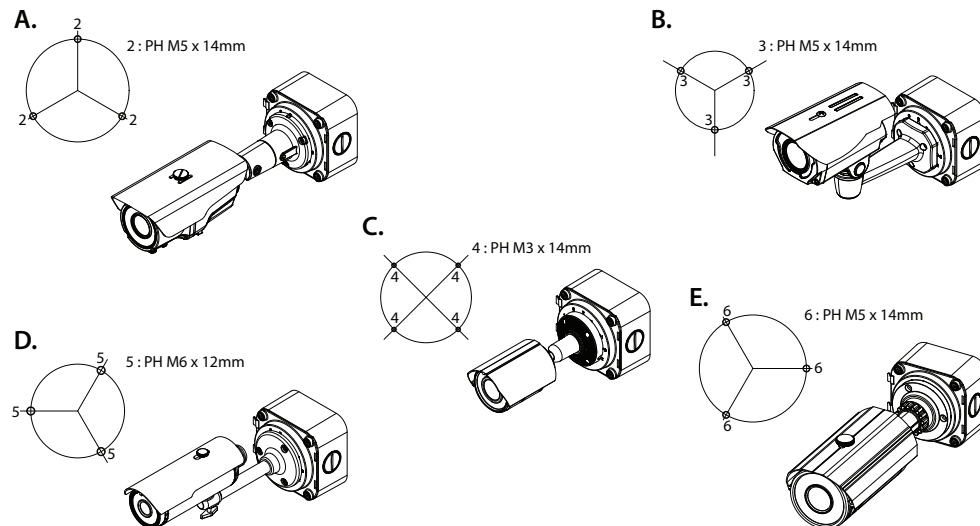


Base installation

1. Assemble PG gland to mount bracket.(a)
2. Attach the camera to the mount bracket using the screws.(b)
3. Fix the camera cable using gasket gland.(b)
4. Drill the mounting location, using the template sheet.
5. Attach the junction box to the wall, using the mounting screws and plastic anchors.(c)
6. Attach the camera to the junction box using the hooks.(d)
7. Connect power and camera cable.(e)
8. Closing the installation box using the wrench bolts.(f)

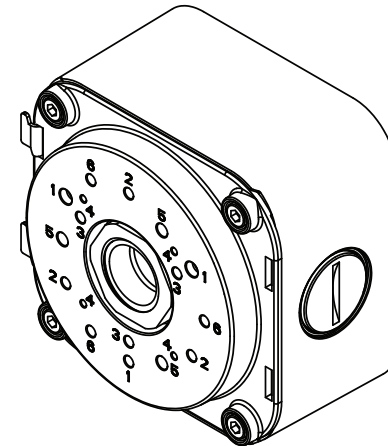


Camera installation

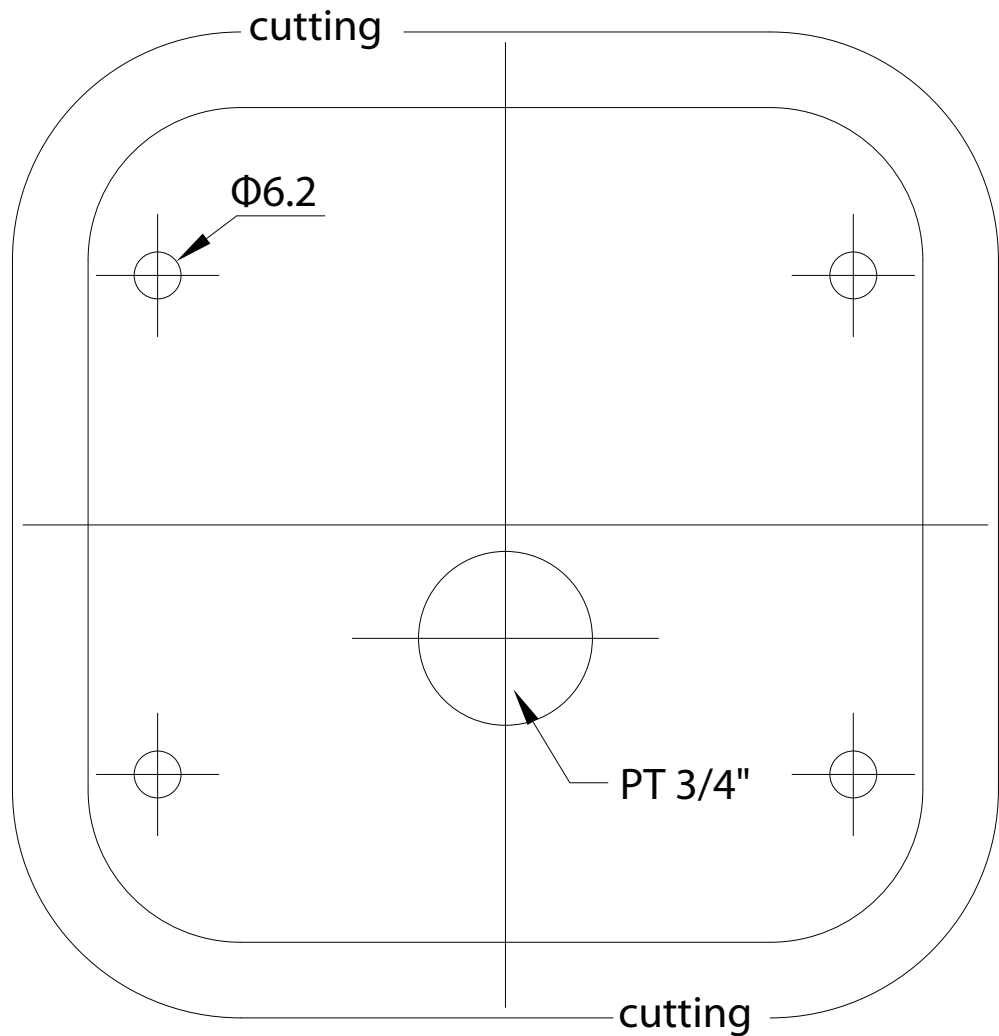


INSTRUCTION MANUAL

INSTALLATION BOX



Template sheet



Package contents

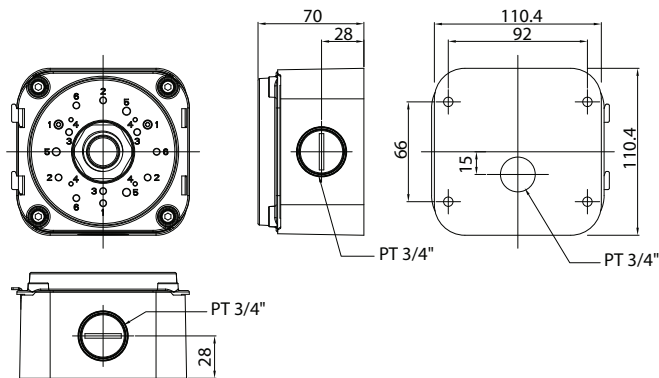
Carefully remove the contents from the box, and verify that nothing was damaged in shipment.

- Installation box
- Accessory kit
- Manual (Template sheet)

Part's list

| No. | Part's name | Q'ty | Description |
|-----|---------------|------|-----------------------|
| 1 | Mount bracket | 1 | AL |
| 2 | Junction box | 1 | AL |
| 3 | PG gland | 1 | PG21 |
| 4 | Gasket gland | 1 | Silicone |
| 5 | Bolt | 4 | M5 x 15mm |
| 6 | L-Wrench | 1 | M5 |
| 7 | Screw | 3 | PH M5 x 14mm |
| 8 | Screw | 3 | PH M6 x 12mm |
| 9 | Screw | 4 | PH M3 x 14mm |
| 10 | Screw | 4 | PH 6 x 60mm (Tapping) |
| 11 | Anchor | 4 | |

Dimension drawing



Specifications

| No. | Mechanical | Description |
|-----|----------------------|-----------------------------------|
| 1 | Dimension | See dimensional outline |
| 2 | Construction | Die cast and Aluminum |
| 3 | Finish | Polyester power coat |
| 4 | Weight (set+packing) | 895g(720+175) / 1.97lb(1.59+0.38) |