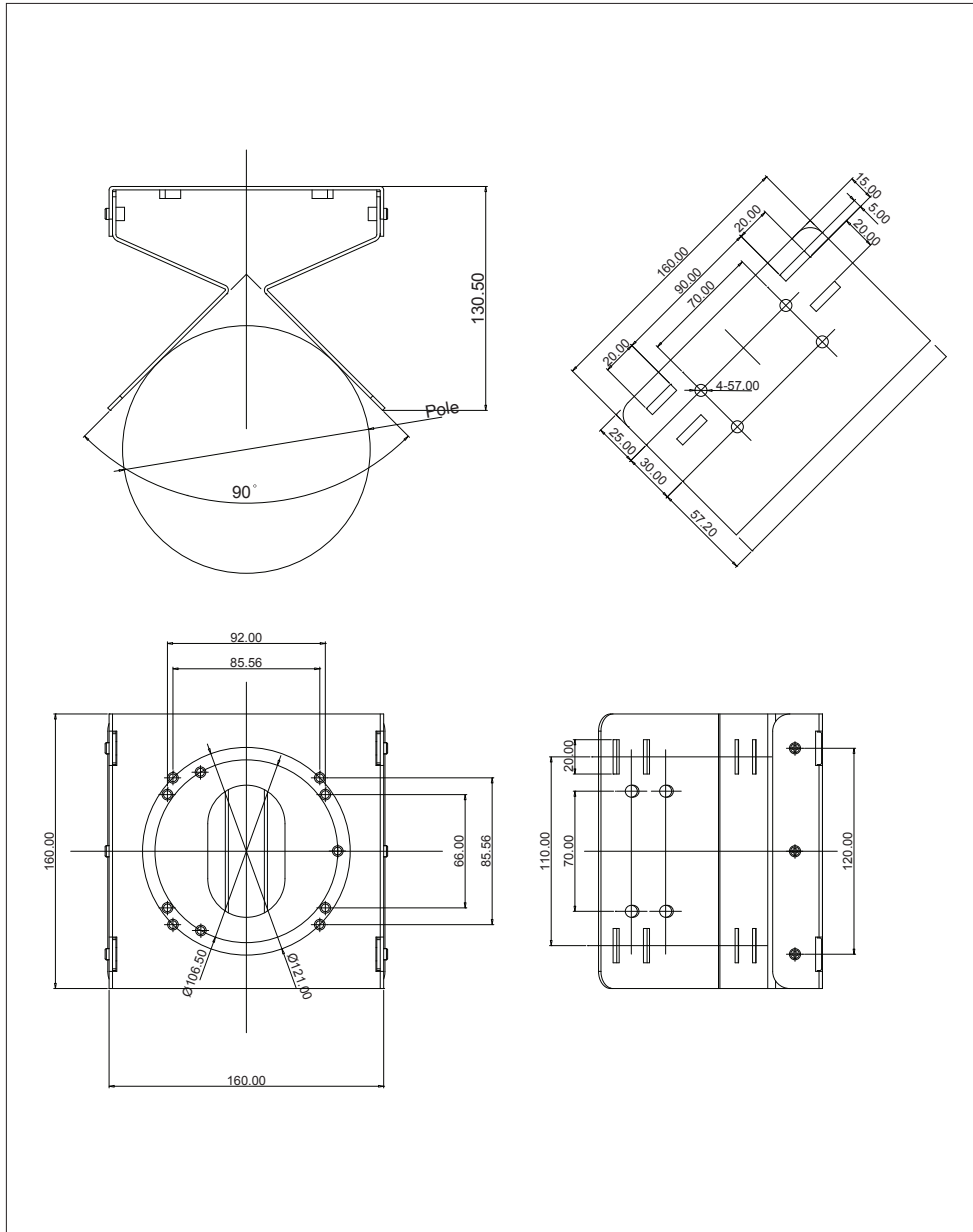


DIMENSIONS



50304375A

HCM160

POLE MOUNT & CORNER BRACKET



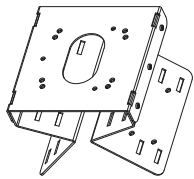
Before installing and using this product, please read the instructions fully and carefully, And be sure to keep it handy for late use.

Prior to Use

- Avoid installing the mount onto an unstable structure such as a gypsum wall panel.
- Install the mount onto a strong structure such as a concrete wall, steel beam, etc.
- Use concrete screws with plugs or other installation tools when installing the mount onto a concrete structure, make sure that all the screw parts are metallic.
(Avoid screwing too close to the edge of a piece of wood when screwing into a wooden structure)

Composition

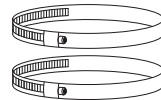
- Confirm that the following parts are included.



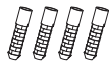
Pole Mount & Corner Bracket



Instruction Manual



Stainless Hose Band (2pcs)



4pcs
Plastic Anchor (D6)



4pcs
Screw Tapping
BH 6x35L Stainless

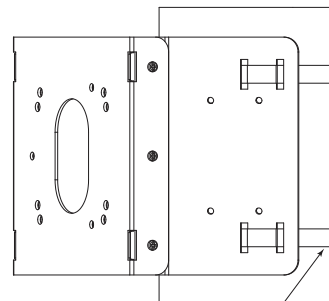


4pcs
Screw Machine (SEMS)
PH M5x16L Stainless

Composition

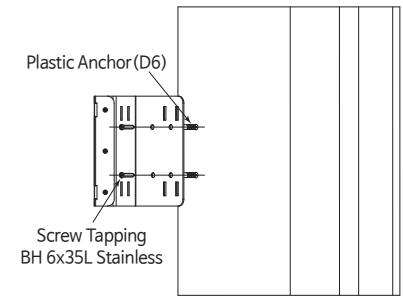
- Mounting to the poles or the corners of building structure.

Feed the hose bands through the vertical slots located on the four corners of the mounting flaps as shown below. Wrap the hose bands around the pole like structure then use the driver to rotate the screw that is attached at the end of the hose bands clockwise. Rotating the screw shortens the bands thereby fastening them around the structure.



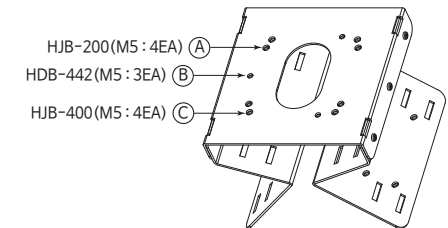
Stainless Hose Band
D=260mm (10.24inch)

Using the pole & Mount as a template, mark the locations of the six screw holes where the mounting adaptor will go. Install the plastic anchors (D6) at the six pre-marked locations. Use the screws with washers to affix the mount adaptor to the corner of a building structure.

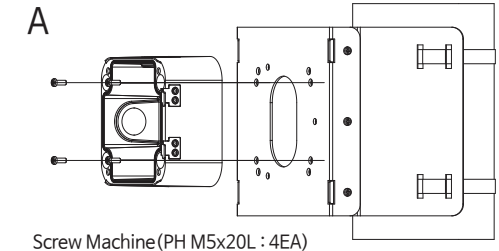


- Mounting the power box or wall mount to the pole & corner mount.

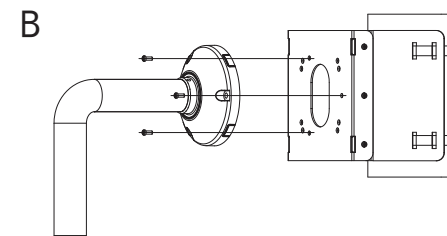
Using the appropriate screws and nuts supplied, affix the power box base to the pole & corner mount at the four corners of the mounting surface.



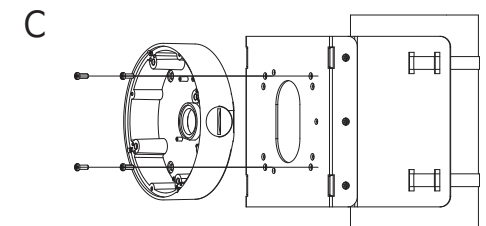
Using the appropriate screws supplied, affix the power box base to the pole & corner mount at the four corners of the mounting surface as shown below.



Using the appropriate screws and nuts supplied, affix the wall mount to the pole & corner mount at the four corners of the mounting surface as shown below.



Screw Machine (PH M5x20L : 3EA)



Screw Machine (PH M5x20L : 4EA)