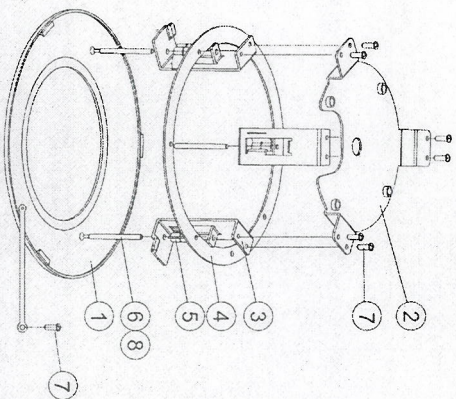


## 4. EXPLODED ASSEMBLY PARTS LIST



[ Figure 8 : Exploded Assembly ]

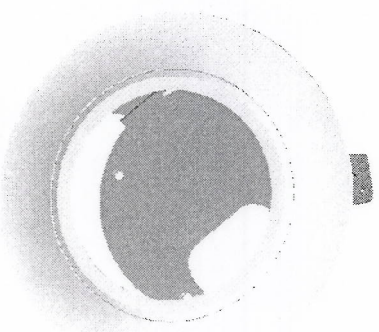
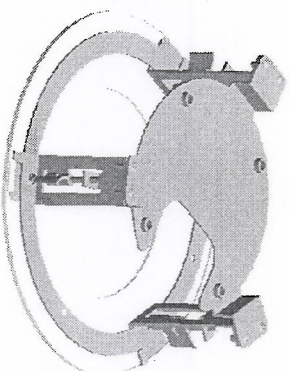
### EXPLODED ASSEMBLY PARTS LIST

| Item | PART NAME       | Q'ty | DESCRIPTION        |
|------|-----------------|------|--------------------|
| 1    | Ass'y TRIM RING | 1    | ABS & SAFETY CABLE |
| 2    | BASE BRACKET    | 1    | STEEL (EGI 1.6T)   |
| 3    | GUIDE BRACKET   | 3    | STEEL (EGI 2.0T)   |
| 4    | DOME RING       | 1    | STEEL (EGI 1.6T)   |
| 5    | LEVER CLAMP     | 3    | Al EXTRUDE (M4)    |
| 6    | SCREW SPECIAL   | 3    | M4, L=55, MSWR     |
| 7    | SCREW MACHINE   | 7    | M4, L=6            |
| 8    | E-RING          | 3    | D=Ø4               |

### ACCESSORY

| Item | PART NAME                | Q'ty |
|------|--------------------------|------|
| 1    | SCREW MACHINE M6 x 12L   | 4    |
| 2    | O-RING                   | 4    |
| 3    | SAFETY RING CABLE        | 1    |
| 4    | SCREW MACHINE(1) M4,L=12 | 1    |
| 5    | SCREW MACHINE(2) M4,L=8  | 1    |
| 6    | SPECIAL SCREW M6,D=13.2  | 4    |

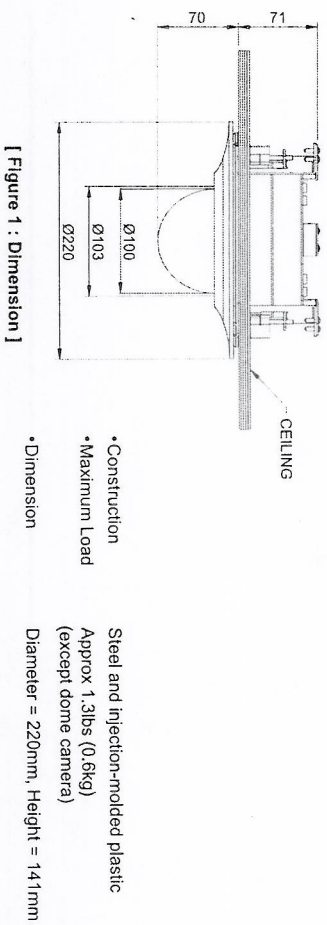
## FLUSH MOUNT HARDWARE



# 1. INTRODUCTION

This mounting device enables the dome camera to be mounted to the suspended ceiling. The mounting clamps, which are affixed to the ceiling tile, attach directly to the dome's mounting base for a quick and easy installation.

# 2. SPECIFICATIONS



# 3. INSTALLATION

**NOTE: The ceiling tile cannot be thicker than 0.9inch (2.4cm).**

- Remove the ceiling tile from the ceiling. Draw a circle whose diameter is 184mm on the tile (You can use the carton with a hole). Cut the circle out of the ceiling tile. [ Figure 2 ]
- To install the dome camera, fasten the Bottom case to the base bracket [ Figure 8, ② ] using 4 screws which are included in accessories. [ Figure 3 ]
- Insert the flush mount into the ceiling and turn the lever clamp [ Figure 8, ④ ] to fasten the flush mount to the ceiling. [ Figure 4 ]
- Join the TOP CASE to the Dome Camera BOTTOM CASE [ Figure 5 ]
- Fix the trim ring [ Figure 8, ① ] to the flush mount. [ Figure 6 ]

**NOTE: To prevent accidental falling of the dome fixture from the ceiling tile, attach the safety cable to the guide bracket and then to a firm structure above the ceiling tile.**

