



ADVANCED
TECHNOLOGY
VIDEO

IP PRODUCT SERIES

>>> 2MP, TRIPLE STREAM, TRUE DAY/NIGHT,
IR, IP VANDAL DOME

IR IP VANDAL DOME *IPVD2TI*



- > Brilliant Video Quality with 2MP Full HD, 1920 x 1080 Resolution
- > Highly Efficient H.264 Video Compression which Drastically Reduces Bandwidth and Storage Requirements
- > Progressive Scanning for Sharper Video Motion Images
- > 3.5-16mm Vari-focal Auto-Iris Lens
- > Triple Video Streams Simultaneously up to 30-ips at 1080p Resolution, using H.264 and MJPEG Compression
- > TRUE Day/Night functionality for Low-Light conditions
- > Supports a Micro-SD Memory Card Slot for Local Event Detection Recording
- > Powerful IR LED Lights for 0Lux Night Time Operation up to 80 Feet
- > Backlight Compensation, 2D-DNR (Digital Noise Reduction) and Auto White Balance
- > Motion Detection (8 Windows), Privacy Masking (8 Windows) and FTP Image Upload
- > Up to 10 Simultaneous Connections through Remote Monitoring
- > View and Record up to 64 Cameras or View and Manage up to 64 NVR's, with included ATVision IP Remote Management Software
- > ONVIF Profile S Compliant for Network Video Interoperability
- > IP66 Weather Resistant Rated and Impact Resistant Vandal Housing
- > Optional Wall and Pendant Mounts Available
- > PoE & 12VDC Power Option Capability

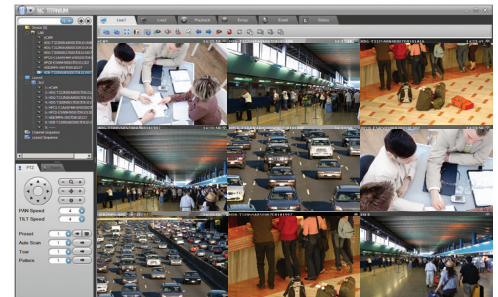
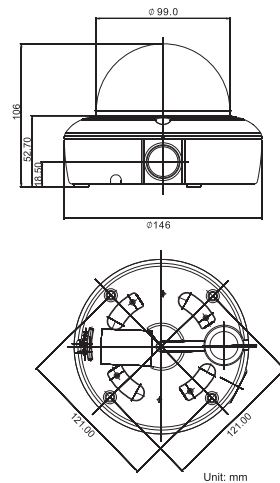


ADVANCED
TECHNOLOGY
VIDEO

SPECIFICATIONS

	MODEL	IPVD2TI
CAMERA	Image sensor	1/2.8" Progressive scan RGB CMOS
	Active Array	1920(H) x 1080(V)
	Lens	Varifocal 3.5mm ~ 16mm, F1.2 DC IRIS
	Angle of View	3.5mm – 77.2°(H) / 16mm – 22.6°(H)
	IR Distance	80Ft (25m) with 36 LED Lights
	Min. illumination	Color: 0.2Lux, B/W: 0.0Lux(F1.2, 50IRE)
	Shutter Speed	1/20,000 ~ 1/4
NETWORK	Video Compression	Motion JPEG, MPEG-4 Part2, H.264 (MPEG-4 Part 10) Profiles: H.264 MP and BP, MPEG-4 ASP and SP
	Video Resolutions	320x 240 ~ 1920x1080
	Frame Rate	30fps @ all resolutions
	Video Streaming	Simultaneously H.264(or MPEG-4) and MJPEG, Controllable Frame Rate and Bandwidth VBR/CBR H.264 and MPEG-4
	Protocol	TCP/IP, UDP, IPv4/v6, HTTP, HTTPS, QoS, FTP, SNMP, uPnP, RTP, RTSP, RTCP, DHCP, ARP, Zeroconf, Bonjour
	Security	Multi-user authority, HTTPS, IP Filtering, Privacy Zone
	Remote Access	ATVision IP Remote Management Software, Web Browser
	Max. Connection	10
	Compatible 3rd Party VMS	See link on www.atvideo.com
	Alarm Events	File upload via FTP and HTTP Notification via E-mail, HTTP and TCP
	Video Buffering	Pre and Post Alarm
	Motion Detection	Yes, max. 8 programmable windows
	Network Time Synchronization	Yes
	Micro-SD Card Recording	Yes, Continuous/Event
	Software Reset	Yes
	Factory Reset	Yes, Button/Web browser
	Auto Recovery	Yes
	Installation Tool	ATVision IP and SmartManager (included utility software)
	Upgrade	ATVision IP/ Web browser/SmartManager (included utility software)
GENERAL	Micro-SD Card	Micro-SDHC class 6 or above recommended (Max 32GB)
	Ethernet	RJ-45 10BASE-T/100BASE-TX
	Operating Temperature	-22° - 113°F (-30° - 45°C)
	Operation Humidity	0~90% (non-condensing)
	Power Consumption	12VDC 600mA(7W) / PoE 130mA(6.5W), With IR On; Power over Ethernet IEEE 802.3af Class2/3
	Environmental Rating	IP66
	External Dimension (Dia x H)	5.7 x 4.2in (146 x 106mm)
	Unit Weight	1.5lbs (.7kg)
	Conformity Certifications	FCC, CE

DIMENSIONS



ATVision IP Remote Management Software

Minimum System Requirements for ATVision IP Software

- Operating System: Microsoft Windows 7 (or 8) Professional/Enterprise/Ultimate
- CPU: Intel Core i7; RAM: 4GB; Ethernet Connection: 1Gbps
- Graphics Card: Gaming Rated, with 1GB at 1080p for Single Monitor; 2GB at 1080p for Multiple Monitors
- HDD's: 7200RPM and 64MB Cache; 1 separate HDD for Operating System and Software; and 1 (2TB) HDD for Recording (refer to IP storage calculator)

ACCESSORIES

CV-FLUSHMT	Flush Mount
DB243W2	Wall Mount
PDA5W	Pendant Mount
VDMWC	Wall and Ceiling Mount
VDSMR	Surface Mount Ring

