



ADVANCED
TECHNOLOGY
VIDEO

IP PRODUCT SERIES

>>> 2MP, TRUE DAY/NIGHT, WDR,
20x, IP, PTZ CAMERA

IP 20x PTZ CAMERA

IPSDV20X2

- > 2MP Full HD, 1920 x 1080 Resolution
- > Sony Starvis CMOS Sensor with Progressive Scanning for Sharper Video Motion Images
- > True Day/Night and WDR Functionality for all Lighting Conditions
- > Up to 256 Pre-set Positions, 8 Tours, 8 Patterns
- > High Speed PTZ Dome with 380°/sec Maximum Pan/Tilt
- > 20x, 4.7 - 94.0mm, Auto-Focus, Optical Zoom Lens with 16x Digital Zoom Function
- > Triple Streaming up to 60-ips @1080p Resolution, using H.264 and MJPEG Compression
- > Digital Noise Reduction 3DNR, Digital Image Stabilization (DIS) and Two-Way Audio
- > Video Content Analysis (Video Analytics) features such as Line and Field Detector
- > ATVision IP Remote Management Client Software for Windows and Mac and Mobile Applications for Apple and Android Operating Systems are included
- > Advanced Intelligent Health Monitoring (AIHM) Alerts User to Abnormal Conditions
- > A built-in Micro-SD Card Slot Enables Local Storage of Video
- > Pendant, Flush and Wall Mount Options Available
- > ONVIF Profile S Compliant
- > IP66 Rated Weather Resistant and IK10 Impact Resistant Housing with Built-in Heater
- > 12VDC / 24VAC / PoE Power Source Options

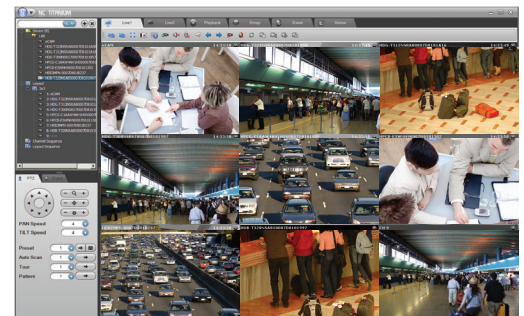
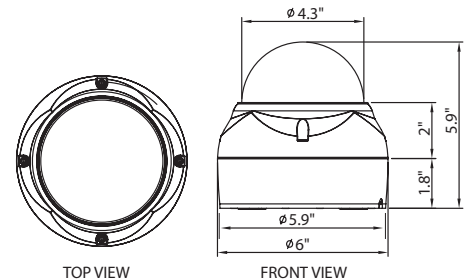


ONVIF | S

SPECIFICATIONS

MODEL	IPSDV20X2
CAMERA	Lens
	20x; 4.7 ~ 94.0mm
	Angle of View
	55.5° (H) ~ 3.0° (H)
	Image Sensor
	Type: 1/2.8" Sony Starvis CMOS; Pixels: 1,945(H) x 1,097(V)
	Min. Illumination
	Color: 0.35Lux; B/W: 0.13Lux @ 50 IRE
	Wide Dynamic Range
	120 dB
NETWORK	Day and Night Mode
	True D/N (Auto, Day, Night)
	Noise Reduction
	3DNR
	Digital Zoom
	16x
	Image Effect
	Flip (Digital), DIS, Defog, AE, AWB, BLC
	Tours / Patterns
	8 / 8
GENERAL	Pan Range & Speed
	360° Endless : Max. 380°/sec (Preset)
	Tilt Range & Speed
	-10° ~ 190° : Max. 380°/sec (Preset)
	Video Compression
	H.264 (Baseline, Main, High Profile), MJPEG
	Video Resolution
	1920x1080 ~ 320x240 @ Max. 60/50fps (NTSC/PAL)
	Video Streaming
	60/50fps (Dual Stream: H.264 x 1, MJPEG x 1) 30/25fps (Triple Stream: H.264 x 2, MJPEG x 1)
GENERAL	Audio
	G.711 Compression; 2-Way Streaming
	Video Content Analysis
	Line Detector, Field Detector, Face Detector, Tampering
	Motion Detection Area
	16 Programmable Area (Include Area 8, Exclude Area 8)
	Privacy Mask
	16 Programmable Zones
	Event Notification
	E-mail, FTP, Notification Server, XML Notification, Audio Alert, AIHM
GENERAL	Event Buffering
	FTP: Pre : 30sec, Post : 30sec, SD Record: Pre : 10sec, Post : 60sec
	Security
	Multi User Authority, IP Filtering, HTTPS, SSL
	Network Time Sync
	NTP Server, Synchronize Computer, Manual
	Micro-SD Card Recording
	Continuous / Event
	Protocols
	TCP/IP, UDP, IPv4/IPv6, HTTP, HTTPS, QoS, FTP, UPnP, RTP, RTSP, RTCP, DHCP, ARP, Zeroconf, Bonjour
GENERAL	Software
	Web, SmartManager, ATVision IP Client and Mobile
	Compatible 3rd Party VMS
	See link on www.atvideo.com
	Max. User Connection
	Live : 10 Users, Playback : 3 Users
	Audio
	1 Input, 1 Output (3.5mm Stereo Jack)
	Alarm
	4 Inputs, 1 Output (Terminal Block)
GENERAL	Ethernet
	RJ-45 (10/100Base-T)
	SD Card Slot
	SDHC(Max. 32GB)
	Operating Humidity
	0 ~ 90% RH (Non-condensing)
	Operating Temperature
	14°F ~ 122°F (-10°C ~ 50°C); with heater: -22°F (-30°C)
	Power Supply
	PoE(IEEE802.3af compliance, Class0), 12VDC, 24VAC (for heater use only)
GENERAL	Power Consumption
	250mA (12.0W) @ PoE, 1.0A (12.0W) @ 12VDC or 24VAC (with heater: 1.5A, 22W @ 24VAC)
	Dimensions
	6.0 x 5.9" (154 x 150mm)
	Weight
	3.5lb (1.6kg)
	Environmental
	IP66, IK10
	Conformity Certifications
	FCC, CE, MIC, UL

DIMENSIONS



ATVision IP Remote Management Software

Minimum System Requirements for ATVision IP Software

Operating System: Microsoft Windows 7 or Apple Mac 10.10
 CPU: Intel Core i5 processor
 RAM: 4GB
 Ethernet Connection: 100Mbps
 Graphics Card: Gaming Rated, with 2GB at 1080p Resolution;
 4GB at 4k resolution
 Hard Disk Drives: 7200RPM and 64MB cache

ACCESSORIES

- A-CM150 Corner Mount for VDMWC2
- A-CM151 Pole Mount for VDMWC2
- A-PEXM Ceiling Mount Bracket
- A-PFM Flush Mount
- A-PPDM Ceiling Pipe Mount Adapter
- DB243W2 Wall Mount
- KB5000N Keyboard Controller
- VDMWC2 Wall or Pendant Mount Kit

