



>>> 2MP RESOLUTION, TRIPLE STREAMING,
ON-BOARD STORAGE, IP MINI-CUBE CAMERA

IP MINI-CUBE CAMERA

- > Brilliant Video Quality with 2MP, 1600 x 1200 Resolution
- > Highly Efficient H.264 Video Compression which Drastically Reduces Bandwidth and Storage Requirements
- > Progressive Scanning for Sharper Video Motion Images
- > 2.6mm Wide Angle, Fixed Lens
- > Triple Video Streams Simultaneously, up to 15-ips, at 1200p Resolution using H.264 and MJPEG Compression
- > Passive Infrared (PIR) Motion Sensor and Two-Way Audio Capability (IPMC2MA model only)
- > White LED light for Illuminating the Scene upon an Event Occurrence (IPMC2MA model only)
- > Supports a Micro-SD Memory Card Slot for Local, Event Detection Recording
- > Minimum Scene Illumination 1Lux Color; 0.0Lux with LED on (IPMC2MA model only)
- > Backlight Compensation, 2D-DNR (Digital Noise Reduction) and Auto White Balance
- > Motion Detection (8 Windows), Privacy Masking (8 Windows) and FTP Image Upload
- > Up to 10 Simultaneous Connections through Remote Monitoring
- > View and Record up to 64 Cameras and View and Manage an Unlimited Number of ATV NVR Units with included ATVision IP Remote Management Software
- > ONVIF Compliant for Network Video Interoperability
- > PoE & 5VDC Power Options



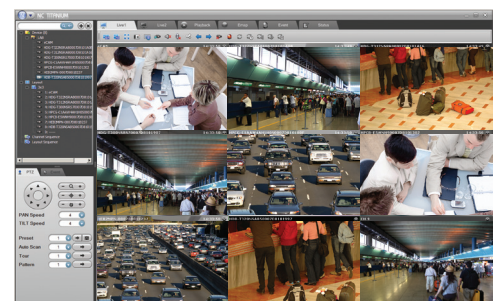
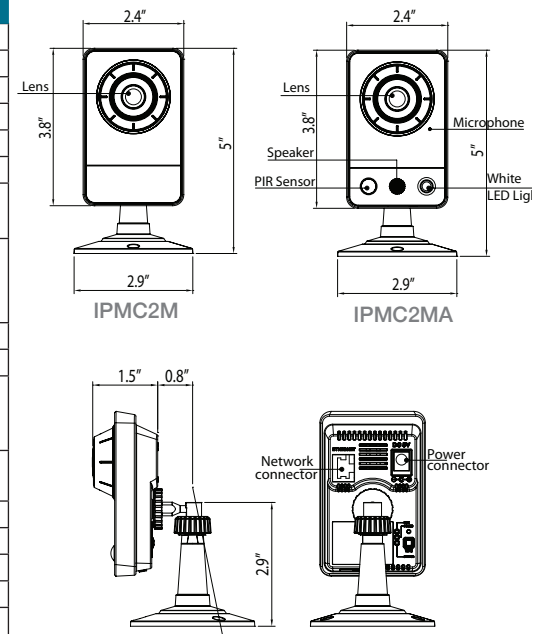
IP MINI-CUBE CAMERA

IP PRODUCT SERIES

SPECIFICATIONS

MODEL		IPMC2M - 2MP, Base Model IPMC2MA- 2MP, PIR Sensor, White LED, Audio (shown in photo)
C A M E R A	Image sensor	1/4" Progressive scan RGB CMOS
	Active Array	1600(H) x 1200(V)
R E C O R D E R	Lens	Fixed 2.6mm Lens, F1.8
	Angle of View	80.7°(H) x 58.7°(V) x 103.2°(D)
N E T W O R K	Min. Illumination	Color: 1Lux(LED Off), 0Lux (LED On, IPMC2MA model only)
	Shutter Speed	1/20,000 ~ 1/30 (Slow shutter 1/15, 1/8 and 1/4)
V I D E O	Video Compression	Motion JPEG; MPEG-4 Part2; H.264 (MPEG-4 Part 10); Profiles: H.264 HP, MP, and BP, MPEG-4 SP
	Video Streaming	Simultaneously H.264(or MPEG-4) and MJPEG Controllable Frame Rate and Bandwidth VBR/CBR H.264 and MPEG-4
R E S O L U T I O N	Video Resolutions	320x240 ~ 1600x1200
	Frame Rate	30fps @ 1280x720, 15fps @ 1600x1200
A U D I O	Audio (IPMC2MA model only)	Compression: G.711 64kbps Streaming: 2way Interface: Built-in Microphone & Speaker
	Protocol	TCP/IP, UDP, IPv4/v6, HTTP, HTTPS, QoS, FTP, uPnP, RTP, RTSP, RTCP, DHCP, ARP, Zeroconf, Bonjour, Hole Punching
S E C U R I T Y	Security	Multi-user authority, HTTPS, IP Filtering, Privacy Zone
	Max. Connection	10
C O M P A T I B L E	Compatible 3rd Party VMS	See link on www.atvideo.com
	API Programming Interface	API Supported, Open Platform Compatible: ONVIF
A L A R M	Alarm Triggers	Motion Detection, Manual Trigger, Built-in PIR Sensor(option) Audio Level Detection(option)
	Alarm Events	File upload via FTP and HTTP; Notification via E-mail, HTTP and TCP; Built-in LED activation(option); Audio alert activation(option)
V I D E O	Video Buffering	Pre and Post Alarm
	Motion Detection	Yes, max. 8 programmable zone
N E T W O R K	Network Time Synchronization	Yes
	SD Recording	Yes, Continuous/Event
S O F T W A R E	Software Reset	Yes
	Factory Reset	Yes, Button/Web browser
A U T O	Auto Recovery	Yes
	Installation Tool	Yes, SmartManager (included utility software)
U P G R A D E	Upgrade	Web browser, SmartManager
	Ethernet	RJ-45 10BASE-T/100BASE-TX
G E N E R A L	PIR Sensor (IPMC2MA model only)	Passive infrared (PIR) motion sensor with configurable sensitivity. Max range: 16ft (5M), 60°(H) x 20°(V)
	Illumination LED (IPMC2MA model only)	White Illumination LED: 1W
O P E R A T I O N	Operating Temperature	32°F - 104°F (0°C ~ 40°C)
	Operation Humidity	0~80% (non-condensing)
P O W E R	Power Consumption	DC5V 700mA / PoE 48V 73mA / 3.5W Power over Ethernet IEEE 802.3af Class0
	Dimensions (W x H x D)	2.4 x 3.8 x 1.5in (62 x 97 x 38.4mm) (without Stand)
U N I T	Unit Weight	0.17lbs (.075kg)
	Conformity Certifications	FCC, CE, MIC

DIMENSIONS



ATVision IP Remote Management Software

Minimum System Requirements for ATVision IP Software

- Operating System: Microsoft Windows 7 (or 8) Professional/Enterprise/Ultimate
- CPU: Intel Core i7; RAM: 4GB; Ethernet Connection: 1Gbps
- Graphics Card: Gaming Rated, with 1GB at 1080p for Single Monitor; 2GB at 1080p for Multiple Monitors
- HDD's: 7200RPM and 64MB cache; 1 separate HDD for Operating System and Software; and 1 (2TB) HDD for Recording (refer to IP storage calculator)