



ADVANCED
TECHNOLOGY
VIDEO

IP PRODUCT SERIES

>>> 2MP, MOTORIZED LENS, LICENSE PLATE CAPTURE (LPC), IP BULLET CAMERA



IP LPC CAMERA

IPLPC2RI

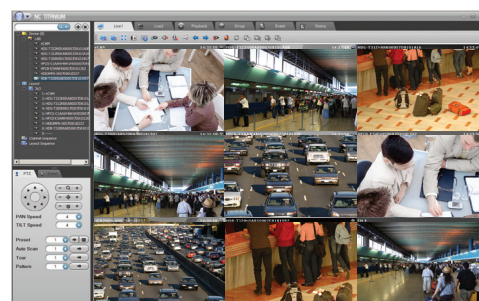
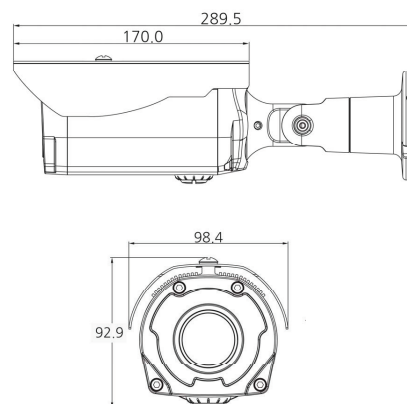
ONVIF | S

- > Designed to Capture License Plate Images at exceptional Video Quality with 2MP, Full HD, 1920 x 1080 Resolution
- > Sony Starvis CMOS Sensor with Progressive Scanning for Sharper Video Motion Images
- > Remote Focus and Zoom, Motorized 5.1 - 51mm Vari-focal Lens, eliminates need for Hands-on Fine Tuning
- > Triple Streaming up to 60-ips @1080p Resolution, using H.264 and MJPEG Compression
- > Powerful IR LED Lights for 0Lux Night-Time Operation up to 80ft Range
- > A built-in Micro-SD Card Slot enables Local Storage of Video
- > Advanced Intelligent Health Monitoring (AIHM) alerts User to Abnormal Conditions
- > Digital Noise Reduction (3D-DNR), Digital Image Stabilization (DIS) and 2-way Audio
- > Video Content Analysis (Video Analytics) features such as Line and Field Detector
- > Composite Video Output for Installation or Service Monitor
- > ATVision IP Remote Management Client Software for Windows and Mac and Mobile Applications for Apple and Android Operating Systems are included
- > ONVIF Profile S Compliant
- > IP66 Weather Resistant Rated Housing with Built-in heater and Through-Mount-Wiring (TCM)
- > PoE+ & 12VDC Power Option Capability

SPECIFICATIONS

MODEL	IPLPC2RI
C A M E R A	Image sensor
	Active Array
	Lens
	Angle of View
	Scanning Mode
	Noise Reduction
	Digital Zoom
	Image Effect
	Shutter Speed
	IR Illuminator
N E T W O R K	Compression
	Resolution
	Frame Rate
	Streaming
	Audio
	Video Contents Analysis
	Motion Detection Area
	Privacy Mask Zone
	Zoom Presets
	Event Notification
	Security
	Network Time Sync
	Micro-SD Card Recording
	Protocols
	Software
G E N E R A L	Max. User Connection
	Compatible 3rd Party VMS
	Video Output
	Micro-SD Card
	Ethernet
	Audio
	Alarm
	Operating Temperature
	Operation Humidity
	Power Supply / Consumption
	Environmental Rating
	External Dimension (WxHxD)
	Unit Weight
	Conformity Certifications

DIMENSIONS



ATVision IP Remote Management Software

Minimum System Requirements for ATVision IP Software

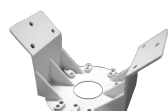
- Operating System: Microsoft Windows 7 (or 8) Professional/Enterprise/Ultimate
- CPU: Intel Core i7; RAM: 4GB; Ethernet Connection: 1Gbps
- Graphics Card: Gaming Rated, with 1GB at 1080p for Single Monitor; 2GB at 1080p for Multiple Monitors
- HDD's: 7200RPM and 64MB cache; 1 separate HDD for Operating System and Software; and 1 (2TB) HDD for Recording (refer to IP storage calculator)

* Maximum possible range in the best of conditions. Actual experience may vary depending on application and the environment.

ACCESSORIES

A-CM150 Corner Mount

A-CM151 Pole Mount



A-CM150



A-CM151



Typical Day



Typical Night