



>>> PROFESSIONAL ENVIRONMENTAL CAMERA HOUSING

CAMERA HOUSING **EHWMB**



- > Intended for use with all Full Body Analog and IP Cameras
- > Weatherproof, IP66 Rated Housing Seals Camera from all Outdoor Elements
- > Constructed of Die Cast, Extruded Aluminum
- > Clear Front Window does not affect Light-Level performance of Camera
- > Includes Sunshield, Heater and Blower for all Weather Conditions
- > Wall Mount features TMW - Through Mount Wiring
- > Hinged Side Door with Dual positive locking Clamps allows easy access to Camera
- > Reversible Camera Mounting Tray to Elevate low Profile Camera

CAMERA HOUSING EHWMHB

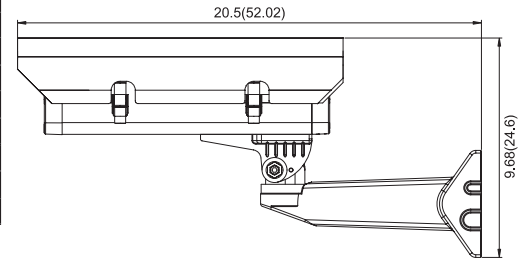
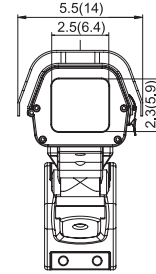
ACCESSORIES

SPECIFICATIONS

MODEL		EHWMHB
G E N E R A L	Construction	Die-cast and extruded aluminum Dimensions Side-hinged lid
	Window Size	0.11" thick tempered glass W x H 2.3 x 2.5in (59 x 64mm)
	Maximum Camera Size	Accommodates camera/lens combinations (including BNC) up to 3.1 x 3.2 x 11.4in (78 x 82 x 290mm)
	Cable Entry	TMW Through Mount Wiring
	Finish	Polyester powder coat
	Dimensions (W x H x D)	5.5 x 9.68 x 20.5in (140 x 246 x 520mm)
	Weight	9.15lb (4.15kg)
	IP Rating	IP66
	Temperature Range	-49°F ~ 122°F (-45°C ~ 50°C) with heater/blower on
	H E A T E R	Power Supply
Power Consumption		20W
Heater ON		Heater turns ON at 41°F (5°C)
Heater OFF		Heater turns OFF at 59°F (15°C)
B L O W E R	Power Supply	24VAC
	Power Consumption	3.4W
	Blower ON	Blower turns ON at 95° F (35°C)
	Blower OFF	Blower turns OFF at 68° F (20°C)

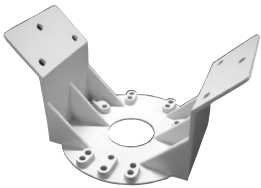
DIMENSIONS

Unit: inch(cm)

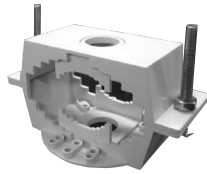


ACCESSORIES

A-CM150 Corner mount
A-CM151 Pole mount



A-CM150
Corner



A-CM151
Pole Mount