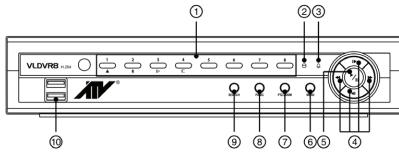


# VLDVR4/8 QUICK SETUP GUIDE

## FEATURES AND FUNCTIONS (1)

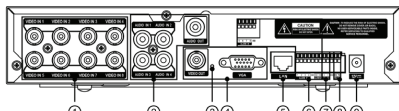
### FRONT PANEL



- ① Camera Buttons
- ② HDD LED
- ③ Alarm LED
- ④ Arrow Buttons
- ⑤ Play/Pause Button
- ⑥ Menu Button
- ⑦ PTZ/Zoom Button
- ⑧ Panic Button
- ⑨ Search Button
- ⑩ USB Port

\*Select camera buttons (1-8) to view individual cameras full screens.

### REAR PANEL



- ① Video Input
- ② Audio In/Out
- ③ Factory Reset Switch
- ④ Video Out
- ⑤ Network Port
- ⑥ Alarm In/Out
- ⑦ RS485 Port
- ⑧ RS232C Port
- ⑨ Power Cord Connector

### SYSTEM SETUP

1. After connecting the power cord, the unit will be operational in 60 seconds.

**\*NOTE: There is no record button on the unit. Please refer to the Configuring Record Settings section for the proper record settings.**

2. Press the "MENU" button or move the mouse pointer to the top of the screen and then select (Setup) in the Live Monitoring menu, enter the password then press the (Enter) button. There is no default password when logging in the admin user for the first time. To assure the secure management of the system, setting up a password is strongly recommended.

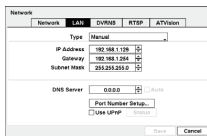
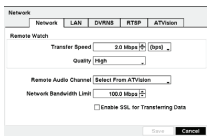


- Go to <System> <Information> to name the site location, assign a System ID number, select the language the screens are displayed in, display software version number, upgrade the software, show the System Log, show Event Status, display recorded time data, and clear all data.
- Go to <System> <Date/Time> to enter a new date and time.
- Go to <System> <User> to add and delete groups and users.
- Go to <System> <Wizard> to configure the system for basic operation.

**\*NOTE: Before powering down the DVR (or logging out the current user) highlight System Shutdown, press the (Enter) button (or pressing the "Menu" button) and confirm whether or not you want to shut the system down (or logging out the current user).**

### NETWORK SETUP

- Go to <Network> <Network> to set the transfer speed and remote quality to limit bandwidth used to the remote site.
- Go to <Network> <LAN> to select the type of network configuration first then set up LAN parameters for the selected network configuration.

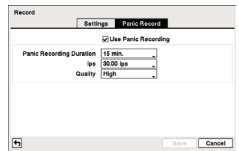
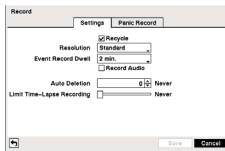


### CONFIGURING INPUT DEVICES



- Go to <Devices> <Camera> to turn On or Off each camera, assign camera titles and hide the video of covert cameras.
- Go to <Devices> <Audio> to select which camera you want associated with what audio input and enable audio out.
- Go to <Devices> <Alarm-Out> to establish a schedule and set titles for each alarm output from the DVR.
- Go to <Devices> <Display> to select what information will be displayed on the monitor and set up the main monitor.
- Go to <Devices> <Remote Control> to select a port and make correct settings for a remote control device.

### CONFIGURING RECORD SETTINGS

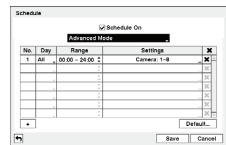
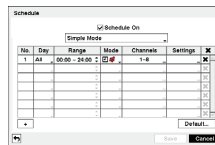


- Go to <Record> <Settings> to configure recording settings. Highlighting Recycle and pressing the (Enter) button toggles between On and Off. In the Recycle mode, the DVR records over the oldest video data once all available storage space has been used. When Recycle is turned off, the DVR stops recording once all available storage space has been used.
- Go to <Record> <Panic Record> to configure panic recording settings. Highlight Use Panic Recording and press the (Enter) button to toggle between On and Off. When setting to On, set the length of time of the duration, images per second and quality for panic recording.

### Recording Schedule

- Go to the <Record> <Schedule> to set up the recording schedule.
- Highlight Schedule On and press the (Enter) button to toggle between On and Off. In the Schedule On mode, the DVR records video based on the schedule established in the Schedule screen. When turning Schedule recording Off, you will be asked to confirm your decision. Panic recording will function even when Schedule is turned off.
- Select the schedule mode between Simple Mode and Advanced Mode first. Highlight the + and press the (Enter) button to add a schedule item, and highlight the box under the X heading and press the (Enter) button to delete the recording settings.

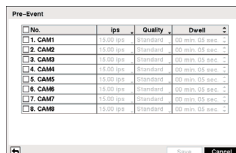
**\*NOTE: Refer to the User's Manual for each schedule mode for details.**



### Pre-Event Recording

- Go to <Record> <Pre-Event> to set up pre-event recording.
- You can turn individual cameras On or Off for pre-event recording and set the image speed, image quality, resolution and the amount of time to record prior to the event (dwell).

**\*NOTE: When the DVR is in the Time or Time & Event mode, it ignores the pre-event settings and follows the time settings.**



# VLDVR4/8 QUICK SETUP GUIDE

## FEATURES AND FUNCTIONS (2)

### EVENT ACTION SETTINGS

- Event
- Alarm-In
- Motion Detection
- Video Loss
- Video Blind
- Text-In Event
- System Event
- Event Status

- Highlight the Alarm-In, Motion Detection, Video Loss, Video Blind, Text-In in the Event menu and press the button. The Event Setting and Actions setup screens will appear.
- In each Event Actions screen, you can set the actions (Record, Alarm-Out, Notify and PTZ) the DVR will take whenever it senses alarm input, detects motion, loses video, detects video blind and senses text input.

- Highlight the System Event in the Event menu and press the button. The System Event setup screen will appear.
- In the System Event Actions screen, you can set the actions (Alarm-Out and Notify) the DVR will take when it detects system events.

### CLIP-COPY

The Clip-Copy screen can be used to copy video to an external USB hard disk drive or flash drive. The clip copy can be simply done by pressing the "SEARCH" button on the front panel for more than three seconds, or selecting Clip-Copy or A-B Clip-Copy in the Search menu.

**\*NOTE:** The Clip Copy feature requires the camera title or number along with the date and time of the recorded images to be copied. To view the copied images, remove the device from the DVR and connect it to your PC. On the PC access the device and select the image file name. The executable Clip Player software program will open automatically displaying playback controls for viewing the video clip.

### SEARCH AND PLAYBACK

- Press the "SEARCH" button on the front panel or select (Search Mode) in the Live Monitoring menu to enter the Search mode. If a user who has Search authority logs into the system, the user can view recorded images.
- Press the "MENU" button while in the Search mode or move the mouse pointer to the top of the screen to display the Search Menu. Select the type of search using the arrow buttons and press the button.



- ① Search
- ② Go To
- ③ Export
- ④ Camera Menu
- ⑤ Alarm
- ⑥ Panic
- ⑦ Data Source
- ⑧ Exit

### Event Search

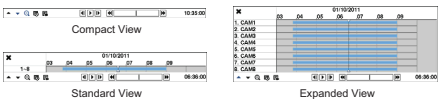
- Select <Event Log Search>, <Motion Search> or <Text-In Search> in the Search Menu.
- The event log list will be shown on the screen. Highlight the event you would like to see and press the button.

For more specific search conditions, select <Option> and enter search parameters then select <Search>. The search results will be displayed in each screen.

- Pressing the button will start playing the "event" video segment. Press the "SEARCH" button to return to live monitoring.

### Record Table Search

- Select <Search> <Record Table Search> in the Search Menu.
- Recording information about video images currently displayed on the screen displays on the recording status bar.



- Selecting the and located at the bottom switches to other view modes.
- Selecting displays eight hours (1-minute based), and selecting displays 24 hours (3-minute based) at once.
- Selecting located at the bottom displays the Calendar Search screen.
- Selecting located at the bottom displays the Search menu.

### Go To Search

- Select <Go To> in the Search Menu. Selecting <Go to the First> displays the first recorded image, selecting <Go to the Last> displays the last recorded image, and selecting <Go to the Date/Time> displays the Go to the Date/Time screen.

- Enter a specific date and time and select "OK" by pressing the button. The button and arrow buttons to review the video.