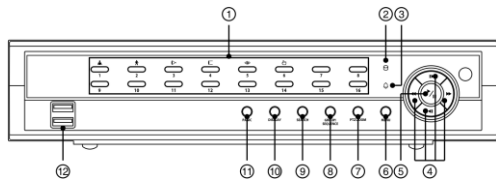


# ED2916 QUICK SETUP GUIDE

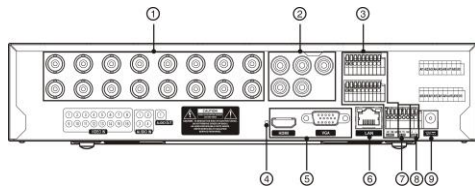
## Feature and Functions

### FRONT PANEL



- ① Camera Buttons
- ② HDD LED
- ③ Alarm LED
- ④ Arrow Buttons
- ⑤ Play/Pause Button
- ⑥ Menu Button
- ⑦ PTZ/Zoom Button
- ⑧ Group/Sequence Button
- ⑨ Search Button
- ⑩ Display Button
- ⑪ Panic Button
- ⑫ USB Connector

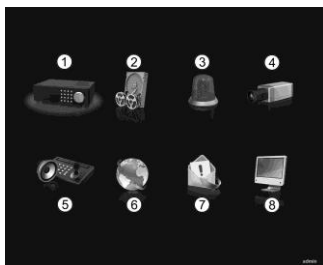
### REAR PANEL



- ① Video Input
- ② Audio In/Out
- ③ Alarm Input/Output
- ④ Factory Reset Switch
- ⑤ Video Out
- ⑥ Network Port
- ⑦ RS232 Port
- ⑧ RS485 Port
- ⑨ Power Cord Connector

### SYSTEM SETUP

- After connecting the power cord, the unit will be operational in 60 seconds.  
**\*Note: There is no record button on the unit. Please refer to the Record Setup section for the proper record settings.**
- Press the "Menu" button or move the mouse pointer to the top of the screen and then select (Setup) in the Live Monitoring menu, enter the password then press the button. There is no default password when logging in the admin user for the first time. To assure the secure management of the system, setting up a password is strongly recommended.



- ① System
- ② Record
- ③ Event
- ④ Camera
- ⑤ Device
- ⑥ Network
- ⑦ Notification
- ⑧ Display

### System Setup

- Go to "System -> General" to name the site location, assign a System ID number, select the language the screens are displayed in, display software version number, upgrade the software, import or export the DVR settings, show the System Log, clear all data and shut the system down.
- Go to "System -> Date/Time" to enter a new date and time.
- Go to "System -> User" to add and delete groups and users.
- Go to "System -> Storage" to display information about the DVR's storage devices.
- Go to "System -> System Event" to check the system events and set the actions the DVR will take when it detects system events.

**\*NOTE: Before powering down the DVR (or logging out the current user) highlight System Shutdown from the System – General menu and press the button, and confirm whether or not you want to shut the system down (or logging out the current user).**

### Record Setup

- Go to "Record -> General" to configure recording settings. Highlighting Recycle and pressing the button toggles between On and Off. In the Recycle mode, the DVR records over the oldest video data once all available storage space has been used. When Recycle is turned off, the DVR stops recording once all available storage space has been used.
- Go to "Record -> General" to configure recording settings. Highlight Use Panic Recording and press the button to toggle between On and Off. When setting to On, set the length of time of the duration, images per second and quality for panic recording.
- Go to "Record -> Schedule" to program the DVR to record only during certain times based on time, day of the week, and holidays. Highlight Schedule On and press the button to toggle between On and Off. In the Schedule On mode, the DVR records video based on the schedule established in the Schedule screen. When turning Schedule recording Off, you will be asked to confirm your decision. Panic recording will function even when Schedule is turned off.
- Select the schedule mode between Simple Mode and Advanced Mode first. Highlight the + and press the button to add a schedule item, and highlight the box under the X heading and press the button to delete the recording settings.

**\*NOTE: Refer to the User's Manual for each schedule mode details.**



- Go to "Record -> Pre-Event" to set up pre-event recording. You can turn individual cameras On or Off for pre-event recording and set the image speed, image quality, resolution and the amount of time to record prior to the event (dwell). When the DVR is in the Time or Time & Event mode, it ignores the pre-event settings and follows the time settings.

### Network Setup

- Go to "Network -> General" to set the transfer condition for remote watch, limit bandwidth used to the remote site and configure the WebGuard service.
- Go to "Network -> LAN" to select the type of network configuration first then set up LAN parameters for the selected network configuration.



- Go to "Network -> WebGuard" to set the DVR accessible from a browser.

### Event Setup

Go to "Event -> Motion, Alarm-In, Video Loss, Video Blind and Text-In" to set up each event and set the actions the DVR will take when it detects the event.

# ED2916 QUICK SETUP GUIDE

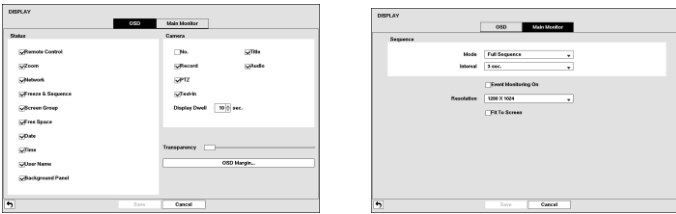
## Features and Functions

### Device Setup

- Go to "Device -> Audio" to set up audio input and output. The DVR can record up to 16 audio inputs.
- Go to "Device -> Alarm-Out" to change the settings and establish a schedule for each alarm output from the DVR.

### Display Setup

- Go to "Display -> OSD" to select what information will be displayed on the monitor.
- Go to "Display -> Main Monitor, Secondary Monitor and Spot Monitor" to set up each monitor. See the following monitor connections examples.



### Camera Setup

- Go to "Camera -> General" to turn the camera on and off and change the title of each camera.
- Go to "Camera -> PTZ" to set up the PTZ cameras.

### Event Search

Move to "Search – Event Log Search, Motion Search and Text-In Search" from the Search menu to select video from the event log, select motion events and select text input strings. For more specific search conditions, select "Option" and enter search parameters then select "Search". The search results will be displayed in each screen.



### LIVE MONITORING



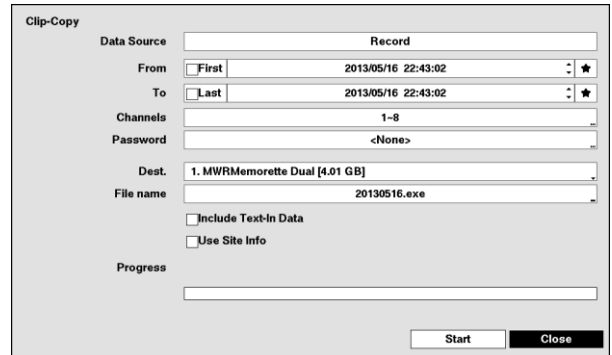
- 1 Login/Logout
- 2 Display
- 3 Previous Group
- 4 Next Group
- 5 Freeze
- 6 Alarm
- 7 Panic
- 8 Sequence
- 9 Camera Menu
- 10 Search
- 11 Setup
- 12 Status

While in the live monitoring mode, pressing the **MENU** button or moving the mouse pointer to the top of the screen displays the Live Monitoring menu. Pressing the **MENU** button again hides the menu. You can navigate through menus and items by pressing the arrow buttons.

### Go To Search

Move to "Search – Go To" from the Search menu. Selecting "Go to the First" displays the first recorded image, selecting "Go to the Last" displays the last recorded image, and selecting "Go to the Date/Time" displays the Go to the Date/Time screen.

### CLIP COPY



The Clip-Copy screen can be used to copy video to an internal DVD RW, or external USB hard disk or flash drives. Move to "Export – A-B Clip-Copy or Clip-Copy" from the Search menu. The clip copy can be simply done by pressing and holding the **MENU** button for three or more seconds.

**\*NOTE: The Clip Copy feature requires the camera title or number along with the date and time of the recorded images to be copied. To view the copied images, remove the disk from the DVD RW device and insert it into any PC with a CD or DVD reader. On the PC access the CD or DVD drive device and select the image file name. The executable Clip Player software program will open automatically displaying playback controls for viewing the video clip.**

### SEARCH AND PLAYBACK



- 1 Login/Logout
- 2 Display
- 3 Previous Group
- 4 Next Group
- 5 Freeze
- 6 Alarm
- 7 Panic
- 8 Sequence
- 9 Camera Menu
- 10 Search
- 11 Setup
- 12 Status
- 13 Exit

- Press the **SEARCH** button on the front panel or select (Search) in the Live Monitoring menu to enter the Search mode.
- Press the **MENU** button while in the Search mode or move the mouse pointer to the top of the screen to display the Search Menu.