



TIVE

iOS Mobile Viewer Illustration



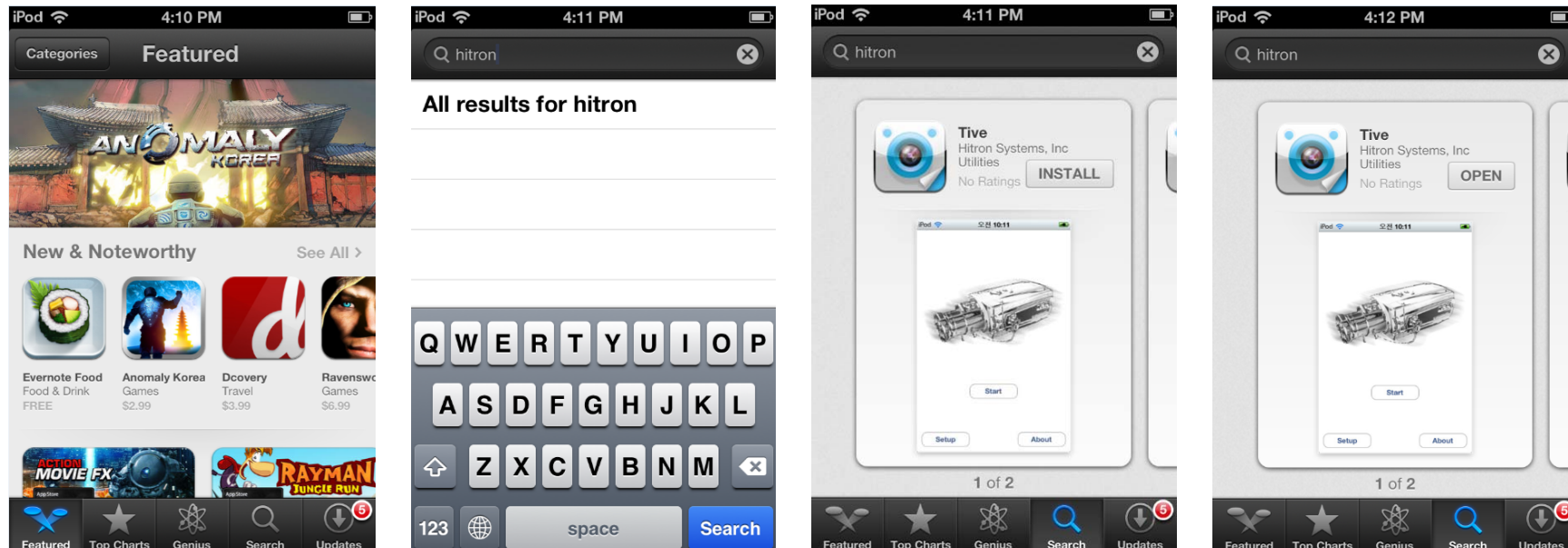


TIVE iOS Mobile version 1.2.1

Manual version 1.0.0



Installation



Main Functions of TIVE

- Add / Edit / Delete Network Devices, Group and Recorder
- Real time video display and Audio
- Control Network devices
- Search and Playback Video & Audio recorded in the Network devices



Device Management

Device List

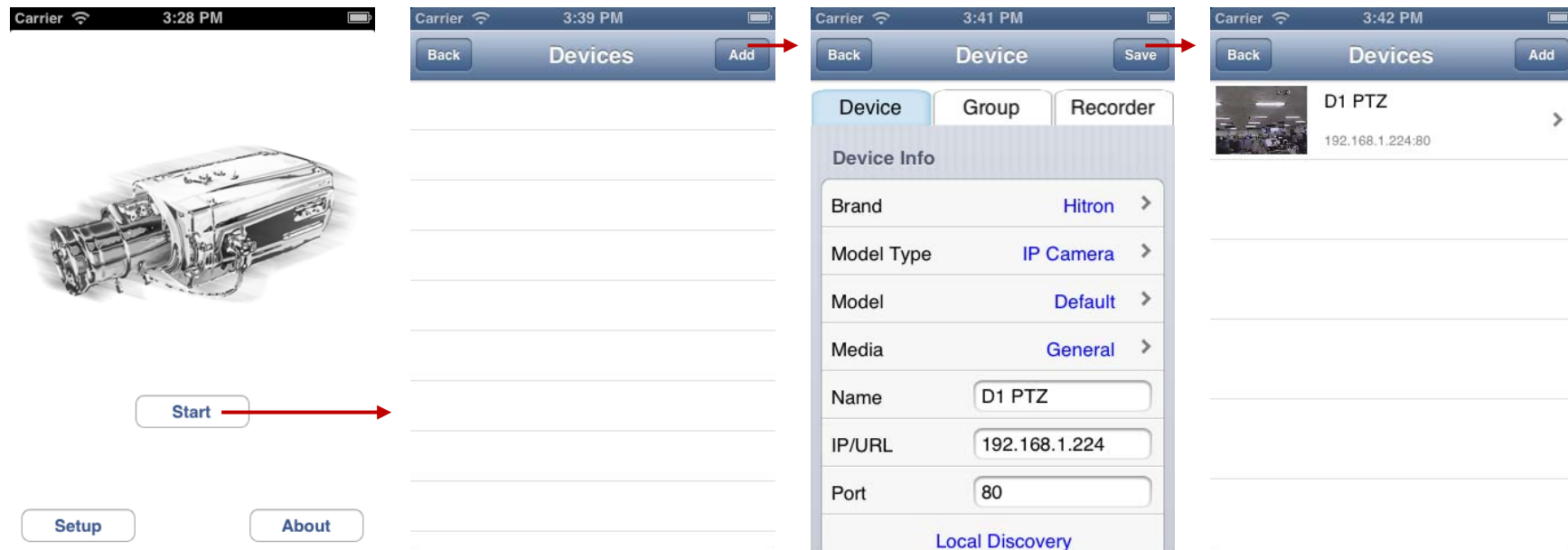
Display Network Device, Group and Recorder information

- Network Device : Thumbnail image, Device name, IP Address & Port
- Group : Thumbnail image, Group name, Max channel number
- Recorder: Thumbnail image, Recorder name, IP Address & Port

(Thumbnail: the last still image of real time video)

Add, Edit & Delete Device

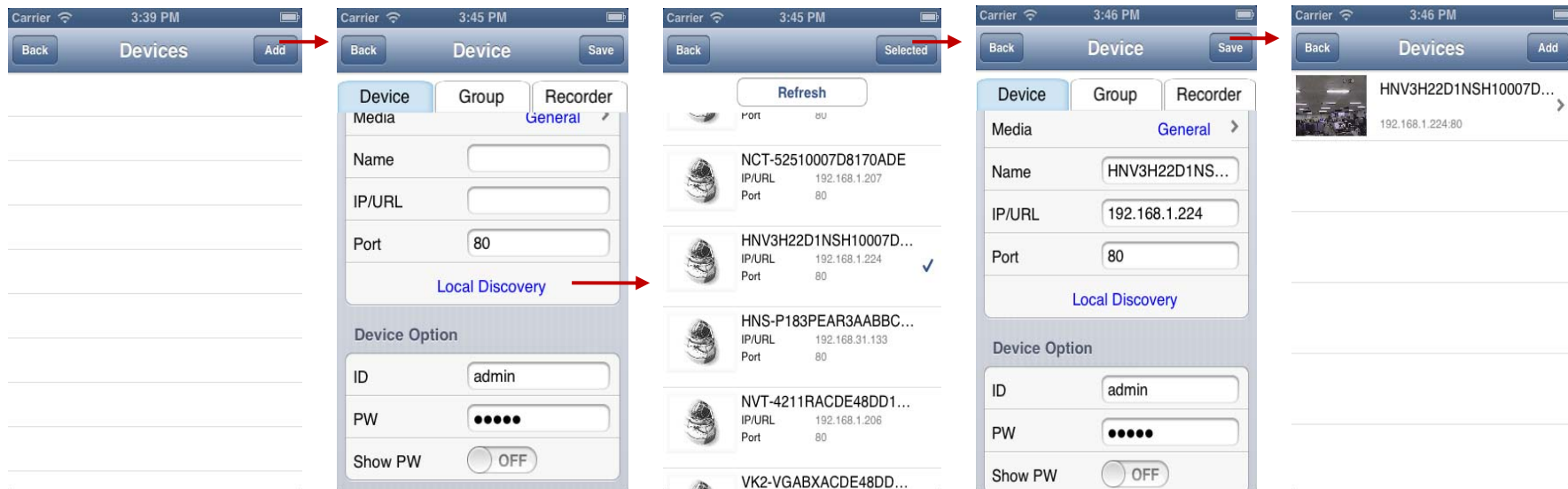
(1) Add : Device can be added after selecting Model Type, Model & Media and inputting Name, IR/URL & port number.





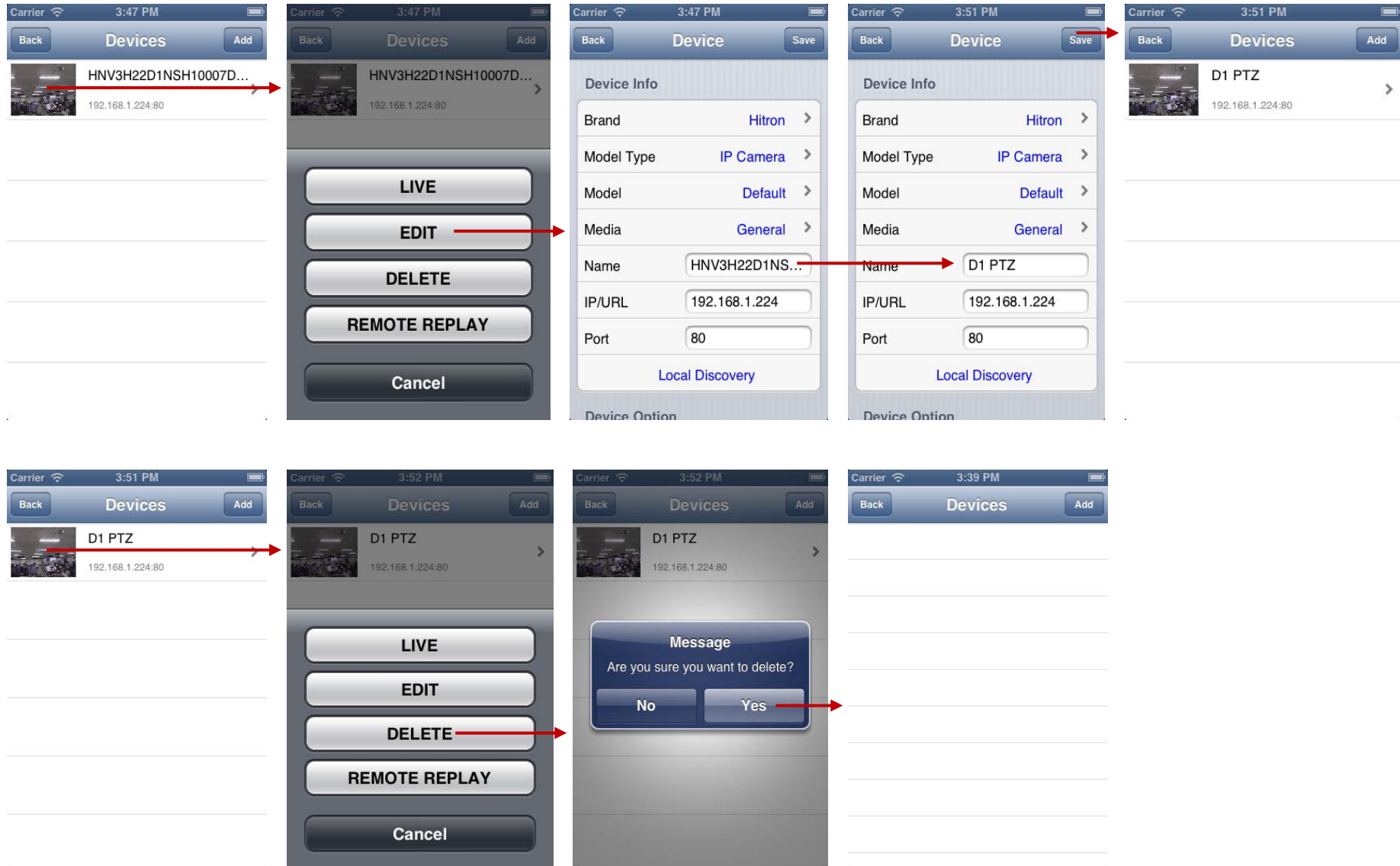
Local Device Discovery

Network Device in the LAN(Local Area Network) is searched, and the selected Device data can be automatically imported to the Device Info menu.





- (2) Edit & Delete : Device information can be edited or the device can be deleted from the quick menu that pops up by touching the thumbnail in the Device List.





Add, Edit & Delete Group

(1) Add : Input and save a new Group information

Input Group name and select the wanted number of devices in the group, select Devices up to the selected max channel number.

(Max 24 channels can be selected in a Group, and the Devices can be added one by one or up to the max channel number at one time.)

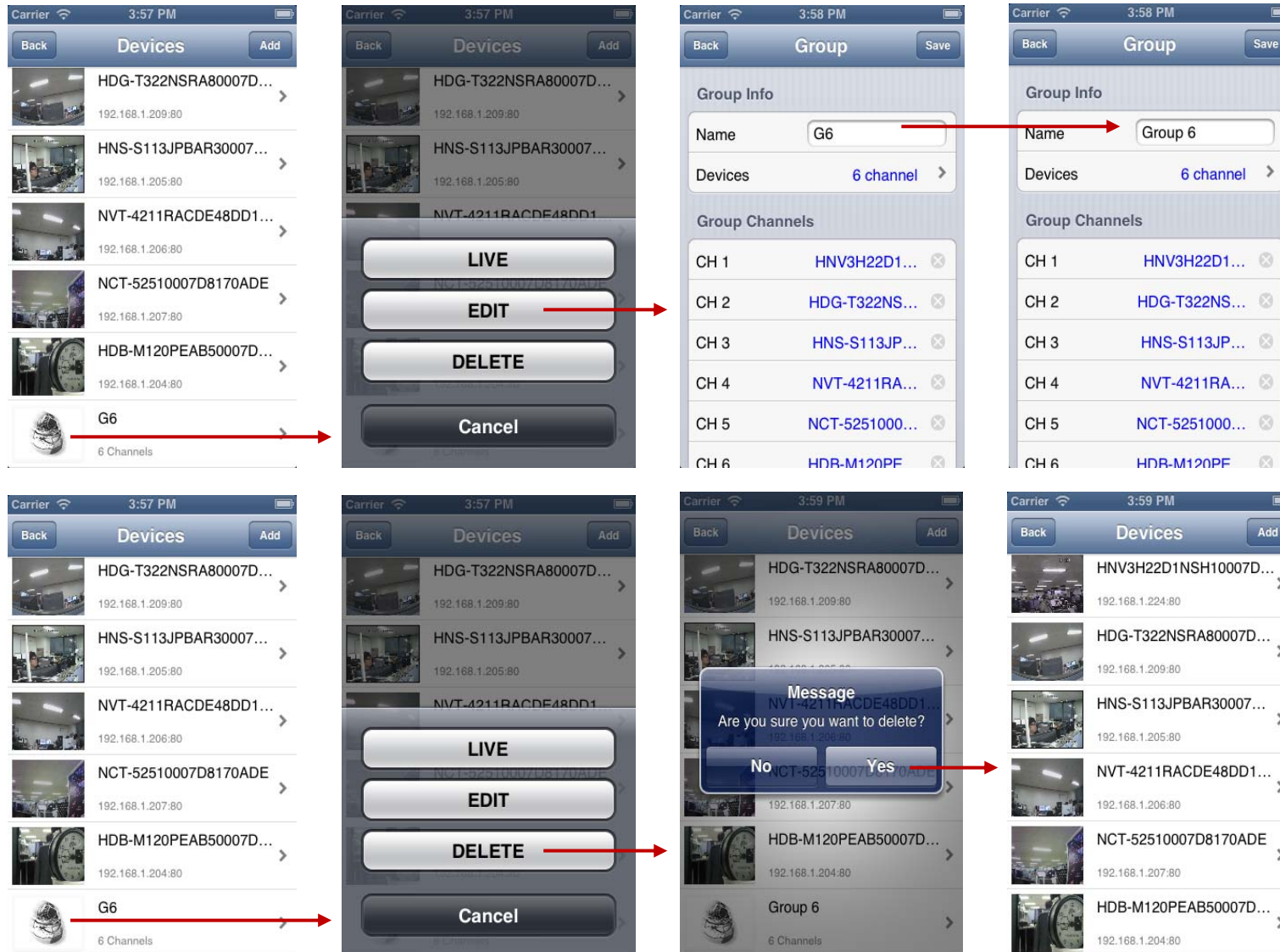
After adding the max number of Devices, touch "Save", then the newly added Group is to be displayed in the Device List.

The sequence of screenshots illustrates the steps to add a new group:

- Devices List:** Shows a list of available devices with their IP/URL and Port.
- Device Info:** Selects a device (e.g., HNV3H22D1NSH10007D...) and shows its details like Brand (Hitron), Model Type (IP Camera), and Port (80).
- Group Creation:** Taps the 'Add' button to create a new group. The 'Group Info' screen shows the group name 'G6' and the number of devices '2 channel' (later changed to 6).
- Group Channels:** Selects the number of channels (6) and chooses specific devices for each channel (CH 1 to CH 6).
- Group List:** Shows the newly created group 'G6' in the list of groups.
- Group Info (G6):** Shows the details of the newly created group, including the name 'G6' and the number of channels '6 channel'.
- Group Channels (G6):** Shows the list of channels for the group 'G6', with each channel assigned a specific device.
- Devices List (Final):** Shows the final state where the newly created group 'G6' is listed among the other devices.



- (2) Edit & Delete : Group information can be edited or the Group can be deleted from the quick menu that pops up by touching the thumbnail in the Device List.

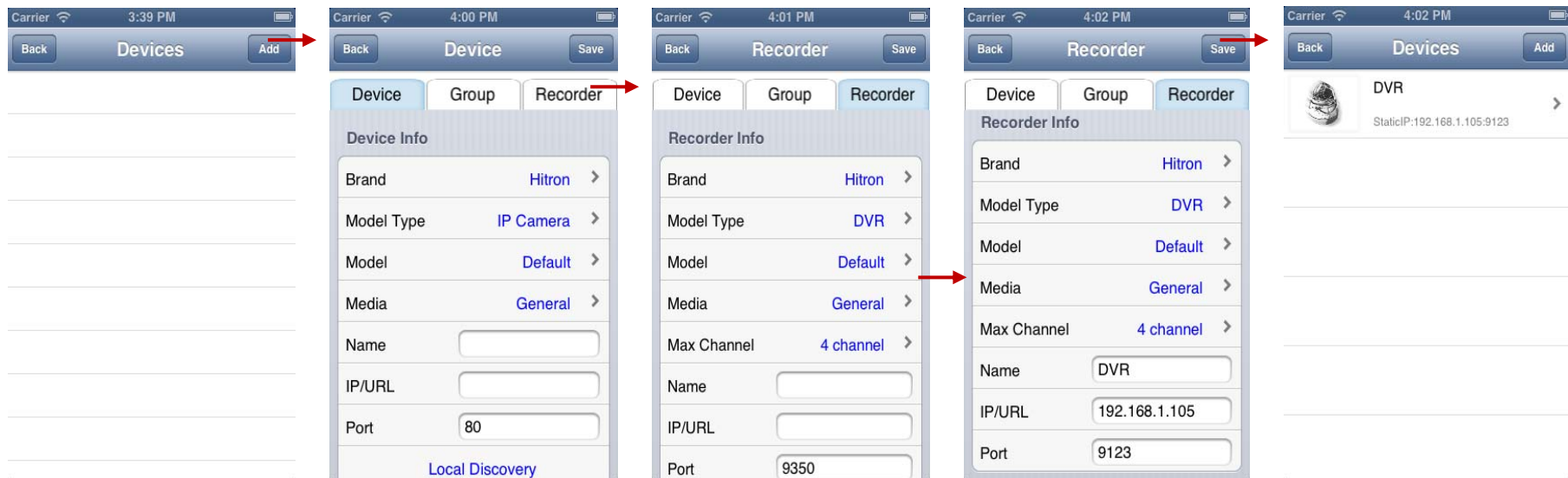




Add, Edit & Delete Recorder

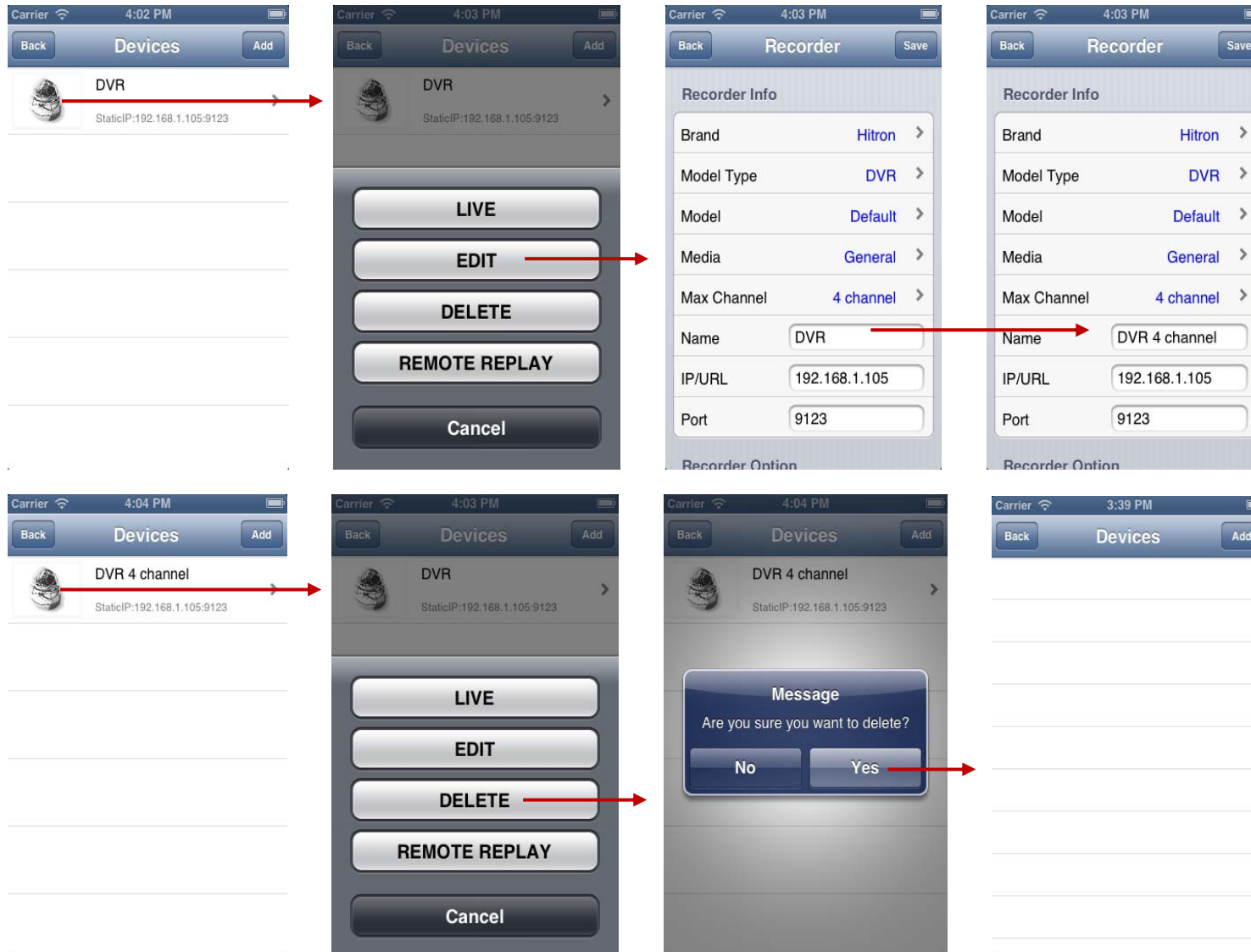
(1) Add : Input and save a new Recorder information

Input Recorder name, IP/URL & port, select Model Type, Model, Media & Max Channel, and save to add the Recorder to the Device list.





- (2) Edit & Delete : Recorder information can be edited or the Recorder can be deleted from the quick menu that pops up by touching the thumbnail in the Device List.

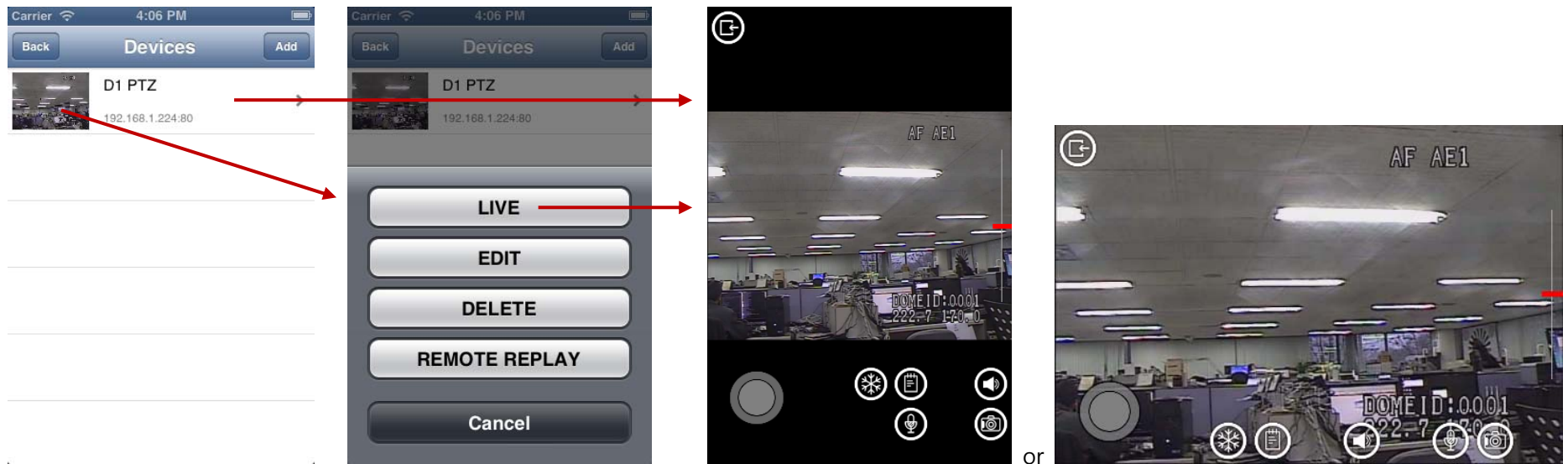




Live View

Device Live View

Real time video can be displayed by touching a wanted Device in the Device List or by touching LIVE in the quick men.





Digital PTZ

Digital PTZ can be executed in the Live View mode by double-touching the screen or by multi-touch with two fingers.





Functions

Function icons are appeared by touching the Live View screen.

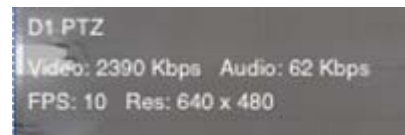
- Freeze



- Status



Display Device Name, Video/Audio traffic, fps, and resolution.





- Speaker



Audio can be played.



- Mic



Audio can be transferred to the Device.





- Snapshot

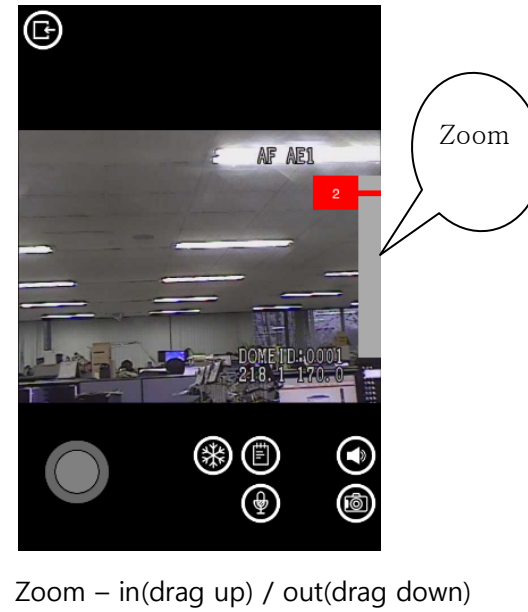
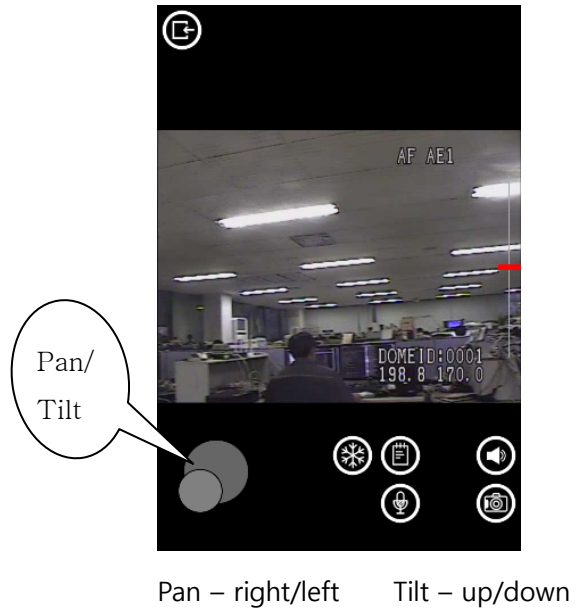


A still image of the Device is to be saved in the Mobile device storage.





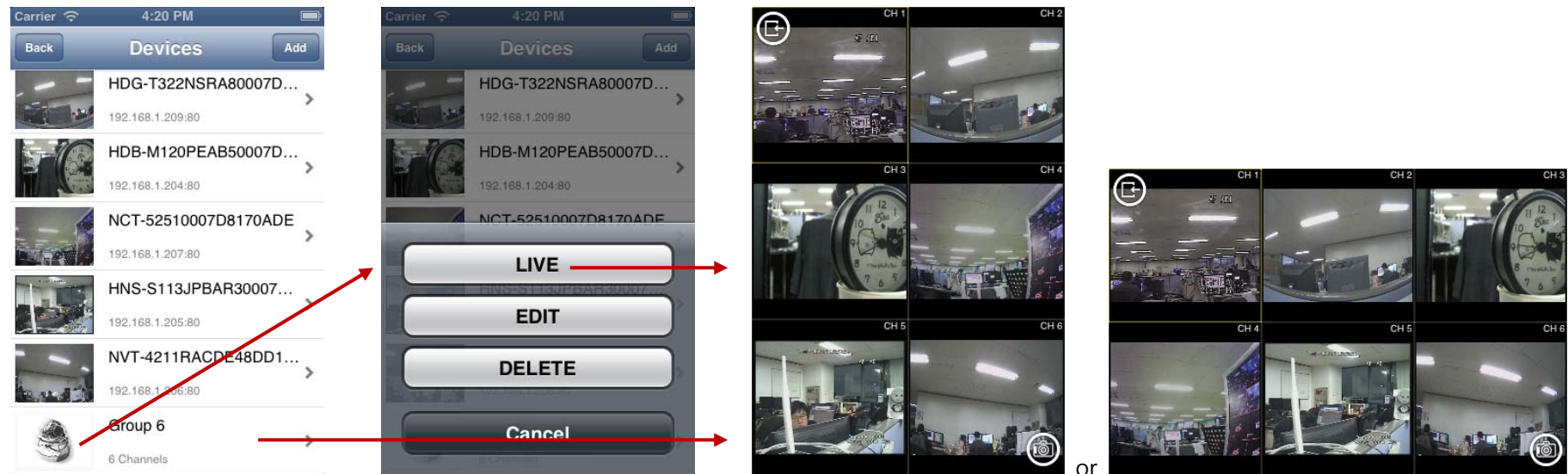
● PTZ





Group Live View

The live view of Network Devices registered in a specific Group can be displayed.





- A Specific Device's Live View to Full Screen

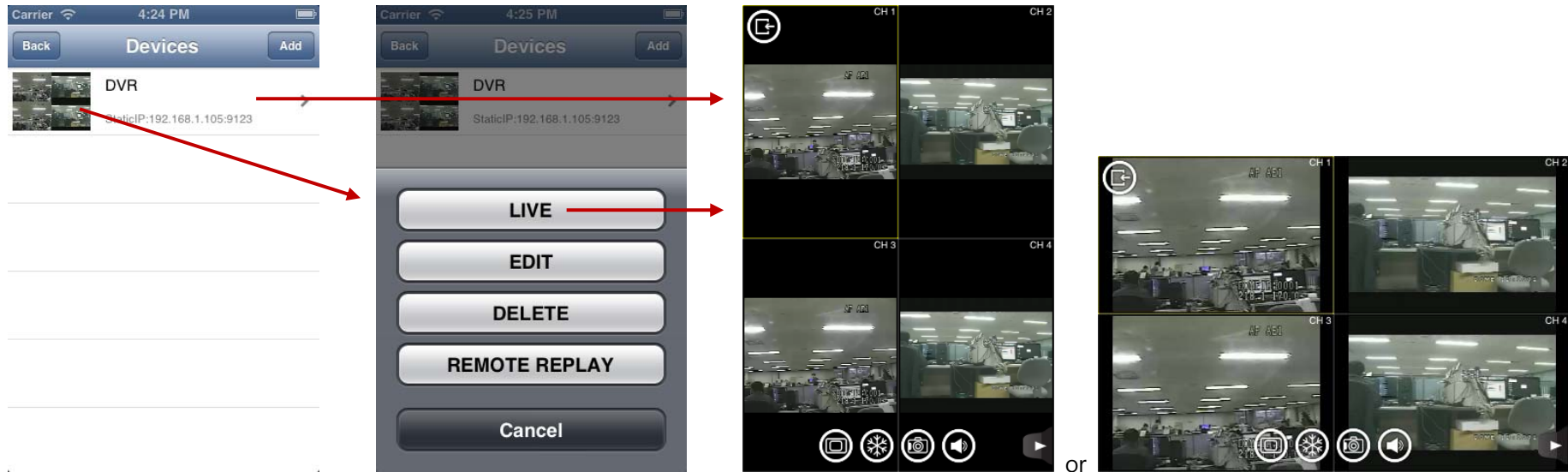
One of the Devices in a Group can be displayed in full screen by double-touching the screen.





Recorder Live View

The live view of Network Devices registered in a specific Recorder can be displayed.





- Functions with Recorder View

- Change display mode



Display mode can be changed from single channel up to 16 channels based on the selected Recorder max channel.



- Freeze



- Speaker

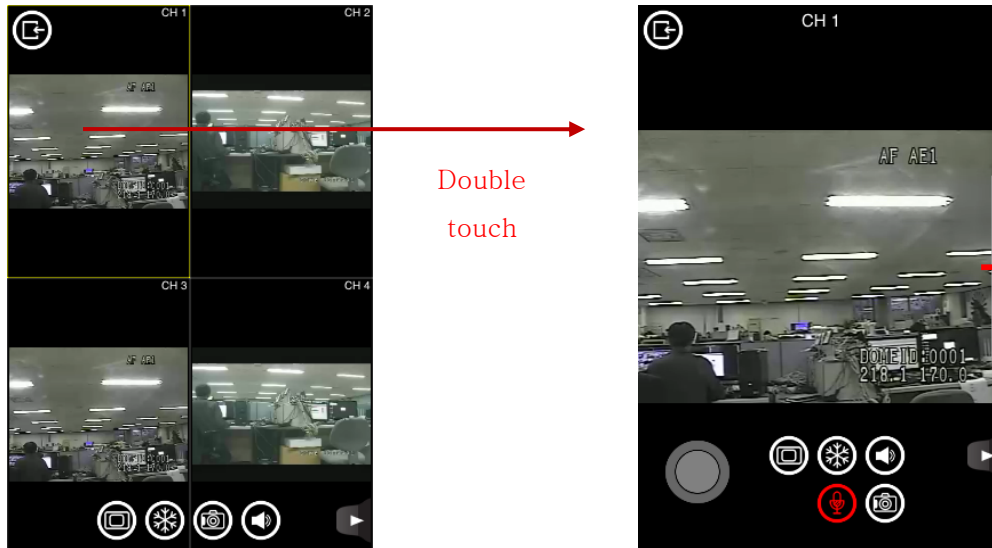




- Mic



Audio can be transferred to a specific Device registered in a Recorder after enabling single screen of the specific Device.



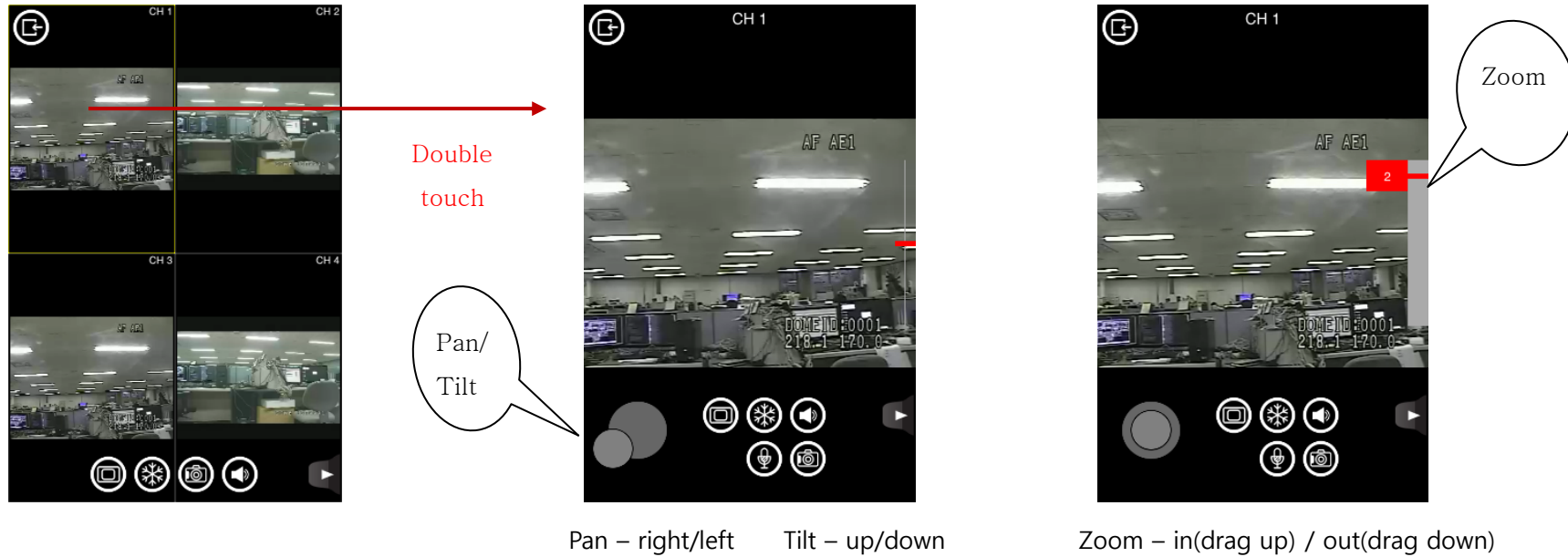
- Snapshot





- PTZ

PTZ can be controlled for a specific Device registered in a Recorder after enabling single screen of the specific Device.



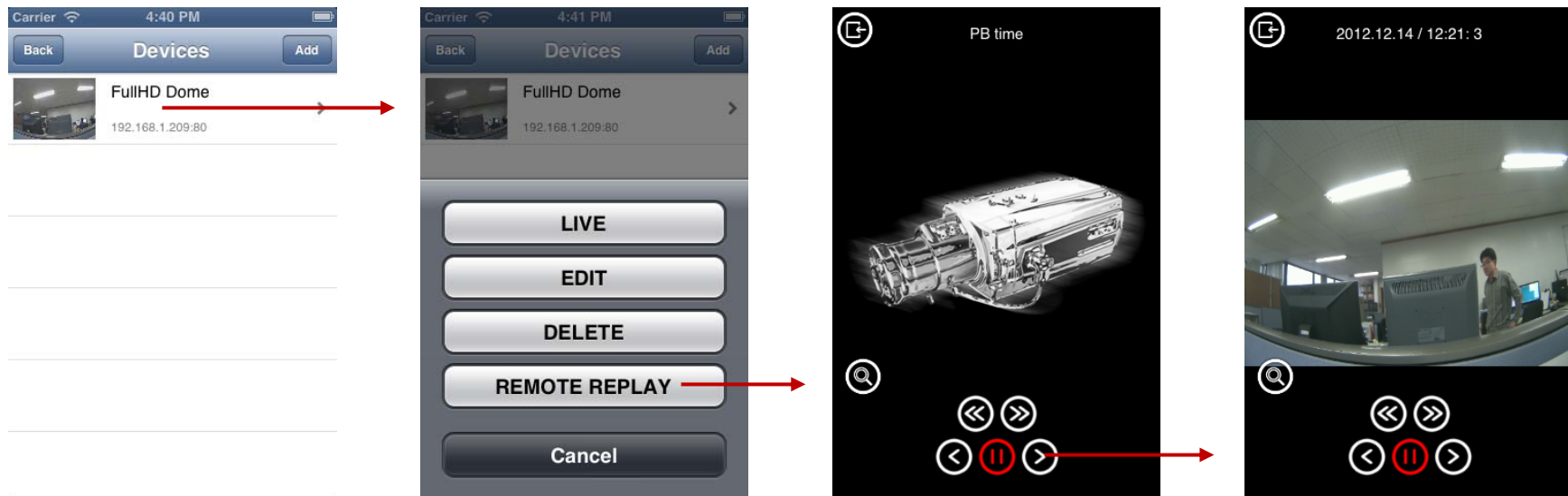


Remote Replay

Device Remote Replay

The recorded Video & Audio in the selected Network Device can be searched and played. This function can be executed only for the Network Device that has a built-in storage media

- Replay View

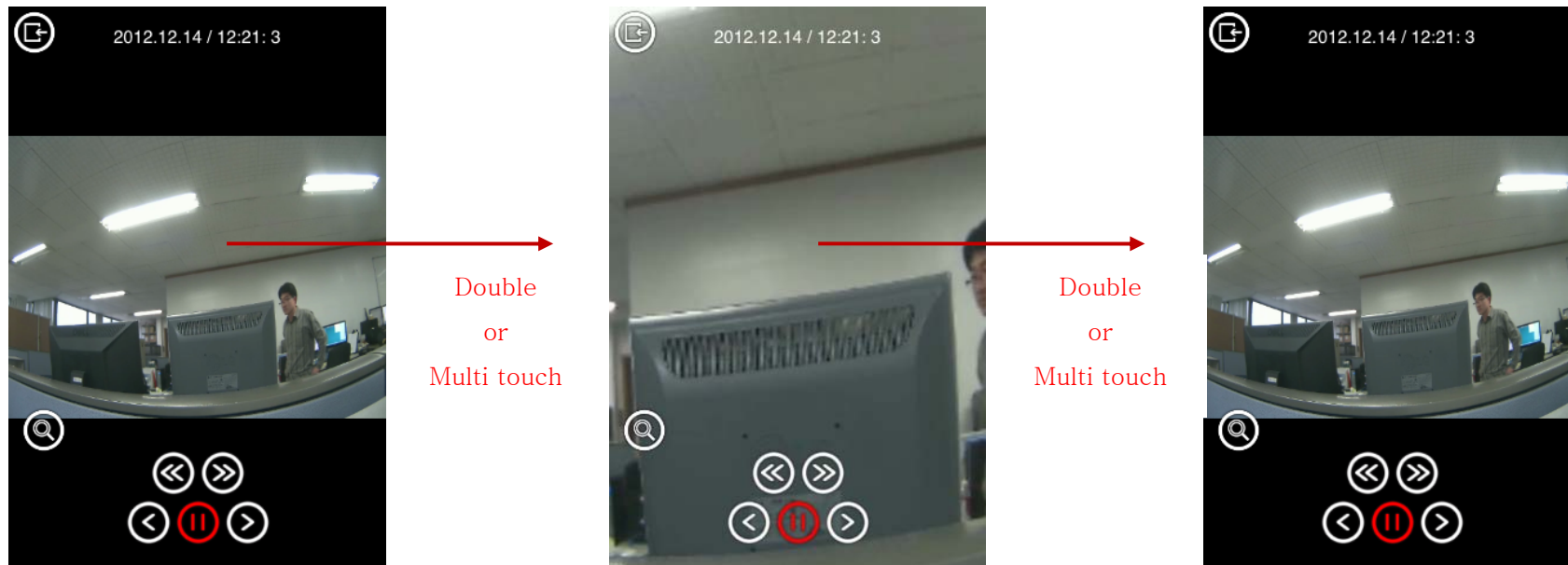


The last recorded video is to be played. If there is no video, the recorded video can be found with Search function.




- Digital PTZ during Playback

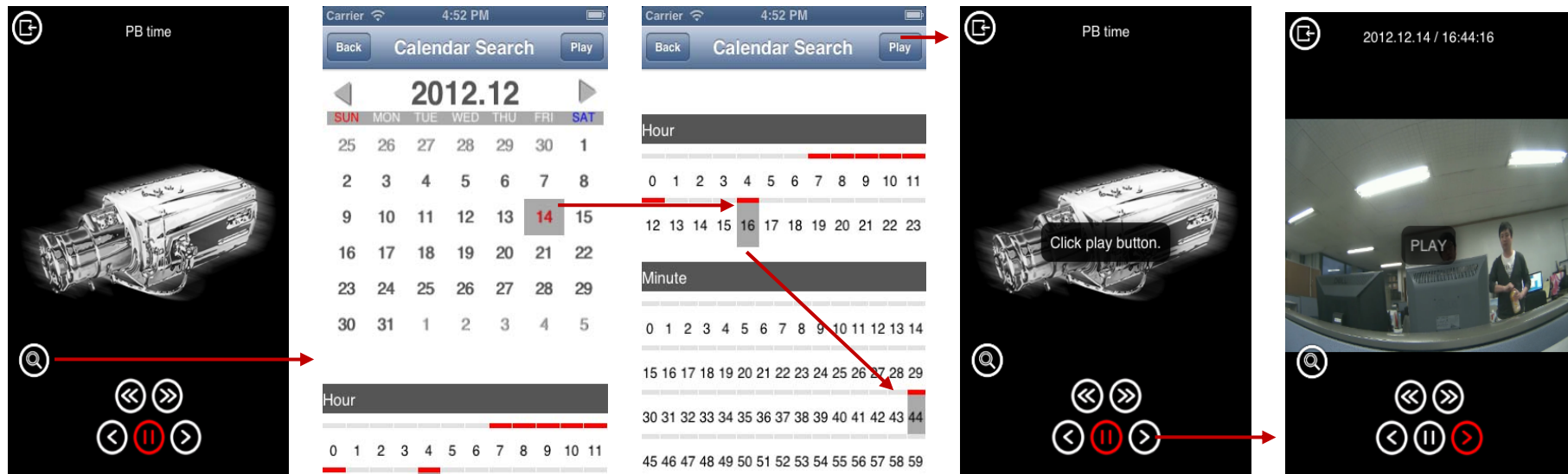
Digital PTZ can be executed in the Live View mode by double-touching the screen or by multi-touch with two fingers.





- Calendar Search

The recorded video can be searched by selecting date, hour and minute after touching  button.





- Playback Control



Fast Backward Play



Backward Play



Pause



Forward Play



Fast Forward Play





Recorder Remote Replay

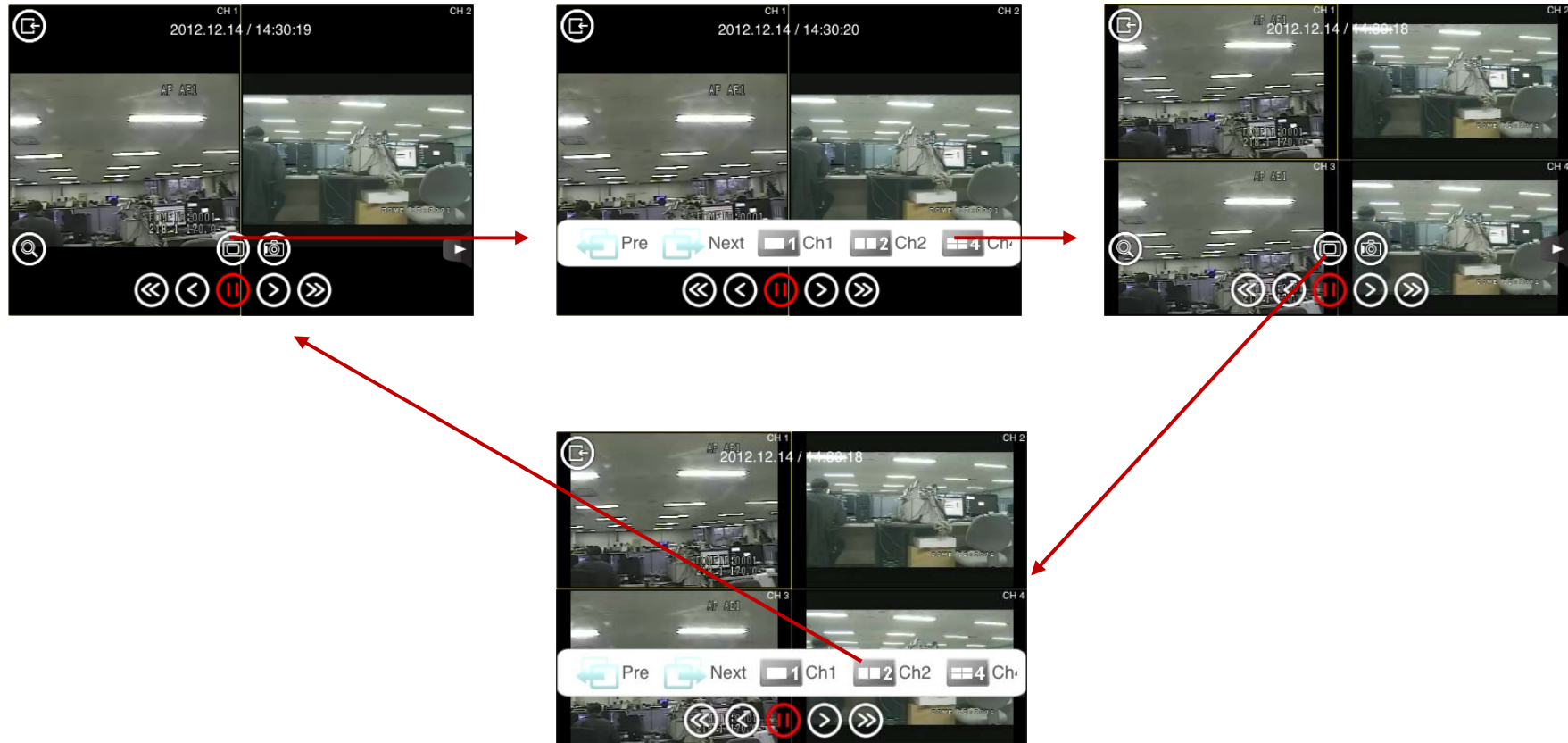
The recorded Video & Audio in the selected Recorder can be searched and played.

- Replay View





- Change Display Mode






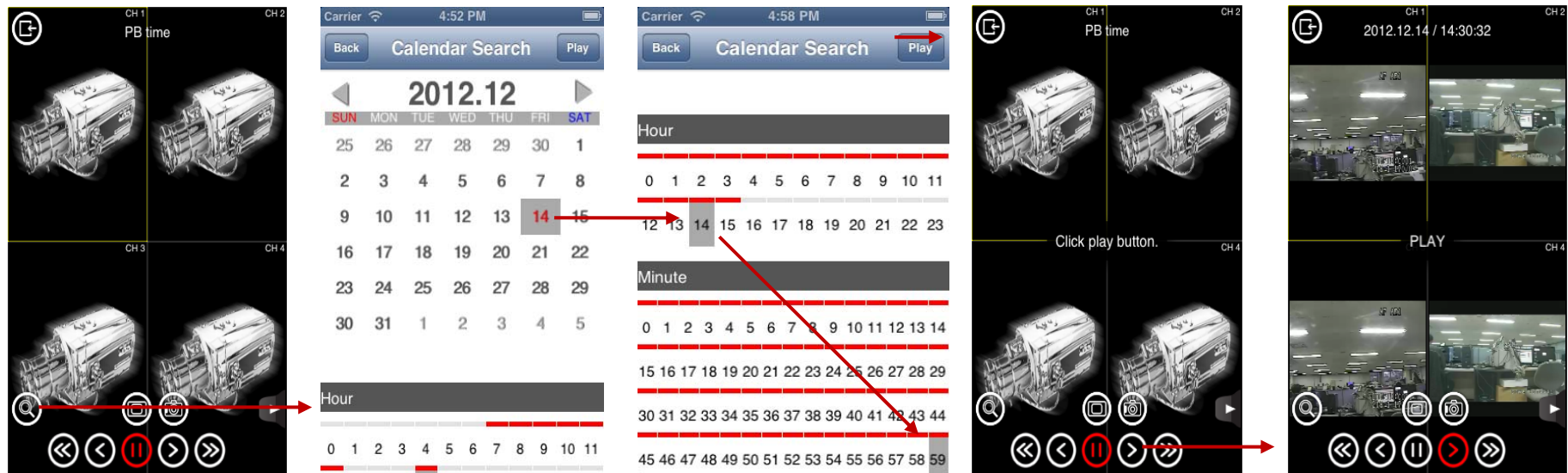
- Digital PTZ



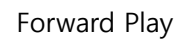
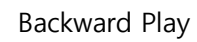


- Calendar Search

The recorded video can be searched by selecting date, hour and minute after touching  button.



- Playback Control





Setup

Export

(1) Export all data

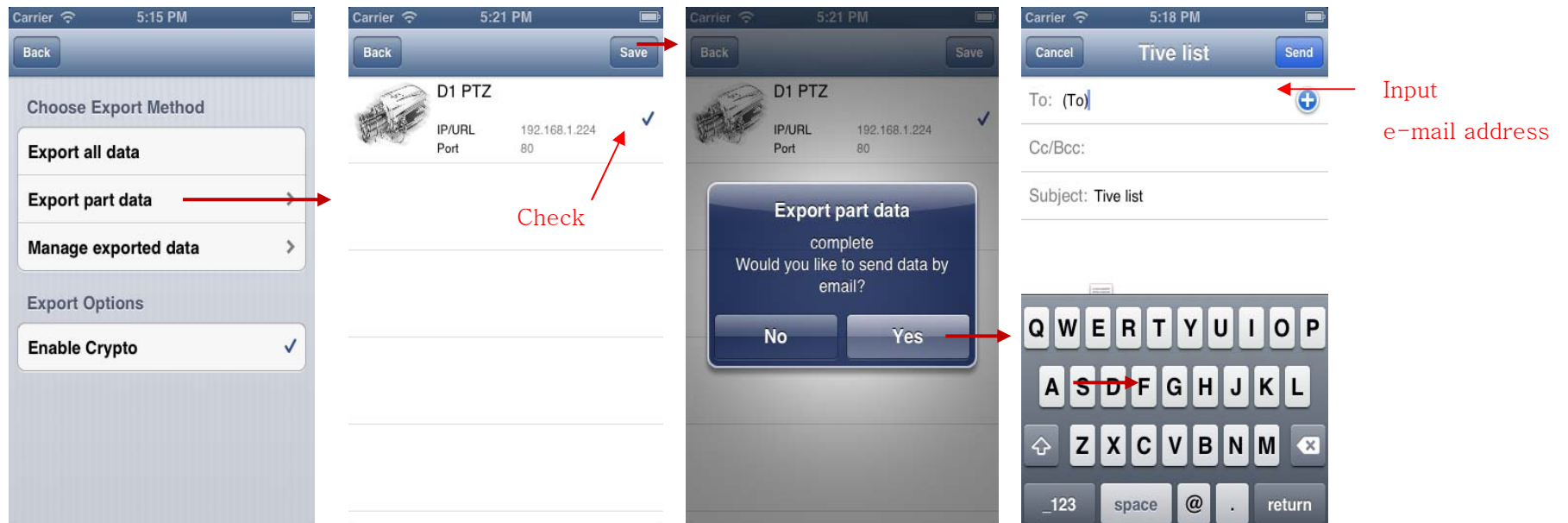
All the registered Network Devices' data can be exported to the selected e-mail address, and the exported data is automatically saved in the mobile storage.





(2) Export part data

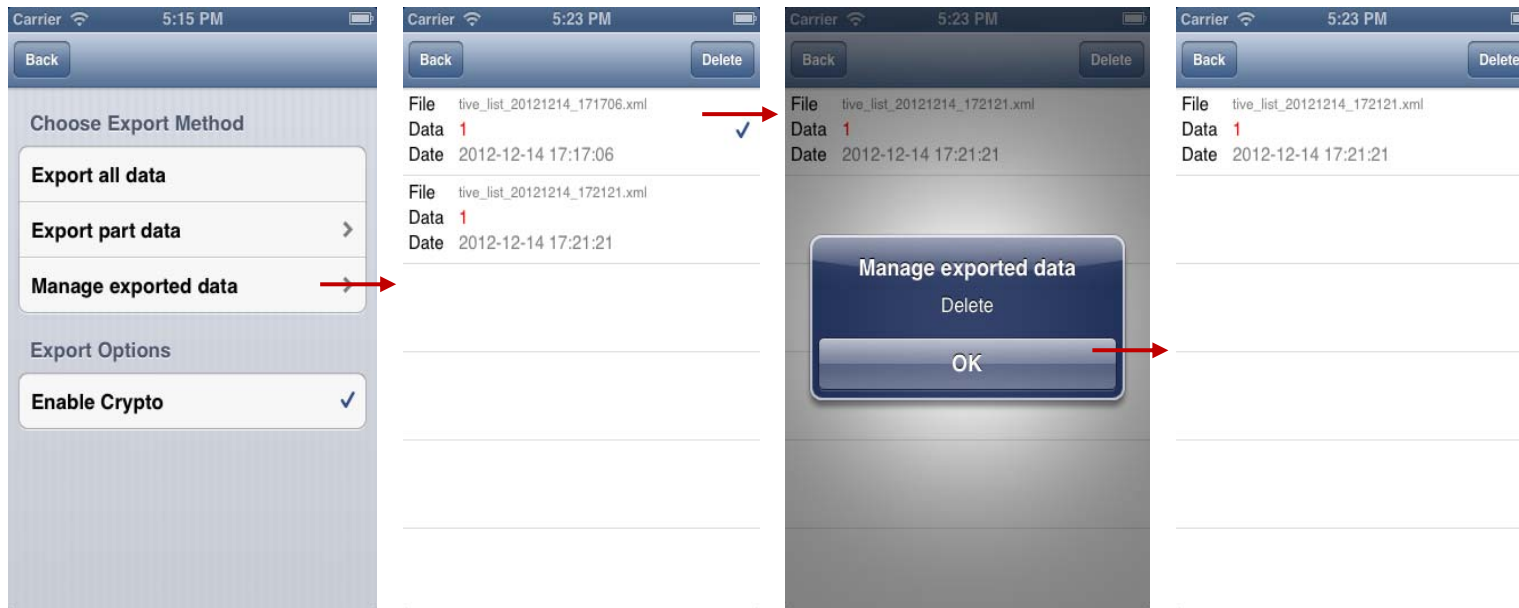
Selected Network Devices' data out of all the registered Network Devices can be exported to the selected e-mail address, and the exported data is automatically saved in the mobile storage.





(3) Manage exported data

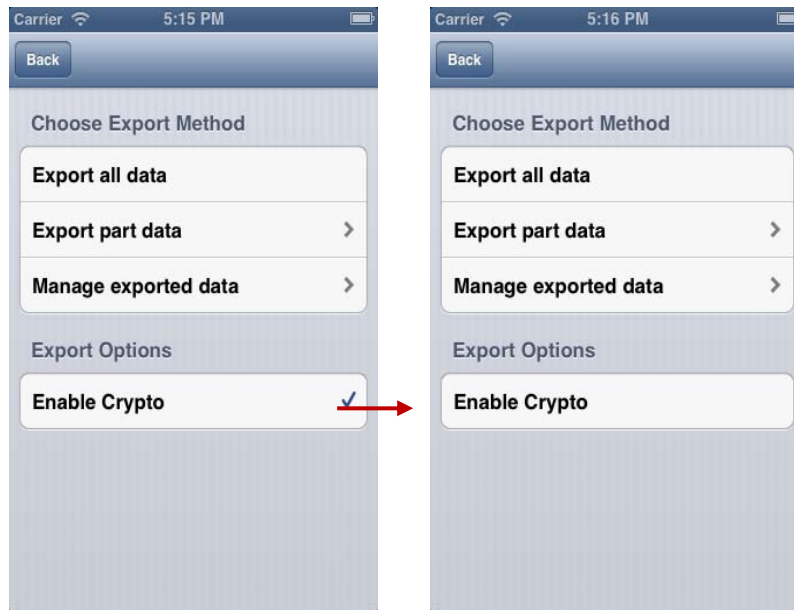
The exported Network Device Data can be deleted selectively.





(4) Enable Crypto

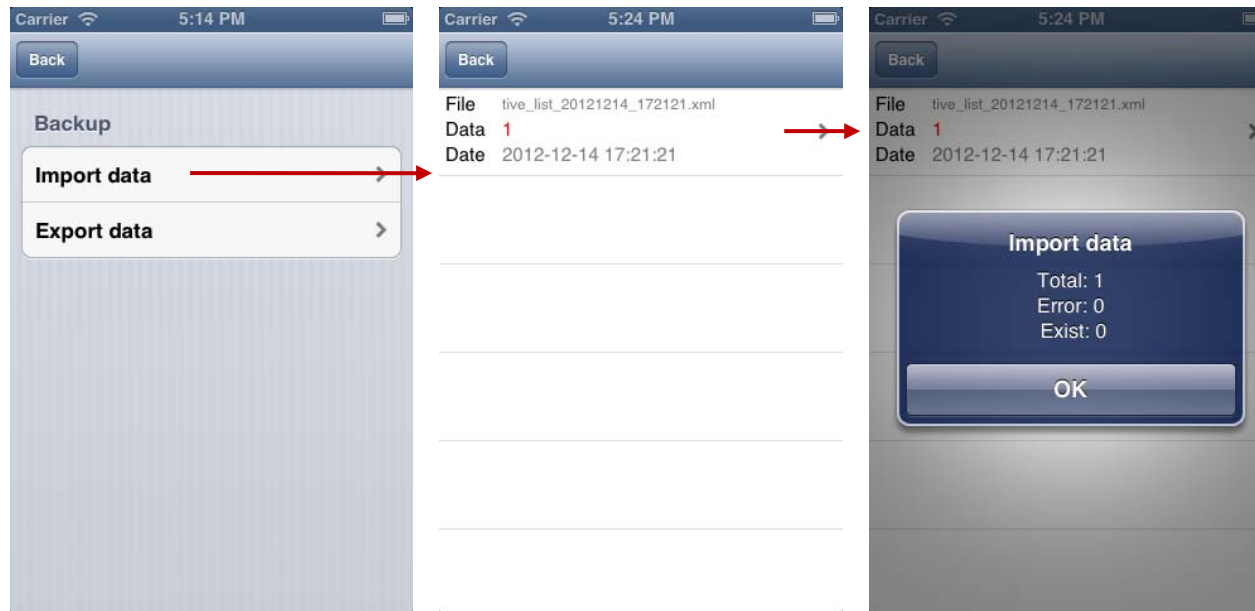
Encryption can be enabled or disabled for the Exported data.





Import

The exported data that has been saved in the mobile storage can be imported to the TIVE.





About

The current TIVE version can be checked

