



ADVANCED
TECHNOLOGY
VIDEO

IP PRODUCT SERIES

>>> 3MP, TRIPLE STREAM, TRUE DAY/NIGHT,
WDR, MOTORIZED LENS, IR,
IP BULLET CAMERA

IP BULLET CAMERA *IPB3TWI*

- > Brilliant Video Quality with 3MP, 2048 x 1536 Resolution
- > Highly Efficient H.264 Video Compression which Drastically Reduces Bandwidth and Storage Requirements
- > Progressive Scanning for Sharper Video Motion Images
- > Motorized 3-9mm Vari-focal Auto-Iris Lens, with Remote Focus
- > Triple Video Stream Simultaneously; H.264 and MJPEG Compression, up to 20-ips @ 1536p and 30-ips @ 1080p Resolution
- > TRUE Day/Night and Digital Wide Dynamic Range Functionality for all Lighting Applications
- > Powerful IR LED Lights for 0Lux Night-Time Operation at 80ft Range
- > Supports a Micro-SD Memory Card Slot for Local, Event Detection Recording
- > Minimum Scene Illumination 0.2Lux Color; 0.0Lux B/W at F1.2, 50IRE with IR On
- > Backlight Compensation, 2D-DNR (Digital Noise Reduction) and Auto White Balance
- > Motion Detection (8 Windows), Privacy Masking (8 Windows) and FTP Image Upload
- > Up to 10 Simultaneous Connections through Remote Monitoring
- > View and Record up to 64 Cameras and View and Manage an Unlimited Number of ATV NVR Units with included ATVision IP Remote Management Software
- > ONVIF Profile S Compliant for Network Video Interoperability
- > IP67 Weatherproof Rated Housing with Built-in heater, Test Monitor Cable and Remote Controller Supplied
- > PoE & 12VDC Power Option Capability



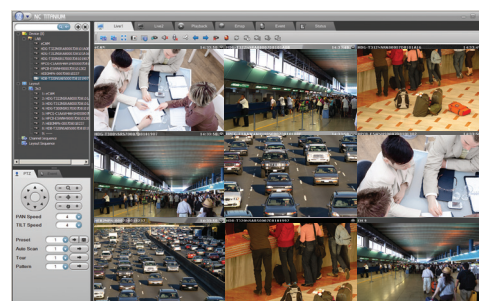
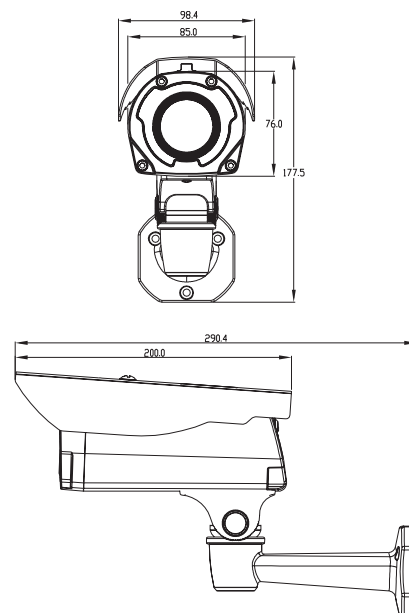
IP BULLET CAMERA IPB3TWI

IP PRODUCT SERIES

SPECIFICATIONS

MODEL	IPB3TWI
CAMERA	Image sensor
	Active Array
	Lens
	Angle of View
	Min. Illumination
	Shutter Speed
NETWORK	IR LED's
	Video Compression
	Video Resolutions
	Frame Rate
	Video Streaming
	Protocol
	Security
	Remote Access
	Max. Connection
	Compatible 3rd Party VMS
	Alarm Triggers
	Alarm Events
	Wide Dynamic Range
	Video Buffering
	Motion Detection
	Network Time Synchronization
	Micro-SD Card Recording
GENERAL	Software Reset
	Factory Reset
	Auto Recovery
	Installation Tool
	Upgrade
	Video Output
	Micro-SD Card
	Ethernet
	Operating Temperature
	Operation Humidity
	Power Consumption
	Environmental Rating
	External Dimension (WxHxD)
	Unit Weight
	Conformity Certifications

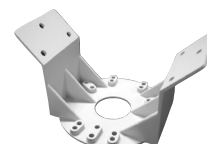
DIMENSIONS



ATVision IP Remote Management Software

ACCESSORIES

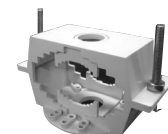
A-CM150 Corner Mount
A-CM151 Pole Mount



A-CM150



Test Monitor Cable and
Remote Controller (Included)



A-CM151

Minimum System Requirements for ATVision IP Software

- Operating System: Microsoft Windows 7 (or 8) Professional/Enterprise/Ultimate
- CPU: Intel Core i7; RAM: 4GB; Ethernet Connection: 1Gbps
- Graphics Card: Gaming Rated, with 1GB at 1080p for Single Monitor; 2GB at 1080p for Multiple Monitors
- HDD's: 7200RPM and 64MB cache; 1 separate HDD for Operating System and Software; and 1 (2TB) HDD for Recording (refer to IP storage calculator)