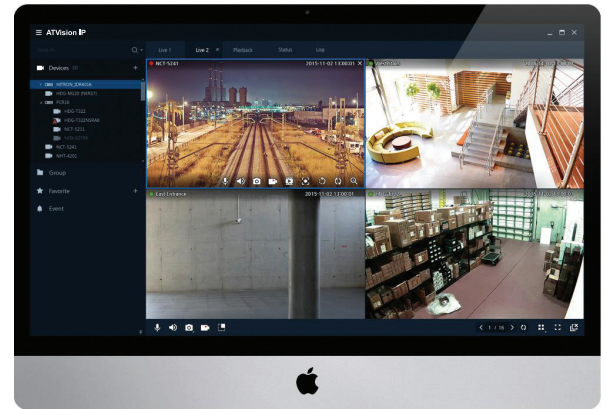




>>>ATVision IP CLIENT SOFTWARE FOR WINDOWS & MAC



ATVision IP Client

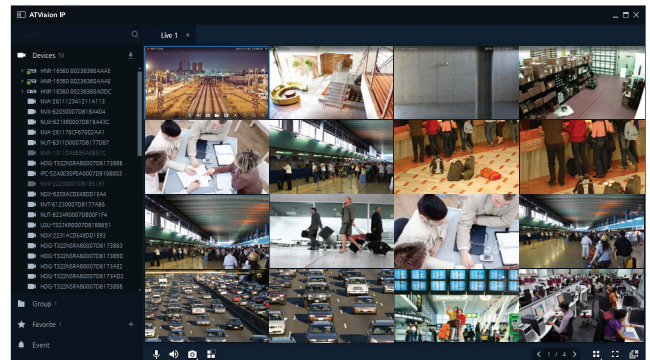
VMS CLIENT SOFTWARE



- > Powerful and Intelligent Video Management Client Software
- > Open Architecture with Windows and Mac Operating Systems Compatibility
- > Unique and Powerful User Interface with Intuitive Ease of use for all User Levels
- > Customizable Layouts Defined by User
- > Real Time Event Monitoring and Device Status
- > Smart Discovery of all Devices
- > Maximum 4k Resolution Display
- > Complete End-to-End Video Solution with Analog or Digital Devices with Unified Configuration and Viewing Capabilities
- > Lifetime Upgrades are included with no Licensing or Annual Maintenance Fees
- > Scalable from one to Thousands of Devices with Consistent and Seamless Transition
- > Dual Stream Support
- > Easy PTZ and Alarm Controls
- > Useful Toolbars for Easy Control of Features such as Digital Zoom, Audio, Image Rotation, Snapshot and others
- > Multiple User and Authority Management Levels
- > ONVIF compliant for Network Video Interoperability

SPECIFICATIONS

APPLICATION		ATVision IP Client
L I V E	View Modes	Live1, Live2, Live3, Live4, Emap, Quick View
	Split Modes	4:3 mode (1, 4, 9, 16, 25, 36, 49, 64), Custom Mode
	Digital Zoom	Yes
	PTZ	PTZ Control on Screen
	Audio/Mic	Yes
	Image Rotation	Yes
	Screen Exchange	Yes
	Snapshot Mode	Manual Save
	Snapshot Format	BMP, JPEG
	Aspect Ratio	Yes; selectable
	Instant Playback	Yes
Event Notification	Yes; local display	
P L A Y B A C K	View Modes	Playback1, Playback2
	Channels	64(each)
	Date Time Search	Yes
	Event Search	Yes
	Bookmark Search	Yes
	Time Jump	1Frame ~ 10 Min
	Play Speed	x1.0, x2.0, x3.0, x4.0, x5.0
	Step Playing	Forward/Backward
	Split Modes	4:3 mode (1, 4, 9, 16, 25, 36, 49, 64), Custom Mode
	Export Footage	Yes (Self-Executable/MP4)
	Thumbnail	Yes
Image Rotation	Yes	
Digital Zoom	Yes	
Snapshot Format	BMP, JPEG	
Audio	Yes	
E M A P	Configuration	Include (Camera/Sensor/Manual Trigger/Link)
	Event Notification	Yes
	Popup View	Yes
	Emap Control	Zoom/History List/Fit Screen
	Mini Map	Yes
F U N C T I O N S	User Emap Image	Yes (Camera/Sensor/Manual Trigger/Link)
	Real-time Event Check	Yes
	Quick View	Yes, (Live, Instant Playback)
	Favorite	Yes
	System Lock/Unlock	Yes
	Automatic Login	Yes
	OSD Control	Yes, (Record Status / DateTime / Device Name)
	User Management	Yes
	Authority Level	Administrator/User
	User Assignment	Yes
	Language	Korean, English, Italian, Japanese
Device Remote Setup	Yes, Link device web page	
Device Searching Query	Yes	
Device Discovery	Yes	
Full Screen Mode	2 Stages (Full Screen with/without Toolbar)	
Device Status View	Yes	
Log	Yes, (System, Device, User)	



ATVision IP Client

Minimum System Requirements for ATVision IP Software

- Operating System: Microsoft Windows 7 or Apple Mac 10.10
- CPU: Intel Core i5; RAM: 4GB; Ethernet Connection: 100Mbps
- Graphics Card: Gaming Rated, with 2GB at 1080p resolution; 4GB at 4k resolution